



EVERY DAY MADE BETTER®





YOUR DAILY ROUTINE

With Hot Spring® Spas, every day is a chance to start fresh, with heat that awakens, crystal clear water that invites, and innovation that you can feel — inspiring you to do more, experience more, and live more.

At the end of the day, we will help you get ready for what is next.

UNLEASH YOUR BEST SELF.™



Get Immersed

Why Hot Spring Spas _____ 4

Smarter, Cleaner, Simpler, Better Water _____ 10

Spa Collections _____ 12

Necessories™ _____ 34

The Absolute Best Hot Tub Ownership Experience™ _____ 38

Specifications _____ 40

Warranty _____ 46

Collection Comparison _____ 47

EVERY DAY
MADE BETTER®

SINCE 1977



With over four decades of experience and almost two million hot tubs sold, Hot Spring® Spas has earned its place as the industry leader by providing customers with the Absolute Best Hot Tub Ownership Experience™, through innovation, uncompromising quality, and a focus on wellness and vitality.

INNOVATION IS AT OUR CORE

Since 1977, when Hot Spring Spas introduced the first fully insulated hot tub with underwater lighting and top-loading filters, we have continued to raise the bar with breakthrough technologies like Moto-Massage®, the world's first moving hydrotherapy jet, and the FreshWater® Salt System, the worry-free way to keep spa water clean, fresh and natural-feeling. Our newest innovation, FreshWater IQ, applies cutting-edge technology to make water care easier than ever.



WELLNESS, REDEFINED

Wellness is at the core of everything we do. Our hot tubs deliver benefits that extend beyond relaxation to provide well-being, stress relief, and vitality. Enjoy the soothing warmth and hydromassage, alone or with friends and family, for a healthier, happier you.



QUALITY YOU CAN COUNT ON

Every Hot Spring spa is engineered to provide relaxation and vitality, now, and for decades to come. Experience the legendary massage, easy water care, leading energy efficiency, and unmatched customer care that has made us the world's best-selling hot tub brand.



UNLEASH YOUR BEST SELF

We believe in the power of warm water and massaging jets to help you feel great, sleep well, and stay active. Making a warm soak part of your daily routine provides vitality to Unleash Your Best Self™, at work, at home — everywhere!



ENGINEERED TO KEEP YOU MOVING

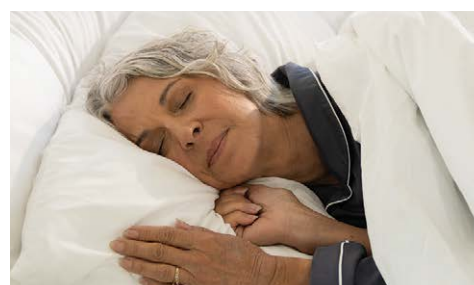
Thoughtfully placed jets target specific muscle groups from neck and shoulders to back, calves, wrists, and feet. Hot Spring® spas deliver a winning combination of buoyancy, heat, and hydromassage to speed up muscle recovery and boost performance during exercise and everyday activities. Warm water massage increases blood flow, improving flexibility, and releasing endorphins that can help reduce pain.

SLEEP WELL & WAKE UP ENERGISED

Relaxing in a hot tub in the evening helps you wind down and de-stress. It can also help physically prepare you for sleep by elevating your body temperature, releasing melatonin, and calming brain activity so you can enjoy a good night's rest naturally and awaken refreshed!

BETTER CONNECTION

Spending distraction-free time in a hot tub invites you to connect on a deeper level with the people who matter most in your life. The benefits flow well beyond just your time in the water, they fill your life with moments that fuel your best relationships.



THE HOT SPRING ADVANTAGES



Legendary Massage

Smooth, ergonomic seating conforms to your body, perfectly positioning you for maximum stress relief. A variety of jets, including the patented Moto-Massage® DX moving jet, are strategically placed to target muscle groups from neck and shoulders to back, calves, wrists, and feet.

Personalised controls further enhance your experience. The Comfort Control™ System lets you fine-tune the mix of air and water, while the SmartJet™ System lets you customise water flow to different jet groups and seats.

Worry-Free Water Care

Your best hot tub experience begins with pure, crystal-clear water that looks and smells fresh, each and every time.

From innovative, low-maintenance filtration that effectively removes impurities to accessories that reduce contaminants in your fill water, we have simplified water care so you can spend more time enjoying your spa, and less time maintaining it.

The ground-breaking FreshWater® IQ System regularly tests your spa water and displays clear instructions to simplify water care maintenance. It combines the power of salt and the revolutionary technology of our Smart Monitoring System so you can enjoy clean, natural-feeling water and fewer water changes.



Leading Energy Efficiency

Every component of our Energy Smart™ System is designed to work together to ensure your spa is always hot and ready — while keeping energy costs low.

With features like high-density insulation that locks in heat, our SilentFlo 5000™ Circulation Pump that uses less energy than a 40-watt light bulb and custom-fit WeatherPro™ covers with an exclusive hinge seal, all Hot Spring® spa models meet or exceed stringent California Energy Commission (CEC) and APSP 14 energy efficiency standards for portable spas.

Estimated Energy Use of the Aria™ Model

City	Temp (°C)	Factory-Standby (kWh/Week ¹)	Usage (kWh/Week ²)
Warsaw	8.5	50.62	56.96
Brussels	10.5	46.93	53.25
Madrid	15	38.64	44.90
Lisbon	17.5	34.03	40.26

¹ Assumes standby-only use for one week, maintaining a water temperature of 38 °C.

² Assumes four days of use and three days with standby-only operation for one week, maintaining a water temperature of 38 °C. "Usage" is defined as a 20-minute session in the hot tub — 10 minutes with all jets on and 10 minutes without jets.

Testing was performed in October 2022 in a UL-certified chamber per the ANSI/APSP/ICC-14 2019.

Individual energy consumption will vary depending on your specific model, set water temperature, consumer usage patterns, and environmental ambient conditions.

LIQUID JUST GOT SMARTER

Experience FreshWater® IQ, one of the most intelligent salt water systems on the planet.

FreshWater IQ is a smart, in-line water care system that regularly tests your spa water and displays clear instructions to help you maintain clean, natural-feeling water. Now you can tell at a glance when chemicals are needed, taking the guesswork out of keeping your spa water balanced and ready to enjoy.



freshwater® IQ

Smarter

WE PUT THE IQ IN LIQUID

Our patented smart monitoring technology, found only in the FreshWater IQ System, regularly tests your water every hour with more accuracy than test strips, and provides clear, on-screen instructions when adjustments are needed. With a glance at your spa's control panel, you will see what is needed to keep your spa water fresh, balanced, and ready to enjoy.

Cleaner

BETTER WATER. FEWER ADDITIVES.

FreshWater IQ uses the FreshWater Salt System to generate the right amount of chlorine. With fewer chemicals, water feels softer and gentler on eyes and skin, and can stay clean and fresh up to a full year*, conserving water and saving money. The FreshWater Salt System works with our proprietary 100% no-bypass filtration system to help you experience the best spa water possible.

Simpler

FINALLY, WATER CARE MADE EASY

Take the guesswork out of water care. Easy-to-follow on-screen recommendations help you maintain clean, natural-feeling water.

Better

ONE OF THE MOST COMPREHENSIVE WATER CARE SYSTEMS AVAILABLE

Fully integrated and easy-to-use, FreshWater IQ helps you keep your spa water clean, balanced, and natural-feeling for The Absolute Best Hot Tub Ownership Experience™.



*Many factors affect the life of spa water, such as bather load and water chemistry. When these factors are accounted for and the spa is properly maintained, the FreshWater Salt System will keep water clean and clear for up to a full year.

CHOOSE YOUR SPA

With three distinct Collections and a wide range of models, sizes, and colours, there is a Hot Spring® spa that fits you and your space.



HIGHLIFE® COLLECTION

Our best to unleash your best. Legendary massage, leading energy efficiency, and crystal clear water for the ultimate hydrotherapy experience.



LIMELIGHT® COLLECTION

Bring your hot tub experience to new levels with the perfect balance of form, function, and value.



HOT SPOT® COLLECTION

The quality, innovation, and performance you expect from a Hot Spring spa, priced to fit your budget.



HIGHLIFE COLLECTION

Our Best. To Unleash Your Best.

For those who expect the most out of life, the Highlife® Collection is everything a hot tub can be. Exceptionally designed. Intentionally engineered. Generously appointed. It is our very best.





Cabinet: Blackwood
Shell: Alpine White



Cabinet: Java
Shell: Alpine White

HIGHLIFE COLLECTION

LEGENDARY MASSAGE



BACK MASSAGE LIKE NO OTHER

Our very best spas feature our most legendary innovation — Moto-Massage® DX jet. Patented moving jets provide powerful water streams that sweep up and down your back for a massage like no other.



PERFECT POSITIONING

Sculpted seats cradle your body's contours in a natural position to help relieve pressure and deliver a better spa experience. Each jet is perfectly and intentionally positioned to target specific muscles, resulting in a distinctive massage from your neck to your shoulders, back, wrists, calves, and feet.



PERSONALISED CONTROL

Simply adjust the jet face with the Comfort Control™ System to personalise each soak with a powerful massage or a soft touch. Customise the waterflow to different jet groups or seats throughout the spa with the SmartJet™ System.

EASY WATER CARE



SMARTER. CLEANER. SIMPLER. BETTER.

Available on all Highlife® Collection spas: FreshWater® IQ, the smart, in-line water care system. FreshWater IQ regularly tests your spa water and displays clear instructions to help you maintain clean, natural-feeling water. At a glance, you can tell when chemicals are needed, taking the guesswork out of keeping your spa water balanced and ready to enjoy.



100% CLEAN, 100% OF THE TIME

All water in a Highlife Collection spa is filtered 100% of the time, meaning every drop of water passes through filters, even when you are soaking with the jets on.

The key is our proprietary no-bypass filtration system paired with our exclusive high-flow Tri-X® filters featuring 3D technology that provides a more effective filtration area than traditional paper filters of the same size to filter significantly more water.

Every drop of water is cleaned every time it moves, no exceptions. You simply will not find cleaner water in any other spa.

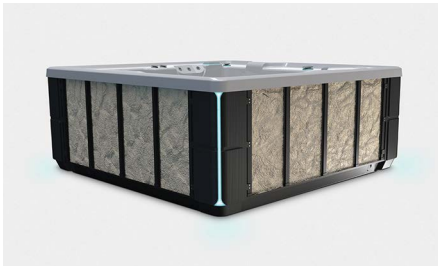


HIGHLIFE COLLECTION

ENERGY SMART™ SYSTEM

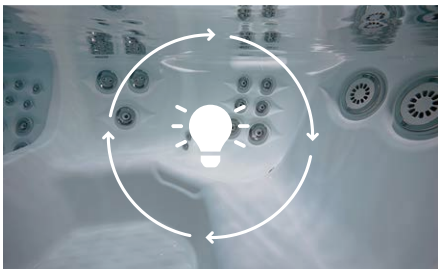
Keeps Spa Water Hot and Energy Bills Low

Through a combination of innovations, Highlife® Collection spas offer the very best in energy-saving design so that your spa will be hot and ready when you are.



ENHANCED ENERGY EFFICIENCY

Built for durability and long life, each Highlife Collection spa features a polymer structure, multiple layers of high density foam insulation, and an insulated base pan, eliminating gaps and voids while locking in heat and maximising energy efficiency.



DEDICATED CIRCULATION PUMP

The SilentFlo 5000™ Circulation Pump is a dedicated pump that continuously circulates spa water 24 hours a day, while using less energy than a 40-watt light bulb. This eliminates the need to rely on high-powered jet pumps to circulate water, reducing energy costs and wear.



LOGO LIGHT INDICATOR

Be confident your spa is hot and ready before you even step outside with the Ready Indicator Light in the Hot Spring® logo. It also doubles as a valuable diagnostic tool, letting you know when your spa needs attention.

STRIKINGLY BEAUTIFUL

**Bold, Yet Elegant. Fresh, Yet Timeless.
Graceful, Yet Powerful.**

The Highlife Collection redefines how a hot tub looks. Elegantly contoured corners reveal accent lights that beckon you closer. Stainless steel and brushed metal finishes add richness and refinement. Clean lines, elegant appointments, and durable materials all work together in harmony to create a unique look that both inspires and endures.

Cabinet: Linen
Shell: Alpine White



Cabinet: Blackwood
Shell: Platinum



HIGHLIFE® COLLECTION



GRANDEE™

7 Seats
49 Jets
254 × 231 × 97 cm



ENVOY™

5 Seats
55 Jets
254 × 231 × 97 cm



ARIA™

5 Seats
42 Jets
221 × 221 × 91 cm



JETSETTER™ LX

3 Seats
30 Jets
213 × 173 × 84 cm



JETSETTER™

3 Seats
22 Jets
213 × 173 × 84 cm



VISUALISE THESE SPAS IN YOUR SPACE

Download the free Virtual View™ AR app and use augmented reality to see how a Hot Spring® spa can transform your space.





VANGUARD™

6 Seats
42 Jets
221 × 221 × 91 cm



SOVEREIGN™

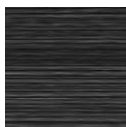
5 Seats
32 Jets
203 × 236 × 84 cm



PRODIGY™

5 Seats
28 Jets
213 × 198 × 84 cm

CABINETS*



Blackwood



Java



Charcoal

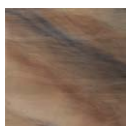


Linen



Brushed Nickel

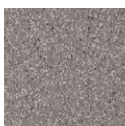
SHELLS*



Tuscan Sun



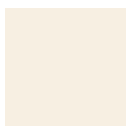
Platinum



Pebble



Ice Grey



Ivory

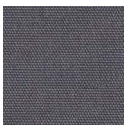


Alpine White

COVERS*



Black



Grey

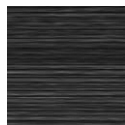


Shadow

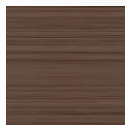


Storm

STEPS*



Blackwood



Java



Charcoal



Linen



COMBINATION OPTIONS

Cabinet	Blackwood	Java	Charcoal	Linen	Brushed Nickel
Shell	Alpine White Ice Grey Platinum	Alpine White Ice Grey Ivory Tuscan Sun Pebble	Alpine White Ice Grey Platinum Tuscan Sun Pebble	Alpine White Ivory Tuscan Sun Pebble	Alpine White Ice Grey Platinum
Cover	Black	Storm	Grey	Shadow	Black

Actual colours and products may vary from print representation. See dealer to verify.

LIMELIGHT COLLECTION

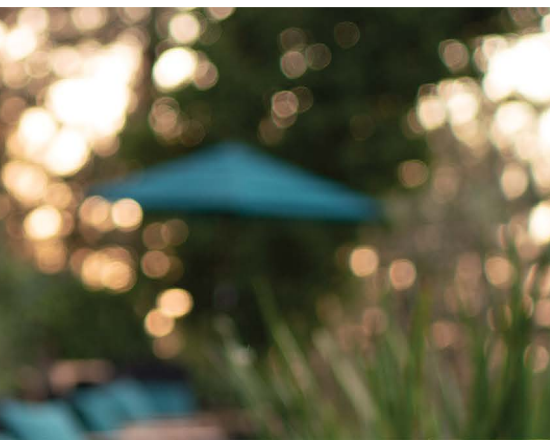
Advanced Design and Features. A Cut Above.

Featuring fresh, clean lines, mood lighting, and sleek corner accents, Limelight® Collection spas stand out from the crowd. Best-in-class features and a legendary Hot Spring® experience make these spas a cut above the rest.





Cabinet: Espresso
Shell: Alpine White



Cabinet: Coastal Grey
Shell: Ice Grey

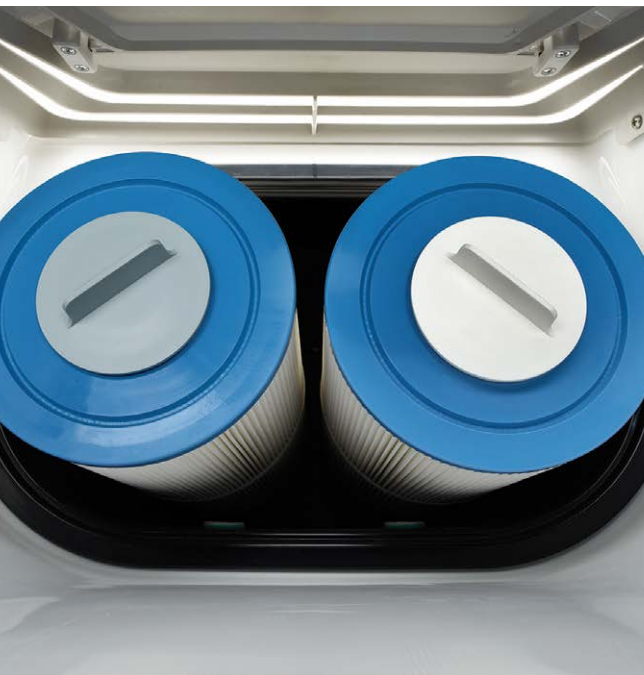
LIMELIGHT COLLECTION



Personalised Massage

Thoughtfully placed jets target specific muscle groups, from your neck to your shoulders, back, calves, wrists, and feet. In Limelight® Collection spas, you have a variety of choices for a complete, full-body massage in sculpted seats that position your body to relieve stress and keep you in place.

Our Comfort Control™ System lets you adjust intensity, while our SmartJet™ System directs water flow to specific jet groups for a truly personalised massage experience.



Dual-Action Filtration

Our unique two-filter design provides for more effective, constant filtration. One filter is dedicated to the circulation pump. The other is dedicated to the jet pumps to clean water when the jets are running. Working together, these two filters provide more total effective filtration area to keep water cleaner with less maintenance.

Energy Efficiency Elevated

Exclusive FiberCor® insulation fills the cabinet completely to a density four times greater than the 8 kg/m³ foam used in most spas on the market. Combined with Energy Smart™ features like the SilentFlo 5000™ Circulation Pump, and the No-Fault® heater, Limelight Collection spas keep water hot and energy costs low.



See Things in a Whole New Light

Limelight Collection spas feature our highest count of lights for a stylish soak. The interior lighting system features multiple points of light placed to accent the contours of the spa shell. Two exterior LED light bars integrate with the front corners of the spa, creating a uniquely elegant look that is unlike any other. Match the colour to your mood by selecting the hue and brightness of your choice or cycle through all six vibrant choices.



READY WHEN YOU ARE

You will always know when your spa is ready — even from a distance. A colour-coded Ready Indicator Light shows at a glance when your water is at the set temperature. The light will indicate if your spa needs maintenance, a filter change, or service.



LIMELIGHT® COLLECTION



PRISM™

7 Seats
73 Jets
279 × 231 × 97 cm



PULSE™

7 Seats
49 Jets
226 × 226 × 97 cm



FLAIR™

6 Seats
43 Jets
213 × 213 × 91 cm



FLASH™

7 Seats
41 Jets
213 × 213 × 91 cm



BEAM™

4 Seats
19 Jets
203 × 203 × 84 cm



STROBE™

4 Seats
23 Jets
208 × 196 × 84 cm



VISUALISE THESE SPAS IN YOUR SPACE

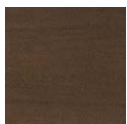
Download the free Virtual View™ AR app and use augmented reality to see how a Hot Spring® spa can transform your space.



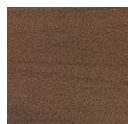


Cabinet: Sable
Shell: Alpine White

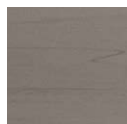
CABINETS



Espresso

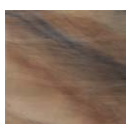


Sable



Coastal
Grey

SHELLS



Tuscan Sun



Platinum



Desert



Ice Grey



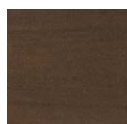
Alpine White

COVERS

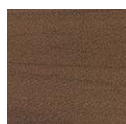


Storm

STEPS



Espresso



Sable



Coastal
Grey



COMBINATION OPTIONS

Cabinet	Espresso	Sable	Coastal Grey
Shell	Alpine White	Alpine White	Alpine White
	Ice Grey	Ice Grey	Ice Grey
	Desert	Desert	Desert
	Platinum	Platinum	Platinum
	Tuscan Sun	Tuscan Sun	Tuscan Sun
Cover	Storm	Storm	Storm

Actual colours and products may vary from print representation. See dealer to verify.

HOT SPOT COLLECTION

**Quality, Performance, and Value.
Maximise Your Everyday.**

Eye-catching design, unique massage, and trusted quality from the industry leader. Hot Spot® Collection spas help you maximise every day for years to come.





Cabinet: Storm
Shell: Alpine White



Cabinet: Havana
Shell: Alpine White

HOT SPOT COLLECTION



Legacy of Legendary Massage

Experience the complete massage you expect from a Hot Spring® spa in the Hot Spot® Collection. A variety of jet types, powered by our reliable WaveMaster® pump, work together with personalised control to deliver a legendary massage.

The SX and TX models feature the exclusive, revolutionary Moto-Massage® moving jet with a warm stream of water that sweeps up and down the length of your back for a truly unparalleled hydromassage experience.



Easy Water Care

The simpler, cleaner, better way to hot tub. The FreshWater® Salt System is a revolution in water care. Water is sanitised with a titanium cartridge that automatically generates chlorine from salt for soft, natural-feeling water without harsh odours, itchy skin, or irritated eyes. This breakthrough technology is the simple way to keep your hot tub water clean and feeling soft for up to a full year.*



Energy Efficiency

Keeping water hot and energy costs low, each Hot Spot Collection spa features FiberCor® insulation, completely filling the cabinet to a density four times greater than the 8 kg/m³ foam used in most spas on the market. Paired with custom-fit WeatherPro™ covers with an exclusive hinge seal, you will soak with confidence knowing your Hot Spot Collection spa meets or exceeds stringent California Energy Commission (CEC) and APSP 14 energy efficiency standards for portable spas.

*Many factors affect the life of spa water, such as bather load and water chemistry. When spa water is properly maintained considering these factors, a 3-pack of FreshWater Salt System cartridges will keep water clean and clear for up to a full year.



EYE-CATCHING DESIGN

Each spa creates a dynamic garden focal point with distinctive design details. Subtly embossed cabinets give the look of natural materials yet provide the durability of advanced composites. Choose between three stunning cabinet colours that can be combined with a variety of shell finishes to create a look that complements your home.

Details Deliver a Difference



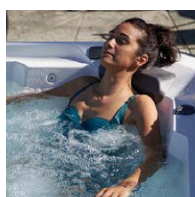
Multi-colour LED lights inside and out* accentuate the design of your spa while setting the mood with a single colour or revolving display.



Sculpted seating contours your body and integrated pillows cradle your head and neck to create a comfortable soaking experience.



Convenient floor drain makes scheduled water changes a breeze.



Backed by a decades-long reputation for outstanding quality and value, you can count on years of enjoyment and reliability with your Hot Spot Collection hot tub.



The large bar top offers space to place your favourite beverage, phone, or other hot tubbing accessory within reach throughout your soak.

*Exterior lighting not available on SX and TX models.

HOT SPOT® COLLECTION



RHYTHM™

7 Seats
40 Jets
213 × 213 × 91 cm



RELAY™

6 Seats
40 Jets
213 × 213 × 91 cm



PROPEL™

5 Seats
24 Jets
208 × 208 × 84 cm



STRIDE™

3 Seats
20 Jets
213 × 165 × 74 cm



SX

3 Seats
18 Jets
183 × 196 × 84 cm



TX

2 Seats
11 Jets
183 × 183 × 74 cm



VISUALISE THESE SPAS IN YOUR SPACE

Download the free Virtual View™ AR app and use augmented reality to see how a Hot Spring® spa can transform your space.





Cabinet: Havana
Shell: Alpine White

CABINETS



Havana

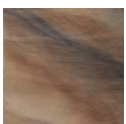


Storm

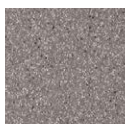


Almond

SHELLS



Tuscan Sun



Pebble



Pearl

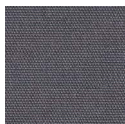


Alpine White

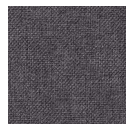
COVERS



Black

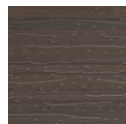


Grey



Chestnut

STEPS



Havana



Storm



Almond



COMBINATION OPTIONS

Cabinet	Havana	Storm	Almond
Shell	Alpine White	Alpine White	Alpine White
	Pearl	Pearl	Pearl
	Pebble	Pebble	Pebble
	Tuscan Sun	Tuscan Sun	Tuscan Sun
Cover	Black	Grey	Chestnut

Actual colours and products may vary from print representation. See dealer to verify.

NECESSARIES™

Upgrade your hot tub experience with high-quality accessories exclusively designed for your Hot Spring® spa.



WeatherPro Covers

Available in contemporary shades to complement any home and outdoor space, WeatherPro™ covers feature durable, fade-resistant materials that provide superior resistance to the elements, while meeting the rigorous energy standards set by the California Energy Commission (CEC) for portable spas. These custom-fit covers lock in heat to save energy and ensure that your spa stays warm and ready for your next soak.



Cover Lifters

Our patented cover lifter systems make opening and closing the spa cover simple, helping maintain your hot tub, extending the life of your cover, and, most importantly, making it easier for you to enjoy your spa every day.



COVERCRADLE

For the ultimate in ease, this robust system offers an ultra-smooth gliding mechanism and the power of dual pneumatic springs to support covers on even our largest spas.

COVERCRADLE II

The CoverCradle™ II uses a single pneumatic spring, making it easy to lift lighter covers on smaller spas.

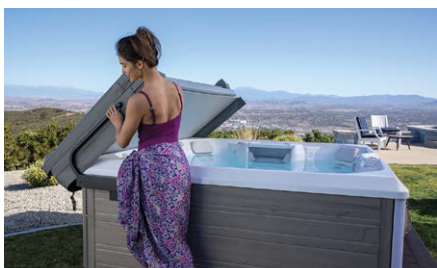
Each requires 61 cm minimum clearance.



UPRITE

Ideal for tight spaces and recessed spa installations, the UpRite™ cover lifter also provides an element of privacy by holding your folded cover in a vertical position.

Requires just 18 cm minimum clearance.



LIFT 'N GLIDE

The Lift 'n Glide™ is easy to operate — simply lift the cover, glide it back, and enjoy your soak.

Requires 36 cm minimum clearance.



Spa Side Enhancements

Thoughtful spa side additions help elevate your hot tubbing experience.

UMBRELLA

Shade your spa with the 360° rotatable spa side umbrella, featuring a 3 metre diameter canopy.

TOWEL TREE

Keep your towel within reach on the stylish and easy-to-assemble aluminum towel tree.

HANDRAIL

Safely enter and exit your spa with our sturdy handrail that swings to allow access from inside and outside the spa. It also features a battery-powered LED light for added convenience and safety.

Hot Spot® Collection



Limelight® Collection



Highlife® Collection



Steps

Complete your Hot Spring® spa set up with steps that make it easier to get into and out of your hot tub. Our steps are designed to match your Hot Spring spa with coordinating colours and cabinet matching materials.

Technology that Simplifies

CONNECTED SPA KIT & HOT SPRING SPAS APP

Control and monitor your spa from your smartphone with the Hot Spring Spas app. Powered by the Connect Spa Kit, the app allows you to control your spa any time from virtually anywhere. Remotely control spa functions like FreshWater® Salt System, jets, lighting, and more. Have peace of mind knowing what is happening with your spa even when you are not at home. Monitor regular maintenance needs and locate your closest dealer to schedule service. All from your mobile device.

Available on most Hot Spring spa models built after 2014.

The Connected Spa Kit is a remote system that relies on connections of Wi-Fi components between the spa and a home network. The system is for the convenience of the hot tub owner and does not replace regular physical inspection and/or maintenance of the hot tub.



Technology that Enhances

MUSIC OPTIONS

Enjoy audio entertainment with your Hot Spring spa. When you opt for a music-ready spa, you get built-in speakers. You can add a wireless Bluetooth® audio system, which allows you to connect your spa to your home entertainment system and other devices. Kick up your music experience with a subwoofer, too, and you might never leave the water.





THE ABSOLUTE BEST HOT TUB
OWNERSHIP EXPERIENCE

Hot Spring Leads The Way

As the world's best-selling spa brand, Hot Spring® earned its reputation for quality and innovation. But we do not stop there. Our focus is on providing The Absolute Best Hot Tub Ownership Experience™ through unparalleled massage, worry-free water care, energy saving features, and unmatched customer care. With a Hot Spring spa, you can relax today, tomorrow and long after your purchase.

45+ Years of Excellence | Almost 2 million Spas Sold | 70 Countries

The Best Retailer Partners

Our group of authorised Hot Spring dealers provides unparalleled customer care as you shop for, purchase, and enjoy your new hot tub. With sales and service centres located worldwide, we have the most extensive support network in the industry.

A Brand You Can Trust

For more than 45 years, we have built our reputation on quality and have earned TradeCertified™ certification for providing a superior ownership experience every year since the award's inception in 2005.



WatkinsWellness®
Feel good. Live well.

Hot Spring Spas is a brand of Watkins Wellness, the leader in hot tub and aquatic fitness products. Watkins Wellness is part of MASCO Corporation, a Fortune 500 company whose family of quality home products includes:



See what real Hot Spring owners are saying on our website.



HIGHLIFE® COLLECTION

	GRANDEE™	ENVOY™	ARIA™	VANGUARD™
Seat Capacity	7	5	5	6
Dimensions <i>(Subject to Change)</i>	254 × 231 × 97 cm	254 × 231 × 97 cm	221 × 221 × 91 cm	221 × 221 × 91 cm
Jet Count	49	55	42	42
Water Capacity	1,725 litres	1,725 litres	1,400 litres	1,425 litres
Dry Weight	360 kg	355 kg	310 kg	320 kg
Filled Weight	2,645 kg	2,480 kg	2,110 kg	2,225 kg
Shell Colours	Alpine White, Ice Grey, Ivory, Pebble, Platinum, Tuscan Sun	Alpine White, Ice Grey, Ivory, Pebble, Platinum, Tuscan Sun	Alpine White, Ice Grey, Ivory, Pebble, Platinum, Tuscan Sun	Alpine White, Ice Grey, Ivory, Pebble, Platinum, Tuscan Sun
Cabinet Colours	Blackwood, Brushed Nickel, Charcoal, Java, Linen	Blackwood, Brushed Nickel, Charcoal, Java, Linen	Blackwood, Brushed Nickel, Charcoal, Java, Linen	Blackwood, Brushed Nickel, Charcoal, Java, Linen
Cabinet Type	Highlife All-Weather Low Maintenance	Highlife All-Weather Low Maintenance	Highlife All-Weather Low Maintenance	Highlife All-Weather Low Maintenance
Step Type	Highlife Step: Blackwood, Charcoal, Java, Linen	Highlife Step: Blackwood, Charcoal, Java, Linen	Highlife Step: Blackwood, Charcoal, Java, Linen	Highlife Step: Blackwood, Charcoal, Java, Linen
Cover Colours	Black, Grey, Shadow, Storm	Black, Grey, Shadow, Storm	Black, Grey, Shadow, Storm	Black, Grey, Shadow, Storm
Cover Lifters	CoverCradle™, CoverCradle II, Lift 'n Glide™, Uprite™	CoverCradle, CoverCradle II, Lift 'n Glide, Uprite	CoverCradle, CoverCradle II, Lift 'n Glide, Uprite	CoverCradle, CoverCradle II, Lift 'n Glide, Uprite
Bottom Seal	Polymeric Molded Base Pan	Polymeric Molded Base Pan	Polymeric Molded Base Pan	Polymeric Molded Base Pan
Lighting	Luminescence™ Multi-Colour LED with 4 Zone Mood Settings	Luminescence Multi-Colour LED with 4 Zone Mood Settings	Luminescence Multi-Colour LED with 4 Zone Mood Settings	Luminescence Multi-Colour LED with 4 Zone Mood Settings
Logo Light	Hot Spring® Logo Badge Diagnostic Self-Dimming Status Light	Hot Spring Logo Badge Diagnostic Self-Dimming Status Light	Hot Spring Logo Badge Diagnostic Self-Dimming Status Light	Hot Spring Logo Badge Diagnostic Self-Dimming Status Light
Jet Pump 1	WaveMaster® 9000 1-Speed 2.5 HP, Continuous Duty (5.2 HP, Breakdown Torque)	WaveMaster 9000 1-Speed 2.5 HP, Continuous Duty (5.2 HP, Breakdown Torque)	WaveMaster 9000 1-Speed 2.5 HP, Continuous Duty (5.2 HP, Breakdown Torque)	WaveMaster 9000 1-Speed 2.5 HP, Continuous Duty (5.2 HP, Breakdown Torque)
Jet Pump 2	WaveMaster 9200 2-Speed 2.5 HP, Continuous Duty (5.2 HP, Breakdown Torque)	WaveMaster 9200 2-Speed 2.5 HP, Continuous Duty (5.2 HP, Breakdown Torque)	WaveMaster 9200 2-Speed 2.5 HP, Continuous Duty (5.2 HP, Breakdown Torque)	WaveMaster 9200 2-Speed 2.5 HP, Continuous Duty (5.2 HP, Breakdown Torque)
Jets	2 Moto-Massage® DX Jets (2) 2 SoothingStream™ Jets 2 FootStream™ Jets 3 Rotary Hydromassage jets 2 Hydromassage Directional Jets 10 Hydrostream™ Directional Jets 26 Precision™ Directional Jets	2 Moto-Massage DX Jets (2) 2 SoothingStream Jets 5 FootStream Jets 2 Hydromassage Rotary Jets 2 Hydromassage Directional Jets 2 Hydrostream Directional Jets 4 Precision Rotary Jets 30 Precision Directional Jets	2 Moto-Massage DX Jets (2) 2 SoothingStream Jets 4 FootStream Jets 2 Hydromassage Rotary Jets 2 Hydrostream Directional Jets 2 Precision Rotary Jets 26 Precision Directional Jets	2 Moto-Massage DX Jets (2) 2 SoothingStream Jets 2 FootStream Jets 2 Hydromassage Rotary Jets 10 Hydrostream Directional Jets 22 Precision Directional Jets
Controls	IQ 2020™ Colour LCD Touchscreen	IQ 2020 Colour LCD Touchscreen	IQ 2020 Colour LCD Touchscreen	IQ 2020 Colour LCD Touchscreen
Circulation Pump	SilentFlo 5000™ Quiet Continuous Filtration	SilentFlo 5000 Quiet Continuous Filtration	SilentFlo 5000 Quiet Continuous Filtration	SilentFlo 5000 Quiet Continuous Filtration
Heater	No-Fault® 1,500w/230v	No-Fault 1,500w/230v	No-Fault 1,500w/230v	No-Fault 1,500w/230v
Filtration	5 Tri-X™ 6 m² Filters, 30 m² Total Surface Area, Top-Loading, 100% No-Bypass Filtration	5 Tri-X 6 m² Filters, 30 m² Total Surface Area, Top-Loading, 100% No-Bypass Filtration	5 Tri-X 6 m² Filters, 30 m² Total Surface Area, Top-Loading, 100% No-Bypass Filtration	5 Tri-X 6 m² Filters, 30 m² Total Surface Area, Top-Loading, 100% No-Bypass Filtration
Water Care System	FreshWater Salt System Included, Smart Monitoring System Optional	FreshWater Salt System Included, Smart Monitoring System Optional	FreshWater Salt System Included, Smart Monitoring System Optional	FreshWater Salt System Included, Smart Monitoring System Optional
Electrical Requirements	230v/20 amp, 50 Hz	230v/20 amp, 50 Hz	230v/20 amp, 50 Hz	230v/20 amp, 50 Hz
Music System (Optional)	Wireless Audio System with Bluetooth® Technology	Wireless Audio System with Bluetooth Technology	Wireless Audio System with Bluetooth Technology	Wireless Audio System with Bluetooth Technology
Water Features	BellaFontana™ Fountain	BellaFontana Fountain	BellaFontana Fountain	BellaFontana Fountain

	SOVEREIGN™	PRODIGY™	JETSETTER™ LX	JETSETTER™
Seat Capacity	5	5	3	3
Dimensions <i>(Subject to Change)</i>	203 × 236 × 84 cm	213 × 198 × 84 cm	213 × 173 × 84 cm	213 × 173 × 84 cm
Jet Count	32	28	30	22
Water Capacity	1,250 litres	1,025 litres	950 litres	925 litres
Dry Weight	270 kg	260 kg	235 kg	225 kg
Filled Weight	1,920 kg	1,685 kg	1,425 kg	1,390 kg
Shell Colours	Alpine White, Ice Grey, Ivory, Pebble, Platinum, Tuscan Sun	Alpine White, Ice Grey, Ivory, Pebble, Platinum, Tuscan Sun	Alpine White, Ice Grey, Ivory, Pebble, Platinum, Tuscan Sun	Alpine White, Ice Grey, Ivory, Pebble, Platinum, Tuscan Sun
Cabinet Colours	Blackwood, Brushed Nickel, Charcoal, Java, Linen	Blackwood, Brushed Nickel, Charcoal, Java, Linen	Blackwood, Brushed Nickel, Charcoal, Java, Linen	Blackwood, Brushed Nickel, Charcoal, Java, Linen
Cabinet Type	Highlife All-Weather Low Maintenance	Highlife All-Weather Low Maintenance	Highlife All-Weather Low Maintenance	Highlife All-Weather Low Maintenance
Step Type	Highlife Step: Blackwood, Charcoal, Java, Linen	Highlife Step: Blackwood, Charcoal, Java, Linen	Highlife Step: Blackwood, Charcoal, Java, Linen	Highlife Step: Blackwood, Charcoal, Java, Linen
Cover Colours	Black, Grey, Shadow, Storm	Black, Grey, Shadow, Storm	Black, Grey, Shadow, Storm	Black, Grey, Shadow, Storm
Cover Lifters	CoverCradle, CoverCradle II, Lift 'n Glide, Uprite	CoverCradle, CoverCradle II, Lift 'n Glide	CoverCradle, CoverCradle II, Lift 'n Glide, Uprite	CoverCradle, CoverCradle II, Lift 'n Glide, Uprite
Bottom Seal	Polymeric Molded Base Pan	Polymeric Molded Base Pan	Polymeric Molded Base Pan	Polymeric Molded Base Pan
Lighting	Luminescence Multi-Colour LED with 4 Zone Mood Settings	Luminescence Multi-Colour LED with 4 Zone Mood Settings	Luminescence Multi-Colour LED with 4 Zone Mood Settings	Luminescence Multi-Colour LED with 4 Zone Mood Settings
Logo Light	Hot Spring Logo Badge Diagnostic Self-Dimming Status Light	Hot Spring Logo Badge Diagnostic Self-Dimming Status Light	Hot Spring Logo Badge Diagnostic Self-Dimming Status Light	Hot Spring Logo Badge Diagnostic Self-Dimming Status Light
Jet Pump 1	WaveMaster 9200 2-Speed 2.5 HP, Continuous Duty (5.2 HP, Breakdown Torque)	WaveMaster 9200 2-Speed 2.5 HP, Continuous Duty (5.2 HP, Breakdown Torque)	WaveMaster 9000 1-Speed 2.5 HP, Continuous Duty (5.2 HP, Breakdown Torque)	WaveMaster 9000 1-Speed 2.5 HP, Continuous Duty (5.2 HP, Breakdown Torque)
Jet Pump 2	N/A	N/A	N/A	N/A
Jets	1 Moto-Massage DX Jet (2) 2 SoothingStream Jets 3 FootStream Jets 2 Hydromassage Rotary Jets 1 Hydrostream Directional Jets 2 Precision Rotary Jets 20 Precision Directional Jets	1 Moto-Massage DX Jet (2) 2 SoothingStream Jets 1 FootStream Jet 2 Hydromassage Rotary Jets 1 Hydromassage Directional Jet 4 Hydrostream Directional Jets 16 Precision Directional Jets	1 Moto-Massage DX Jet (2) 2 SoothingStream Jets 3 FootStream Jets 1 Hydromassage Rotary Jet 2 Precision Rotary Jets 20 Precision Directional Jets	1 Moto-Massage DX Jet (2) 2 SoothingStream Jets 1 FootStream Jet 1 Hydromassage Rotary Jet 2 Precision Rotary Jets 14 Precision Directional Jets
Controls	IQ 2020 Colour LCD Touchscreen	IQ 2020 Colour LCD Touchscreen	IQ 2020 Colour LCD Touchscreen	IQ 2020 Colour LCD Touchscreen
Circulation Pump	SilentFlo 5000 Quiet Continuous Filtration	SilentFlo 5000 Quiet Continuous Filtration	SilentFlo 5000 Quiet Continuous Filtration	SilentFlo 5000 Quiet Continuous Filtration
Heater	No-Fault 1,500w/230v	No-Fault 1,500w/230v	No-Fault 1,500w/230v	No-Fault 1,500w/230v
Filtration	3 Tri-X 6 m² Filters, 18 m² Total Surface Area, Top-Loading, 100% No-Bypass Filtration	3 Tri-X 6 m² Filters, 18 m² Total Surface Area, Top-Loading, 100% No-Bypass Filtration	3 Tri-X 6 m² Filters, 18 m² Total Surface Area, Top-Loading, 100% No-Bypass Filtration	3 Tri-X 6 m² Filters, 18 m² Total Surface Area, Top-Loading, 100% No-Bypass Filtration
Water Care System	FreshWater Salt System Included, Smart Monitoring System Optional	FreshWater Salt System Included, Smart Monitoring System Optional	FreshWater Salt System Included, Smart Monitoring System Optional	FreshWater Salt System Included, Smart Monitoring System Optional
Electrical Requirements	230v/16 amp, 50 Hz	230v/16 amp, 50 Hz	230v/16 amp, 50 Hz	230v/16 amp, 50 Hz
Music System (Optional)	Wireless Audio System with Bluetooth Technology	Wireless Audio System with Bluetooth Technology	Wireless Audio System with Bluetooth Technology*	Wireless Audio System with Bluetooth Technology*
Water Features	BellaFontana Fountain	BellaFontana Fountain	N/A	N/A

*Subwoofer Not Available

LIMELIGHT® COLLECTION

	PRISM™	PULSE™	FLAIR™
Seat Capacity	7	7	6
Dimensions (Subject to Change)	279 × 231 × 97 cm	226 × 226 × 97 cm	213 × 213 × 91 cm
Jet Count	73	49	43
Water Capacity	1,990 litres	1,685 litres	1,270 litres
Dry Weight	540 kg	460 kg	400 kg
Filled Weight	3,085 kg	2,700 kg	2,140 kg
Shell Colours	Alpine White, Desert, Ice Grey, Platinum, Tuscan Sun	Alpine White, Desert, Ice Grey, Platinum, Tuscan Sun	Alpine White, Desert, Ice Grey, Platinum, Tuscan Sun
Cabinet Colours	Coastal Grey, Espresso, Sable	Coastal Grey, Espresso, Sable	Coastal Grey, Espresso, Sable
Cabinet Type	Everwood™ All-Weather Low-Maintenance	Everwood All-Weather Low-Maintenance	Everwood All-Weather Low-Maintenance
Step Type	Limelight Step: Coastal Grey, Espresso, Sable	Limelight Step: Coastal Grey, Espresso, Sable	Limelight Step: Coastal Grey, Espresso, Sable
Cover Colours	Storm	Storm	Storm
Cover Lifters	CoverCradle™ Included, UpRite™ Compatible	CoverCradle, CoverCradle II, Lift 'n Glide™, UpRite	CoverCradle, CoverCradle II, Lift 'n Glide, UpRite
Bottom Seal	HDPE Bottom Sheet	HDPE Bottom Sheet	HDPE Bottom Sheet
Lighting	Raio™ Multi-Colour LED Interior: 32 Points of Light, Plus Waterfall; Exterior: Front-corner	Raio Multi-Colour LED Interior: 32 Points of Light, Plus Waterfall; Exterior: Front-corner	Raio Multi-Colour LED Interior: 32 Points of Light, Plus Waterfall; Exterior: Front-corner
Logo Light	Hot Spring® Logo Badge Diagnostic Self-Dimming Status Light	Hot Spring Logo Badge Diagnostic Self-Dimming Status Light	Hot Spring Logo Badge Diagnostic Self-Dimming Status Light
Jet Pump 1	WaveMaster® 9200 2-Speed 2.5 HP, Continuous Duty (5.2 HP, Breakdown Torque)	WaveMaster 9200 2-Speed 2.5 HP, Continuous Duty (5.2 HP, Breakdown Torque)	WaveMaster 8200 2-Speed 2.0 HP, Continuous Duty (4.0 HP, Breakdown Torque)
Jet Pump 2	WaveMaster 9000 1-Speed 2.5 HP, Continuous Duty (5.2 HP, Breakdown Torque)	WaveMaster 9000 1-Speed 2.5 HP, Continuous Duty (5.2 HP, Breakdown Torque)	WaveMaster 8000 1-Speed 2.0 HP, Continuous Duty (4.0 HP, Breakdown Torque)
Jet Pump 3	WaveMaster 9000 1-Speed 2.5 HP, Continuous Duty (5.2 HP, Breakdown Torque)	N/A	N/A
Jets	1 FootStream™ XL Jet 1 XL Dual Rotary Jet 2 XL Single Rotary Jets 3 XL Directional Jets 7 Standard Dual Rotary Jets 4 Standard Single Rotary Jets 4 Standard Directional Jets 10 Precision™ Rotary Jets 41 Precision Directional Jets	1 XL Dual Rotary Jet 1 XL Single Rotary Jet 2 XL Directional Jets 4 Standard Single Rotary Jets 2 Standard Directional Jets 4 Precision Rotary Jets 35 Precision Directional Jets	1 XL Dual Rotary Jet 2 XL Single Rotary Jets 1 XL Directional Jet 6 Standard Dual Rotary Jets 2 Standard Directional Jets 31 Precision Directional Jets
Controls	IQ 2020™ Colour LCD	IQ 2020 Colour LCD	IQ 2020 Colour LCD
Circulation Pump	SilentFlo 5000™ Quiet Continuous Filtration	SilentFlo 5000 Quiet Continuous Filtration	SilentFlo 5000 Quiet Continuous Filtration
Heater	No-Fault® 1,500w/230v	No-Fault 1,500w/230v	No-Fault 1,500w/230v
Filtration	2 Polyester 7 m² Filters, 13.9 m² Total Surface Area, Top-Loading	2 Polyester 4.6 m² Filters, 9.3 m² Total Surface Area, Top-Loading	2 Polyester 4.6 m² Filters, 9.3 m² Total Surface Area, Top-Loading
Water Care System	FreshWater Salt System (Optional), Smart Monitoring System (Optional)	FreshWater Salt System (Optional), Smart Monitoring System (Optional)	FreshWater Salt System (Optional), Smart Monitoring System (Optional)
Electrical Requirements	230v/16 + 25 amp, 50 Hz	230v/20 amp, 50 Hz	230v/16 amp, 50 Hz
Music System (Optional)	Wireless Audio System with Bluetooth® Technology	Wireless Audio System with Bluetooth Technology	Wireless Audio System with Bluetooth Technology
Water Features	Vidro™ Waterfall LED Backlit Ribbon	Vidro Waterfall LED Backlit Ribbon	Vidro Waterfall LED Backlit Ribbon

	FLASH™	BEAM™	STROBE™
Seat Capacity	7	4	4
Dimensions <i>(Subject to Change)</i>	213 × 213 × 91 cm	203 × 203 × 84 cm	208 × 196 × 84 cm
Jet Count	41	19	23
Water Capacity	1,365 litres	1,115 litres	1,020 litres
Dry Weight	385 kg	320 kg	375 kg
Filled Weight	2,300 kg	1,750 kg	1,715 kg
Shell Colours	Alpine White, Desert, Ice Grey, Platinum, Tuscan Sun	Alpine White, Desert, Ice Grey, Platinum, Tuscan Sun	Alpine White, Desert, Ice Grey, Platinum, Tuscan Sun
Cabinet Colours	Coastal Grey, Espresso, Sable	Coastal Grey, Espresso, Sable	Coastal Grey, Espresso, Sable
Cabinet Type	Everwood All-Weather Low-Maintenance	Everwood All-Weather Low-Maintenance	Everwood All-Weather Low-Maintenance
Step Type	Limelight Step: Coastal Grey, Espresso, Sable	Limelight Step: Coastal Grey, Espresso, Sable	Limelight Step: Coastal Grey, Espresso, Sable
Cover Colours	Storm	Storm	Storm
Cover Lifters	CoverCradle, CoverCradle II, Lift 'n Glide, UpRite	CoverCradle, CoverCradle II, Lift 'n Glide, UpRite	CoverCradle, CoverCradle II, Lift 'n Glide, UpRite
Bottom Seal	HDPE Bottom Sheet	HDPE Bottom Sheet	HDPE Bottom Sheet
Lighting	Raio Multi-Colour LED Interior: 27 Points of Light, Plus Waterfall; Exterior: Front-corner	Raio Multi-Colour LED Interior: 30 Points of Light, Plus Waterfall; Exterior: Front-corner	Raio Multi-Colour LED Interior: 26 Points of Light, Plus Waterfall; Exterior: Front-corner
Logo Light	Hot Spring Logo Badge Diagnostic Self-Dimming Status Light	Hot Spring Logo Badge Diagnostic Self-Dimming Status Light	Hot Spring Logo Badge Diagnostic Self-Dimming Status Light
Jet Pump 1	WaveMaster 8200 2-Speed 2.0 HP, Continuous Duty (4.0 HP, Breakdown Torque)	WaveMaster 9000 1-Speed 2.5 HP, Continuous Duty (5.2 HP, Breakdown Torque)	WaveMaster 9000 1-Speed 2.5 HP, Continuous Duty (5.2 HP, Breakdown Torque)
Jet Pump 2	WaveMaster 8000 1-Speed 2.0 HP, Continuous Duty (4.0 HP, Breakdown Torque)	N/A	N/A
Jet Pump 3	N/A	N/A	N/A
Jets	1 XL Dual Rotary Jet 3 XL Single Rotary Jets 1 XL Directional Jet 4 Standard Single Rotary Jets 4 Standard Directional Jets 28 Precision Directional Jets	1 XL Directional Jet 2 Standard Single Rotary Jets 2 Standard Directional Jets 14 Precision Directional Jets	1 XL Dual Rotary Jet 1 XL Directional Jet 2 Standard Single Rotary Jets 1 Standard Directional Jets 18 Precision Directional Jets
Controls	IQ 2020 Colour LCD	IQ 2020 Colour LCD	IQ 2020 Colour LCD
Circulation Pump	SilentFlo 5000 Quiet Continuous Filtration	SilentFlo 5000 Quiet Continuous Filtration	SilentFlo 5000 Quiet Continuous Filtration
Heater	No-Fault 1,500w/230v	No-Fault 1,500w/230v	No-Fault 1,500w/230v
Filtration	2 Polyester 4.6 m² Filters, 9.3 m² Total Surface Area, Top-Loading	2 Polyester 4.6 m² Filters, 9.3 m² Total Surface Area, Top-Loading	2 Polyester 4.6 m² Filters, 9.3 m² Total Surface Area, Top-Loading
Water Care System	FreshWater Salt System (Optional), Smart Monitoring System (Optional)	FreshWater Salt System (Optional), Smart Monitoring System (Optional)	FreshWater Salt System (Optional), Smart Monitoring System (Optional)
Electrical Requirements	230v/16 amp, 50 Hz	230v/16 amp, 50 Hz	230v/16 amp, 50 Hz
Music System (Optional)	Wireless Audio System with Bluetooth Technology	Wireless Audio System with Bluetooth Technology	Wireless Audio System with Bluetooth Technology
Water Features	Vidro Waterfall LED Backlit Ribbon	Vidro Waterfall LED Backlit Ribbon	Vidro Waterfall LED Backlit Ribbon

HOT SPOT® COLLECTION

	RHYTHM™	RELAY™	PROPEL™
Seat Capacity	7	6	5
Dimensions <i>(Subject to Change)</i>	213 × 213 × 91 cm	213 × 213 × 91 cm	208 × 208 × 84 cm
Jet Count	40	40	24
Water Capacity	1,250 litres	1,290 litres	1,135 litres
Dry Weight	383 kg	375 kg	350 kg
Filled Weight	2,185 kg	2,140 kg	1,880 kg
Shell Colours	Alpine White, Pebble, Tuscan Sun, White Pearl	Alpine White, Pebble, Tuscan Sun, White Pearl	Alpine White, Pebble, Tuscan Sun, White Pearl
Cabinet Colours	Almond, Havana, Storm	Almond, Havana, Storm	Almond, Havana, Storm
Cabinet Type	Everwood™ All-Weather Low-Maintenance	Everwood All-Weather Low-Maintenance	Everwood All-Weather Low-Maintenance
Step Type	Hot Spot Step: Almond, Havana, Storm	Hot Spot Step: Almond, Havana, Storm	Hot Spot Step: Almond, Havana, Storm
Cover Colours	Black, Chestnut, Grey	Black, Chestnut, Grey	Black, Chestnut, Grey
Cover Lifters	CoverCradle™, CoverCradle II, Lift 'n Glide™, UpRite™	CoverCradle, CoverCradle II, Lift 'n Glide, UpRite	CoverCradle, CoverCradle II, Lift 'n Glide, UpRite
Bottom Seal	HDPE Bottom Sheet	HDPE Bottom Sheet	HDPE Bottom Sheet
Lighting	Multi-Colour LED Interior: 10 Points of Light; Exterior: 4 Corner LED	Multi-Colour LED Interior: 10 Points of Light; Exterior: 4 Corner LED	Multi-Colour LED Interior: 10 Points of Light; Exterior: 4 Corner LED
Logo Light	N/A	N/A	N/A
Jet Pump 1	WaveMaster® 8200 2-Speed 2.0 HP, Continuous Duty (4.0 HP, Breakdown Torque)	WaveMaster 8200 2-Speed 2.0 HP, Continuous Duty (4.0 HP, Breakdown Torque)	WaveMaster 9200 2-Speed 2.5 HP, Continuous Duty (5.2 HP, Breakdown Torque)
Jet Pump 2	WaveMaster 8000 1-Speed 2.0 HP, Continuous Duty (4.0 HP, Breakdown Torque)	WaveMaster 8000 1-Speed 2.0 HP, Continuous Duty (4.0 HP, Breakdown Torque)	N/A
Jets	3 XL Directional Hydromassage Jets 2 XL Rotary Hydromassage Jets 3 Directional Hydromassage Jets 2 Rotary Hydromassage jets 30 Precision™ Directional Jets	3 XL Directional Hydromassage Jets 2 XL Rotary Hydromassage Jets 3 Directional Hydromassage Jets 2 Rotary Hydromassage jets 30 Precision Directional Jets	3 XL Directional Hydromassage Jets 2 Directional Hydromassage Jets 2 Rotary Hydromassage jets 17 Precision Directional Jets
Controls	IQ 2020™ Mono Colour LCD Panel	IQ 2020 Mono Colour LCD Panel	IQ 2020 Mono Colour LCD Panel
Circulation Pump	SilentFlo 5000™ Quiet Continuous Filtration	SilentFlo 5000 Quiet Continuous Filtration	SilentFlo 5000 Quiet Continuous Filtration
Heater	No-Fault® 1,500w/230v	No-Fault 1,500w/230v	No-Fault 1,500w/230v
Filtration	(1) Polyester 6 m² Filter, Top-Loading	(1) Polyester 6 m² Filter, Top-Loading	(1) Polyester 2.8 m² Filter, Top-Loading
Water Care System	FreshWater Salt System (Optional)	FreshWater Salt System (Optional)	FreshWater Salt System (Optional)
Electrical Requirements	230v/20 amp, 50 Hz	230v/20 amp, 50 Hz	230v/16 amp, 50 Hz
Music System (Optional)	Wireless Audio System with Bluetooth® Technology	Wireless Audio System with Bluetooth Technology	Wireless Audio System with Bluetooth Technology
Water Features	Vidro™ Waterfall	Vidro Waterfall	Vidro Waterfall

	STRIDE™	SX	TX
Seat Capacity	3	3	2
Dimensions <i>(Subject to Change)</i>	213 × 165 × 74 cm	183 × 196 × 84 cm	183 × 183 × 74 cm
Jet Count	20	18	11
Water Capacity	850 litres	870 litres	720 litres
Dry Weight	260 kg	295 kg	290 kg
Filled Weight	1,350 kg	1,400 kg	1,165 kg
Shell Colours	Alpine White, Pebble, Tuscan Sun, White Pearl	Alpine White, Pebble, Tuscan Sun, White Pearl	Alpine White, Pebble, Tuscan Sun, White Pearl
Cabinet Colours	Almond, Havana, Storm	Almond, Havana, Storm	Almond, Havana, Storm
Cabinet Type	Everwood All-Weather Low-Maintenance	Everwood All-Weather Low-Maintenance	Everwood All-Weather Low-Maintenance
Step Type	Hot Spot Step: Almond, Havana, Storm	Hot Spot Step: Almond, Havana, Storm	Hot Spot Step: Almond, Havana, Storm
Cover Colours	Black, Chestnut, Grey	Black, Chestnut, Grey	Black, Chestnut, Grey
Cover Lifters	CoverCradle, CoverCradle II, Lift 'n Glide, UpRite	CoverCradle, CoverCradle II, Lift 'n Glide	Lift 'n Glide
Bottom Seal	HDPE Bottom Sheet	HDPE Bottom Sheet	HDPE Bottom Sheet
Lighting	Multi-Colour LED Interior: 6 Points of Light; Exterior: 4 Corner LED	Multi-Colour LED Interior: 6 Points of Light	Multi-Colour LED Interior: 4 Points of Light
Logo Light	N/A	N/A	N/A
Jet Pump 1	WaveMaster 8200 2-Speed 2.0 HP, Continuous Duty (4.0 HP, Breakdown Torque)	WaveMaster 9200 2-Speed 2.5 HP, Continuous Duty (5.2 HP, Breakdown Torque)	Wavemaster 8200 2-Speed 2.0 HP, Continuous Duty (4.0 HP, Breakdown Torque)
Jet Pump 2	N/A	N/A	N/A
Jets	1 XL Directional Hydromassage Jet 1 XL Rotary Hydromassage Jet 3 Directional Hydromassage Jets 1 Rotary Hydromassage Jet 14 Precision Directional Jets	1 Moto-Massage® Jet 1 XL Rotary Hydromassage Jet 16 Precision Directional Jets	1 Moto-Massage Jet 1 Directional Hydromassage Jet 1 Rotary Hydromassage Jet 8 Precision Directional Jets
Controls	IQ 2020 Mono Colour LCD Panel	IQ 2020 Mono Colour LCD Panel	IQ 2020 Mono Colour LCD Panel
Circulation Pump	SilentFlo 5000 Quiet Continuous Filtration	SilentFlo 5000 Quiet Continuous Filtration	SilentFlo 5000 Quiet Continuous Filtration
Heater	No-Fault 1,500w/230v	No-Fault 1,500w/230v	No-Fault 1,500w/230v
Filtration	(1) Polyester 2.8 m² Filter, Top-Loading	(1) Polyester 2.8 m² Filter, Top-Loading	(1) Polyester 2.8 m² Filter, Top-Loading
Water Care System	FreshWater Salt System (Optional)	FreshWater Salt System (Optional)	FreshWater Salt System (Optional)
Electrical Requirements	230v/16 amp, 50 Hz	230v/16 amp, 50 Hz	230v/16 amp, 50 Hz
Music System (Optional)	N/A	N/A	N/A
Water Features	N/A	N/A	N/A

A WARRANTY YOU CAN COUNT ON

We are passionate about making the world's best hot tubs and we stand behind them with robust and comprehensive warranties designed to give you peace of mind. Our warranties are our commitment to you, and we are proud to share them up front and in detail.

www.hotspring.co.uk/owners/warranty/

	Highlife® Collection	Limelight® Collection	Hot Spot® Collection
No-Leak Shell	7 Years	7 Years	5 Years
Shell Surface	7 Years	5 Years	2 Years
Cabinet	5 Years	3 Years	2 Years
No-Leak Plumbing	5 Years	5 Years	2 Years
No-Fault® Heater	5 Years	5 Years	2 Years
Component Warranty	5 Years	5 Years	2 Years
Interior Light Assembly	2 Years	3 Years	2 Years



Compare Spa Collections

Benefit	Features	Highlife® Collection	Limelight® Collection	Hot Spot® Collection
Massage	Moto-Massage® DX	●		
	Moto-Massage			SX & TX
	Comfort Control™	●	●	●
	SmartJet™ System	●	●	
Clean Water	100% No-Bypass Filtration	●		
	Tri-X™ Filters	●		
	Dual-Action Filtration		●	
	FreshWater® Smart Monitoring System	Optional	Optional	
	FreshWater® Salt System	●	Optional	Optional
Energy Efficiency	Multiple Layers of High Density Foam Insulation	●		
	FiberCor® Insulation		●	●
	Polymeric Base Pan and Substructure	●		
	Polyethylene Sealed Bottom		●	●
	SilentFlo 5000™ Circulation Pump	●	●	●
	No-Fault® Heater	●	●	●
	Custom-Fit Insulated Cover	●	●	●
	Meets CEC and APSP Energy Efficiency Standards	●	●	●
Intuitive Control	Colour LCD Touchscreen Control	●		
	Colour LCD Control		●	
	LCD Control			●
	Diagnostic Logo Light	●	●	
Lighting & Entertainment	Customisable LED Zone Lighting	●		
	Multi-Colour LED Lighting	●	●	●
	Exterior Lighting	●	●	All except SX & TX
	Wireless Entertainment	Optional	Optional	Optional except Stride™, SX, TX

Community

Join our community of Hot Spring® spa owners for ideas, perspectives, personal results, and more. Connect with our social channels and immerse yourself in our world.

Visit our website:

hotspring.co.uk



RM-SPAS

Chemin des Rottes 27
1907 Saxon / Valais

E. info@rm-spas.ch
T. +41 27 746 64 00

© 2025 Watkins Wellness, 1280 Park Center Drive, Vista, California 92081, USA. All rights reserved. Specifications, colours, and surface materials subject to change without notice. Not all features available on all products. Printed in EU. Aria, BellaFontana water feature, Beam, Clean Screen, ComfortControl System, CoverCradle, CoolZone, EnergySmart Spa, Envoy, EverFresh, Everwood™ Cabinet, Every Day Made Better, Feel good. Live Well., FiberCor, Flair, Flash, FootStream jet, FreshWater, Grandee, Highlife, Hot Spot, Hot Spring, HotSpring, HydroPulse, HydroStream jet, IQ 2020, I'm a Hot Tubber, Jetsetter, Lift 'n Glide, Limelight, Luminescence LED Light System, Moto-Massage jet, Necessaries, Nobody Backs You Better, No-Fault, Precision jet, Prism, Prodigy, Propel, Pulse, Raio, Relay, Rhythm, Silent Flo 5000, SmartJet System, SoothingStream water feature, Sovereign, Stride, Strobe, The Absolute Best Hot Tub Ownership Experience, Tri-X filter, UpRite, Vanguard, Vanishing Act, Vidro, Vista, Watkins the Home Relaxation Specialists, Watkins Direct, WaveMaster, Watkins Wellness, WeatherPro, Virtual View are trademarks of Watkins Manufacturing Corp. Axor is a registered trademark. Hansgrohe is a registered trademark of Hansgrohe SE. Tylo is a registered trademark. Bluetooth is a registered trademark of the Bluetooth Special Interest Group (SIG). All other marks are property of their respective owners. All 230 V models must be installed by a licensed electrician in accordance with local codes.



We print our brochures on only Forest Stewardship Council (FSC) paper.
Printed in the EU on recycled paper that contains 10% post-consumer waste and is FSC certified. FSC ensures that the paper in our brochures contains fibre from well-managed and responsibly harvested forests. Please pass this catalog on or recycle again.

