



# ENDLESS™ POOLS

## 2025 PRODUCT KNOWLEDGE GUIDE

E-SERIES, X-SERIES, & R-SERIES SWIM SPAS



# TABLE OF CONTENTS

<b>Endless Pools® Fitness Systems Introduction .....</b>	<b>5</b>
<b>Aquatic Fitness.....</b>	<b>6</b>
E-Series Swim Spas .....	7
Hydrodrive™ Technology.....	7
Treadmill .....	8
Hydrodrive™ Technology & Treadmill Operation.....	9
Hydraulic Power Unit .....	10
X-Series Swim Spas.....	12
SwimCross® Technology .....	12
Swim Jet Pumps .....	12
R-Series Swim Spas.....	13
RecSport® Technology.....	13
Swim Jet Pump .....	13
<b>External Design Features .....</b>	<b>14</b>
Cabinet Options.....	14
E-Series.....	14
X-Series .....	15
R-Series.....	15
Corners.....	16
T-Spacers .....	16
<b>Internal Design Features .....</b>	<b>17</b>
Shell Colour Options .....	17
Swim Lane Marker .....	17
Handrails.....	18
Points of Light (P.O.L) .....	18
Waterfall Features .....	19
Hydromassage Jets .....	19
Control Panel and Auxiliary Control Panel Functionality.....	20
<b>Structure .....</b>	<b>21</b>
2 mm Steel Frame.....	21
Wood Frame.....	21
Base Pan Material and functionality.....	21



<b>Energy Efficiency .....</b>	<b>22</b>
Tri-Thermic Barrier System .....	22
Energy usage.....	23
Heating Rate.....	23
Circuit Saver Functionality.....	24
<b>Aftermarket Fitness Accessories and Options .....</b>	<b>25</b>
Sound System .....	25
Endless Pools® Surface Kits.....	25
Exterior LED Lighting.....	26
AquaBike.....	26
Exercise Kit .....	26
Resistance Bands Kit .....	27
Swim Tether Kit .....	27
Floor Mirror .....	27
Pace Display(s) .....	28
CoolZone™ Cooling System .....	28
4-Tier Steps.....	28
Fit@Home™ WiFi Kit and Mobile App .....	29
Gecko® In.Touch 2 WiFi Kit and Mobile App .....	29
<b>Covers &amp; Lifters .....</b>	<b>30</b>
Watkins Covers .....	30
Watkins UpRite™ / ProLift™ IV Lifters.....	30
Watkins CoverCradle™ / ProLift™ III Lifters.....	30
Easy Slider Cover Mounts.....	30
<b>Water Care .....</b>	<b>31</b>
Litres by Model.....	31
UVC + CD Ozone* .....	31
Silver Ion Mineral Cartridge .....	32
Water Quality .....	32
New Ownership Recommendations.....	32
Filter Change/Cleaning Schedule.....	32
Water Conservation.....	33
Water Circulation .....	33
Water Maintenance Recommendations .....	34

\*Please check with local dealer on availability

**Warranty Information..... 35**  
E-Series Swim Spas Warranty Information..... 35  
X-Series Swim Spas Warranty Information..... 36  
R-Series Swim Spas Warranty Information..... 37  
Aftermarket Accessories Warranty Information..... 38  
**Product Specifications ..... 39**  
E-Series E500 ..... 39  
E-Series E550..... 40  
E-Series E700..... 41  
E-Series E2000..... 42  
X-Series X500..... 43  
X-Series X2000 ..... 44  
R-Series R200 ..... 45  
R-Series R220..... 46  
R-Series R500 ..... 47



# Endless™ Pools Introduction

For over three decades, Endless Pools has been known as the leader in the swim-in-place market. Since joining Watkins Wellness® in 2015, Endless Pools has revolutionised the modern "swim spa." Our innovations go beyond the typical to provide customers with a backyard experience unlike any other.

Our exclusive Hydrodrive™ swim technology and distinct underwater treadmill combine with groundbreaking style, quality, and functionality to truly set Endless Pools Swim Spas apart. When your customer chooses an Endless Pools Swim Spa, it will meet their needs and enhance their lives for many years to come.

Three product categories provide customers with nine models, appealing to customers interested in family recreation to elite athletes in training.

## **E-Series Swim Spas (E500, E550, E700, E2000)**

Hydrodrive™ technology and (optional) hydraulically run underwater treadmill are the centerpieces of our signature series.

## **X-Series Swim Spas (X500, X2000)**

SwimCross® technology, four airless and variable swim jets provide an excellent jetted swim and exercise option.

## **R-Series Swim Spas (R200, R220, R500)**

RecSport® technology, three airless swim jets and comfortable spa seating provide the ideal mix of features for aquatic recreation and backyard relaxation at an affordable price.

This Product Knowledge Guide provides valuable information on the features and benefits of E-Series Swim Spas, X-Series Swim Spas, and R-Series Swim Spas that will help you understand these unique products and educate your customers.

### **PERSONAL AND CONFIDENTIAL**

*This document contains trade secret, confidential and other proprietary information of Watkins Manufacturing Corporation. It is intended only for the use of the individual or entity to which it is addressed and contains information that is privileged and exempt from disclosure under applicable law. In no event shall any recipient of the information disclose, directly or indirectly, any of the information to any competitor of Watkins. Therefore, you are hereby notified that any dissemination, distribution or copying of the document is strictly prohibited.*

# Aquatic Fitness

Endless Pools™ is widely known for producing the most authentic swim-in-place experience in the aquatic industry today. All aquatic fitness systems provide the highest quality experience and excel in their categories. From powerful jets to accurate water flow, each model offers customers a premium experience that surpasses all competition in quality, design and performance.

Endless Pools remains the world leader in aquatic fitness due to advanced innovations combined with an everlasting mission: to provide customers with the highest quality and versatile, at-home aquatic fitness experience.

There is no 'one size fits all' when it comes to customer wellbeing. That's why Endless Pools offers three categories and eight different fitness systems to choose from.



### Models: E500, E550, E7000, E2000

E-Series swim spas are equipped with state-of-the-art fitness equipment, setting it apart from the competition. The Hydrodrive™ technology driven swim machine and treadmill are leaders in performance and design while remaining a functionally user-friendly system.

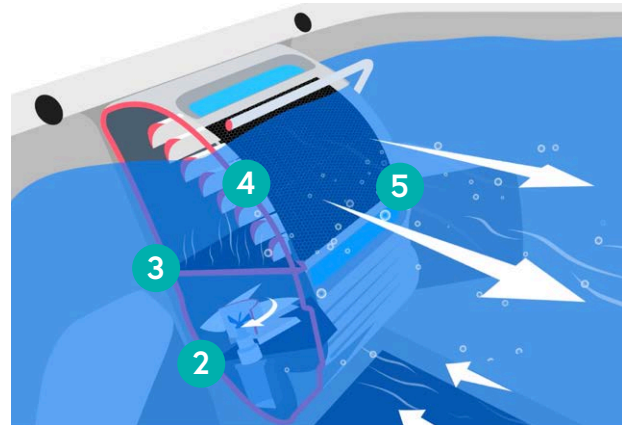
### The Hydrodrive Technology

Standing out from the crowd is the Hydrodrive technology, a custom-made hydraulic-powered propulsion system that quietly (60 dB) moves up to 19,000 litres per minute through multiple conditioning grills. This technology produces an authentic, smooth, and laminar swim current that is completely free of turbulence. The swim machine pace, measured in minutes per 100 metres, is variable between 1:14 and 4:14 per 100 metres. The higher the number, the slower the pace (and vice versa).

### Functionality

See below how the Hydrodrive technology creates the counter-current flow:

1. The 5HP Hydraulic Power Unit (HPU) pushes hydraulic oil into the hydraulic motor located within the stainless-steel cylinder (not shown)
2. The hydraulic motor turns the 40.6 cm propeller
3. The 40.6 cm propeller pushes water up into the first conditioning grill (the conditioning grill removes any air pockets from the water)
4. The water is redirected by eight turning vanes
5. Upon exit, the water will pass through another conditioning grill – creating a smooth laminar flow of water without any air



### Key Takeaways

- The Hydrodrive technology produces a turbulence-free, deep and wide counter-current swim that accommodates all levels of swimmer and all swim strokes
- The hydraulic propulsion system can move up to 19,000 litres per minute (LPM)
- A 40.6 cm propeller pushes current through two conditioning grills to provide a very authentic swim
- Hydrodrive technology minimum speed is 4:04/100 metres
- Hydrodrive technology maximum speed is 1:14/100 metres



## Treadmill

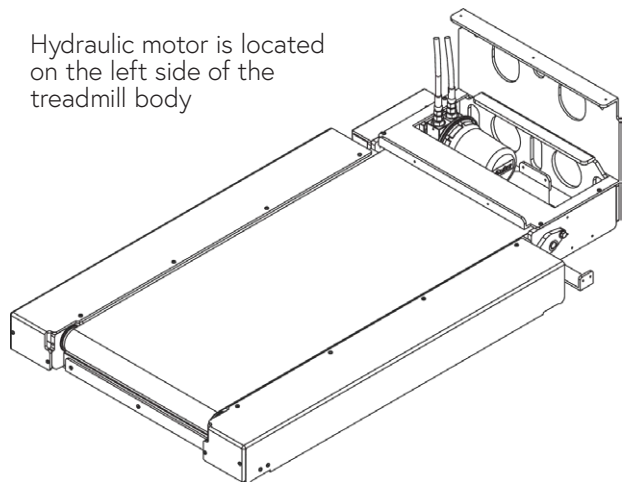
Endless™ Pools E-Series underwater treadmill offers low-impact walking and running options powered by a unique hydraulic power unit. The running belt operates when hydraulic fluid pumps into the hydraulic motor, driving sprockets and turning the belt drive.

The treadmill allows users to adjust speed from 0.8 - 8.9 kilometres per hour (KPH). Treadmill speed is measured in miles or kilometres per hour. Depending on duration, temperature, and speed, users may experience slight pulsing when the treadmill is operated on the slowest speed settings. This action is caused by the natural rotation of the hydraulic motor and will lessen as the treadmill speed is increased.

### Functionality

See below how the treadmill provides speed variability:

1. The 5HP Hydraulic Power Unit (HPU) pumps hydraulic oil into the hydraulic motor located in the top left section of the treadmill
2. The amount of hydraulic oil being pumped into the hydraulic motor is dictated by increasing or decreasing the speed of the treadmill
3. The hydraulic motor drives the treadmill sprockets, which turn the drive belt
4. The drive belt turns the drive drum, which turns the treadmill running belt



### Key Takeaways

- The materials used in the treadmill provide the durability and strength to support the impact of running in place
- Treadmills cannot be retrofitted into a Fitness System unit, they must be selected at the time of order
- Treadmill range of speed is 0.8 – 8.9 KPH

## Hydrodrive Technology and Treadmill Operation

The Hydrodrive™ technology and the treadmill can be operated independently by an Endless Pools remote control and/or by the Endless™ Pools Fit@Home™ WiFi & Mobile App.

### Remotes

The Hydrodrive technology and treadmill can be operated and adjusted by dedicated Endless™ Pools remote controls. The teal remote operates the Hydrodrive technology and the grey remote operates the treadmill.



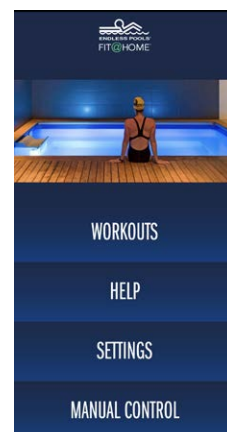
Fob Remotes

Each remote allows users to power the swim machine and treadmill on/off as well as increase/decrease the speed of each independently.

- Remotes are not water resistant and should not be emerged in water.

### Endless Pools Fit@Home™ App

The Fit@Home WiFi & Mobile App gives users full functionality of the Hydrodrive technology and/or treadmill from their mobile device. The app functions include manual speed control, workout program creation, and full visibility to pace, duration, and time. It is not intended to eliminate remotes or pace displays, rather add value as an additional tool for users who wish to control their fitness program from a personal device. The Fit@Home App is available for free download on Apple iOS and Android app stores. (See Fitness Accessories for more information)



Fit@Home App

### Key Takeaways

- All E-Series come with 2 teal remotes to operate the Hydrodrive technology and 2 grey remotes to operate the optional treadmill
- The Endless Pools Fit@Home WiFi & Mobile App can be used to control speed of the swim machine and treadmill manually plus it gives users the ability to create and customise their own workouts

## Hydraulic Power Unit

Each E-Series is equipped with a 5HP Hydraulic Power Unit (HPU) located in the equipment compartment that powers the Hydrodrive technology and optional treadmill.

Fitness Systems with Hydrodrive™ technology only have an HPU with a single control board and an oil reservoir that holds 15-19 litres of oil.

Swim spas containing Hydrodrive system and a treadmill have an HPU that has two control boards a larger oil reservoir that holds 28-30 litres of oil. This HPU also contains a heat exchanger that pulls water from the fitness system through cooling coils to help cool the oil while running. This cooling process maintains oil temperature while the HPU produces enough power to operate the treadmill and Hydrodrive system concurrently.

The HPU that operates the Hydrodrive technology and treadmill also has a parent/child relationship between treadmill speed and swim machine pace. When speed of the treadmill is increased, the swim machine pace is automatically reduced (See chart).

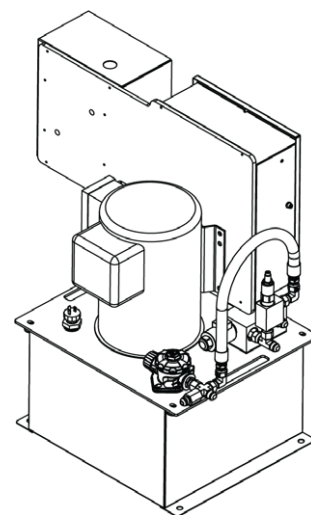
Treadmill Speed (KPH)	Swim Machine Pace (Min per 100 metres)
Off	1:14
0.8	1:28
2.30	1:29
2.48	1:30
2.68	1:31
2.88	1:32
3.29	1:33
3.43	1:34
3.65	1:35
3.88	1:36
4.11	1:37
4.34	1:38
4.59	1:39
4.83	1:40
5.00	1:41
5.25	1:42
5.52	1:43
5.78	1:44
6.05	1:45
6.33	1:46
6.61	1:47
6.80	1:48
7.10	1:49
7.39	1:51
7.70	1:52
8.00	1:53
8.32	1:54
8.64	1:56



## Functionality

See below how the Hydraulic Power Unit functions:

1. Each HPU is turned on/off through the provided FOB remotes or the Endless Pools Fit@Home™ App.
2. Once the HPU is turned on, a relay on the circuit board is opened, sending power to the electric motor.
3. The electric motor rotates the hydraulic pump at a constant RP allowing the hydraulic oil to pump constantly through the proportional valve into the hydraulic motor of the swim machine and/or treadmill.
4. Speed of the swim machine and treadmill are dictated by the hydraulic proportional valve, which opens/closes permitting more/less hydraulic oil to bypass the reservoir and power the Hydrodrive™ technology or treadmill directly.



Hydraulic Power Unit (HPU)

## Key Takeaways

- All E-Series swim spas contain an HPU, while X-Series and R-Series do not
- Each E-Series swim spa has an HPU that operates the exercise equipment
- If the E-Series swim spa only has Hydrodrive technology, the HPU contains one control board and an oil reservoir
- If the E-Series swim spa has Hydrodrive technology and treadmill, the HPU has two control boards and a larger oil reservoir

## X-SERIES SWIM SPAS

---

### Models: X500, X2000

X-Series swim spas offer an authentic jetted swim experience with four jets that enhance all aquatic fitness regimens, which includes providing ample resistance and lift for all levels of swimmer.

### SwimCross® Technology

All SwimCross Exercise Systems are designed for both swim and aquatic fitness and are suitable for all ages and skill levels.

Each X-Series model is designed with four swim jets making it easier to stay centred and afloat. The top three swim jets provide resistance while the bottom River jet primarily provides lift. Users can toggle the top jets and the river jet on/off independently to create a customised workout. Users also have the ability to adjust pace by adjusting the two diverters. The left diverter adjusts pace on the top three jets while the right diverter adjusts pace on the river jet. Pace for the top three jets can be adjusted from 760 LPM – 870 LPM. Pace on the river jet can be adjusted from 610 LPM – 680 LPM.



SwimCross® Swim Jets

Recent innovation also includes new added cross sections within all jet faces, which promotes a straighter, more consistent direction of water flow. The river jet is also adjustable, giving users the ability to dial in their preferred angle of flow and resistance for swimming, biking, and other aquatic fitness exercises. All swim jets use a venturi effect, not air, to entrain more water and increase the volume of water being pushed from the jet. This design feature results in stronger resistance with less turbulence, providing a more authentic swim and aquatic fitness workout. When all jets are on, noise level is 60 db.

### Key Takeaways

- Pace on the top three jets can be adjusted from 760 LPM – 870 LPM
- Pace on the river jet can be adjusted from 610 LPM – 680 LPM
- River jet flow angle is adjustable allowing users to customise the flow for their workout

### Swim Jet Pumps

The top three jets and the river jet are independently driven by two 2.5HP single-speed pumps, which provide a steady stream of water that is extremely powerful. The top three jets have a maximum output of 870 LPM on high speed. The river jet has a maximum output of 680 LPM.

### Key Takeaways

- X-Series swim spas use four swim jets with a venturi effect to enhance the current flow – no air is introduced
- Each X-Series swim spa has two, 2.5HP pumps dedicated to the swim jets

## R-SERIES SWIM SPAS

---

### Model: R200, R220, R500

R-Series swim spas offer a quality jetted experience with three swim jets, giving users the ability to swim with a focus on recreation and play. In addition to swimming, the jets are ideal for a variety of aquatic fitness regimens.

### RecSport® Technology

R-Series swim spas are designed to provide families with an affordable option. The RecSport system includes three swim jets that allow users of all abilities to enjoy swimming, exercise, family time, and relaxation. Recreation users will find it easier to stay centred because of innovative jet configuration, designed so each jet provides plenty of resistance for swimming and leisure activity. As an added bonus, users can simply toggle jets between two speeds to create a customised workout.

The RecSport swim jets also use a venturi effect, not air, to entrain more water and increase the volume of water being pushed from the jet. This design feature results in a less turbulent flow giving a more enjoyable recreation experience. When all jets are on high, noise level is 60 db. Recent innovation also includes new added cross sections within all jet faces, which allows for a straighter, more consistent direction of water flow.



RecSport® Swim Jets

### Swim Jet Pump

A total of three swim jets, driven by a dual-speed 2.5HP pump, provide a steady stream of water that is more powerful than average swim jets. The three jets have a maximum output of 805 LPM on high speed.

### Key Takeaways

- R-Series swim spas use three swim jets with a venturi effect to enhance the current flow – no air is introduced
- R-Series swim spas have one 2.5HP pump dedicated to the swim jets
- The three swim jets use a dual-speed pump which provides swimmers resistance at 380 LPM on low speed and 805 LPM on high speed



# External Design Features

The three Swim Spas categories each have a unique exterior design that differentiates it and shows a clear progression from good-better-best. Each design is available with two shell colour options and two cabinet colour options; with smooth, rounded corners and T-Spacers that tie the entire package together.

## CABINET OPTIONS

---

E-Series showcase the most premium look and design, X-Series are elegant and sleek, and R-Series offer a sporty look and feel.

### E-Series

E-Series have two cabinet colour options, Mocha or Grey. The cabinet panels are created using a custom film and provide long lasting durability with low maintenance. The Endless Pools Fitness Systems come standard with an LED light bar and an Endless Pools logo badge. The blue LED light is designed to provide visual appeal around the perimeter of the cabinet day or night.



Grey Cabinet



Mocha Cabinet

## X-Series

All X-Series models are designed with 18.4 cm outer cabinet panels that feature a finely brushed embossed texture, creating a backdrop for the 3D double contour bands that surround the entire swim spa. The double-contour bands play with light and shadow to create a visual depth and an overall aesthetically pleasing look and feel.



Grey Cabinet



Mocha Cabinet

## R-Series

All R-Series models are designed with 15.2 cm cabinet panels that feature a refined and embossed wood grain texture, an ideal backdrop for the single 3D contoured bands that surround the entire Recreation System. The contoured band plays with light and shadow to create a visual depth and interest to the siding, breaking up the pattern.



Grey Cabinet



Mocha Cabinet

## Key Takeaways

- All models offer two shell colours and two cabinet colours (four total combinations)
- E-Series cabinet comes standard with a blue LED light bar

## CORNERS

All models come with innovative corners made with a film substrate for an enhanced look and feel that are functional and cosmetically appealing. The primary purpose is to secure the cabinet to the frame in each corner while enhancing the overall look and feel. Examples can be seen on pages 14 (E-Series) and 14 (X-Series, R-Series).

### Key Takeaways

- All Aquatic Fitness Systems corners are made with a film substrate for an enhanced look and feel that also offers long-term durability

## T-SPACERS

All cabinets attach to the frame with innovative T-spacers that allow for cabinet expansion and contraction. The T-spacer's primary purpose is to secure the cabinet to the frame while maintaining the clean look and feel of the cabinet.



T-Spacer

### Functionality

The intent of the T-spacer is to simplify the removal of the cabinet panels. Follow the instructions below or refer to the Door Panel Removal Instructions for more information:

1. Locate the vertical T-spacer.
2. Remove the four screws holding the T-spacer using an 8 mm socket. Remove the T-Spacer.
3. Slide the panel towards the centre until the panel is no longer behind the corner.
4. While holding the panel, first pull the panel up then pull the bottom away from the system, lower the panel and set it on the ground.
5. There are two light bar harnesses attached to each side of the panel. Disconnect both before removing the panel.



Cabinet Panel Removal

### Key Takeaways

- T-Spacers allow for cabinet panel expansion and contraction during seasonal temperature changes
- All T-spacers are made with a film substrate for an enhanced look and feel that also offers long-term durability and easy maintenance



# Internal Design Features

The interior design of E-Series, X-Series, and R-Series swim spas feature a premium look that pairs very well with the exterior look and feel of all models. Each internal design features two shell colours options with markers, accent colours, LED lighting, hand rails, water features, hydromassage jets and a control panel that ties the entire package together.

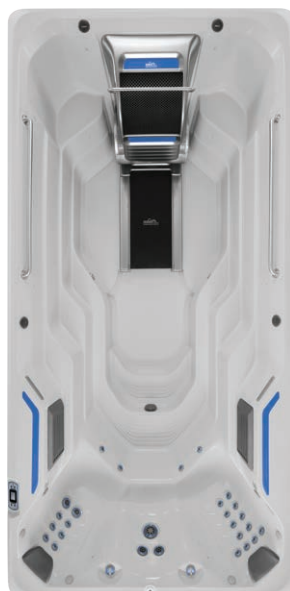
## SHELL COLOR OPTIONS

---

All models have two shell colour options, Alpine White or Ice Grey.



Alpine White



Ice Grey

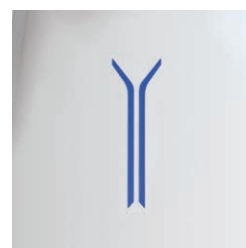
## SWIM LANE MARKER

---

The swim lane marker helps guide the swimmer to stay in line with the swim current. To complement this style element, there are teal accents on the bar top and on the jets as seen in the images above.

### Key Takeaways

- The swim lane markers help users stay aligned while swimming
- The swim lane markers are only visible on units without a treadmill



Swim Lane Market

## HANDRAILS

---

All swim spas have a handrail located near the swim machine/swim jets.

E-Series models have a 71 cm stainless-steel handrail attached to the swim machine that provides additional support when transitioning in and out of swim and treadmill activities

All X-Series and R-Series models have a 61 cm handrail located above the swim jets for additional support when transitioning in and out of the swim area.



Handrail attached to the Hydrodrive™ system

Additionally, all units except for the R220 have two 122 cm stainless-steel handrails along the side walls that are convenient and great for support or for attaching resistance bands. The E550 has four 61 cm handrails for even greater support throughout the unit.

### Key Takeaways

- All handrails are stainless steel
- There are at least 3 handrails in all Aquatic Fitness Systems except for the R220, which has 1 handrail
- The two handrails located along the sides of most models are 122 cm in length
- E550 has four handrails along the sides that are each 61 cm in length

## POINTS OF LIGHT (P.O.L.)

---

All models have multiple points of light in the interior of the unit. There are water line and step points of LED lighting to help provide full illumination. All lights have an automatic timeout set to four hours.

### Quantity per model

E-Series: E500 – 18, E550 – 24, E700 – 20, E2000 – 26

X-Series: X500 – 16, X2000 – 26

R-series: R200 – 20, R220 – 15, R500 – 24

### Key Takeaways

- All Aquatic Fitness Systems have full underwater illumination
- The automatic timeout for all lights is set to four hours

## WATERFALL FEATURES

Most models contain between 1-3 backlit waterfalls. The backlit multicolour LED waterfall lighting changes along with the interior lighting. Each of the waterfalls deliver a beautiful arching sheet of water that flows smoothly into the system. Use the conveniently located valve to control the flow or to turn off the waterfall.

### Key Takeaways

- All water features are backlit
- All water features lighting is synchronised with the other internal points of light
- The water feature control valve is located next to the filter towers
- E550 does not have a water feature



Waterfall

## HYDROMASSAGE JETS

All models have four different jet types and 23-36 total jets in the hydrotherapy section of each swim spa, depending on the model.



### Mini Jets

Mini jets deliver a direct, focused massage. The water flow is adjustable by rotating the jet faceplate  $\frac{1}{4}$  turn.



### Directional Jets

Directional jets allow you to redirect the jet stream by changing the position of the nozzle. The water flow is adjustable by rotating the jet faceplate  $\frac{1}{4}$  turn.



### Rotary Jets

Rotary jets provide a rotating massage pattern. The water flow is adjustable by rotating the jet faceplate  $\frac{1}{4}$  turn.



### Cluster Jet

Cluster jet provides a unique, pulsating massage. The water flow is adjustable by rotating the jet faceplate  $\frac{1}{4}$  turn.

All swim spa feature one 2.5HP single-speed jet pump that powers the hydrotherapy jets to deliver a quiet (59 dB with all jets on), yet vigorous massage while the use of air valves allows for an increase/decrease in hydromassage variability.

Model	Hydromassage Jet Pump	Hydromassage Jet Count	Water Feature Count
R200	2.5 HP – Dual-Speed	27	1
R220	2.5 HP – Dual-Speed	31	1
R500	2.5 HP – Dual-Speed	27	1
X500	2.5 HP – Dual-Speed	27	2
X2000	2.5 HP – Single-Speed	36	3
E500	2.5 HP – Single-Speed	27	2
E550	2.5 HP – Single-Speed	23	0
E700	2.5 HP – Single-Speed	27	2
E2000	2.5 HP – Single-Speed	36	3

### Key Takeaways

- All models feature hydromassage jets

## CONTROL PANEL & AUXILIARY CONTROL PANEL FUNCTIONALITY

Endless™ Pools Swim Spas feature user-friendly LCD control panel that provides multiple levels of functionality. The control panel allows users to turn the unit on and off, manage water temperature, change interior lighting colour, enable exterior lighting, control hydromassage jets, and manage music volume or selection.

An auxiliary control panel (E500 and E700 models only) is located on the opposite side of the main panel. This auxiliary panel provides easy access to control all interior and exterior lighting and hydromassage jets.

### Key Takeaways

- E500 and E700 units have one LCD Control Panel and one Auxiliary Control Panel
- X2000 and E2000 units have two LCD Control Panels and no Auxiliary Panels



LCD Control Panel



Auxiliary Control Panel

# Structure

All swim spas are built to last using premium components and a structurally superior design.

## 2MM STEEL FRAME

All E-Series and X-Series are built with a 2 mm galvanised steel frame as a standard feature. The frames are engineered to be extremely durable and help differentiate from the competition.

### Key Takeaways

- The solid steel frame comes standard on all E-Series and X-Series models



Steel Frame

## WOOD FRAME

All R-Series models are built with a wood frame that is very durable, significantly lighter than steel, and designed with the price-conscious consumer in mind.

### Key Takeaways

- R-Series models come standard with a wood frame



Wood Frame

## BASE PAN MATERIAL & FUNCTIONALITY

Made from heavy-duty ABS, the base pan is designed to prevent moisture from getting into the bottom of all models. The base pan also contains 'ribs' that help increase energy efficiency by minimising contact with the ground and is bonded to the frame using an industrial adhesive.

### Key Takeaways

- ABS base pan not only protects the equipment, but also increases the energy efficiency of the system by minimising the number of contact points with the ground

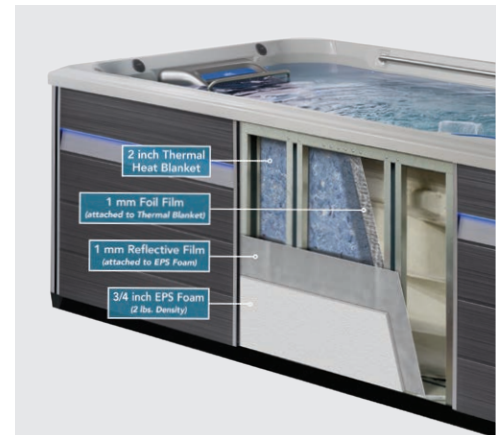


# Energy Efficiency

All Swim Spas are built standard with superior energy efficient materials. Items such as the Tri-Thermic™ Barrier System, a base pan, and bi-fold covers all help retain heat and maximise efficiency.

## TRI-THERMIC BARRIER SYSTEM

All models come standard with a factory-installed Tri-Thermic Barrier System, designed to conserve heat and enhance year-round energy efficiency with three-layers of insulation. The first two layers consist of a 2 cm, 32kg/m<sup>3</sup> EPS (Expanded Polystyrene) foam backed with reflective film, attached to the inside of the cabinet and layered in the base pan. The third layer is made up of a 5 cm thick heat blanket made of high-quality recycled textile fibres backed with a foil film. The combination of these insulating materials provides exceptional thermal performance, improving energy efficiency by up to 28%.



X2000 and E2000 dual-temp models are lined with the Tri-Thermic Barrier System around the fitness area and 8 kg/m<sup>3</sup> full foam around the spa area.

All swim spas are certified to the APSP 14 National Standard and the California Energy Commission (CEC) in accordance with California law. The addition of the Tri-Thermic Barrier System allows all products to meet CEC standards.

### Key Takeaways

- The factory-installed Tri-Thermic Barrier System is a three-layer system designed to conserve heat and enhance year-round energy efficiency by up to 28%
- Tri-Thermic Barrier System meets CEC standards
- X2000 and E2000 models are lined with the Tri-Thermic Barrier System around the fitness area while the spa area is lined with 8 kg/m<sup>3</sup> full foam

## ENERGY USAGE

The chart below provides estimated energy consumption based on six days of usage in a 16°C ambient temperature and at water temperature of 31 °C. Please see example and chart below on how to calculate the estimated monthly energy cost:

Equation: Model Usage x Local Energy Rate = Estimate Monthly Cost

Example: 411 x £0.11 = £45.21 per month

Model	Standby (Watts per Hour)	Usage (Kilowatts per Month)	Usage Details
R200	472 Watts	411 Kilowatts	6-days on, 1-day standby 40 minutes per day (20 min swim jets, 20 min hydro jets)
R220	370 Watts	322 Kilowatts	
R500	517 Watts	450 Kilowatts	
X500	517 Watts	450 Kilowatts	
X2000	642 Watts	592 Kilowatts	
E500	432 Watts	436 Kilowatts	6-days on, 1-day standby 60 minutes per day (20 min swim machine, 20 min treadmill, 20 min hydro jets)
E550	500 Watts	436 Kilowatts	
E700	508 Watts	511 Kilowatts	
E2000	642 Watts	592 Kilowatts	

### Key Takeaways

- To estimate the local monthly energy cost, find the model in the chart above and multiply Usage (kilowatts per month) by the local energy rate

## HEATING RATE

The heating rate for all models about 0.5 °C per 1.25 hours. For example, to raise the temperature 5 °C with a 3000w heater, the E500 will need approximately 13 hours at an ambient temperature of 15.5 °C.

### Key Takeaways

- The recommended optimal exercise and swim temperature is 29 °C
- Swim spas can reach a temperature of 40 °C, but it is not recommended that users exercise or swim in water temperature above 32 °C

## CIRCUIT SAVER FUNCTIONALITY

All models are factory installed with circuit saver functionality that is designed to help owners consume less energy without dramatically limiting the functionality of their fitness system. The charts below show factory installed circuit saver functionality and the concurrent conversion for each model.

### FACTORY INSTALLED

The factory-installed electrical configurations are shown below. Depending on the model, it will require a 24A breaker, 32A breaker, or two 24A breakers. The following chart describes each swim spa configuration:

Model(s)	Setup	Amperage	Factory Installed Circuit Saver Functionality
R200 R220 R500	All Models	24A	- When both pumps are on (swim and Hydrotherapy), heater shuts off
X500	All Models	32A	- When all three pumps are on (2 swim and Hydrotherapy), heater shuts off
X2000	All Models	48A (24/24)	- Swim Side: When both pumps are turned on, heater shuts off - Spa Side: When both pumps are turned on, heater shuts off
E500 E550 E700	Swim	48A (24/24)	- When Hydrotherapy jets are on, heater shuts off
	Swim & Tread	48A (24/24)	- When Hydrotherapy jets are on, heater shuts off
E2000	Swim	48A (24/24)	- Swim Side: When HPU is on, heater shuts off - Spa Side: When all hydrotherapy jets are on, heater shuts off
	Swim & Tread	48A (24/24)	- Swim Side: When HPU is on, heater shuts off - Spa Side: When all hydrotherapy jets are on, heater shuts off

### CONCURRENT CONFIGURATIONS

Additional electrical configurations are available. By converting to 34A breaker, 44A breaker, 56A breaker, 57A breaker, two 34A breakers, 80A breaker, or 92A breaker, users will have the ability to operate all equipment concurrently - the Hydrodrive™ system, treadmill, heater, and jet pumps. The following chart describes each model configuration:

Model(s)	Setup	Conversion	Subpanel Configuration	Concurrent Configuration Functionality
R200 R220 R500	All Models	32A	Spa Control 32A	- Full concurrent functionality
X500	All Models	32A	Spa Control 32A	- Already at control system limit
X2000	All Models	68A (34/34)	Swim Control 24A Spa Control 32A	- Swim Side: Full concurrent functionality - Spa Side: Full concurrent functionality
E500 E550 E700	Swim	56A (24/32)	HPU 30A Spa Control 32A	- Full concurrent functionality
	Swim & Tread	57A (25/32)	HPU 30A Spa Control 32A	- Full concurrent functionality
E2000	Swim	80A (24/16/40)	HPU/Swim Control 16A Spa Control 40A	- Swim Side: When HPU is on, Heater shuts off - Spa Side: Full concurrent functionality
	Swim & Tread	92A (28/24/40)	HPU/Swim Control 24A Spa Control 40A	- Swim Side: When HPU is on, Heater shuts off - Spa Side: Full concurrent functionality

# Aftermarket Fitness Accessories and Options

All models are compatible with additional aftermarket accessories that are designed to enhance the aquatic fitness user experience.

## SOUND SYSTEM

---

All swim spas can be ordered with an optional factory-installed Bluetooth® music system. A music-ready model has a total of eight speakers and a subwoofer. 2.5 cm speakers are located on the hydromassage side and 7.5 cm speakers are located on the swim side. The subwoofer is in the equipment compartment. Follow the instructions in the Owner's Manual to pair any Bluetooth device.



3" Speaker

### Key Takeaways

- The eight speakers + subwoofer system provides a great music experience
- Pair any Bluetooth device to the system through the control panel to play music

## ENDLESS™ POOLS SURFACE KITS

---

Available on all swim spas, Endless Pools® Surface Kits are a nonabsorbent, closed cell PE/EVA blended material that adds traction and comfort for exercise and play!

These non-slip pads are designed specifically for each model to give users visual confidence and traction during entry and exit in addition to providing the best experience for aquatic fitness. Step kits and floor kits are sold separately, available on all models, and they look great!



Endless Pools® Surface Kits  
shown on R500

### Key Takeaways

- Endless Pools Surface Kits are available on all models
- Step kits and floor kits are designed specifically for each model and are sold separately

## EXTERIOR LED LIGHTING

Available exclusively on X-Series and R-Series, the LED light bars are designed to fit seamlessly into the Corners and/or T-Spacers, creating a built-in appearance once installed. Similar to the LED light bar found on E-Series, the illumination is a stunning Endless Pools Blue. Two kit options are available for each model: 4-Piece or 8-Piece LED Light Bar Kit. All kits come ready to install with all required components included, allowing users to control the lighting from the control panel.



LED lights shown on R220

4-Piece LED Light Bar Kit (127 cm units) part number: 78927

8-Piece LED Light Bar Kit (127 cm units) part number: 78928

4-Piece LED Light Bar Kit (X2000) part number: 78929

8-Piece LED Light Bar Kit (X2000) part number: 78930

### Key Takeaways

- Exterior LED Lighting kits are compatible with X-Series and R-Series only

## AQUABIKE

Built on a lightweight aluminium frame weighing just 10 kg, the AquaBike is a must have for total workout versatility. The AquaBike is compatible with all models and has an adjustable base, seat, and handlebars making it comfortable for all users. For added resistance, simply position the AquaBike in front of the swim current or swim jets to increase intensity.

AquaBike part number: 78518



Aquabike

### Key Takeaways

- AquaBike is compatible with all swim spa models

## EXERCISE KIT

All models are equipped with anchors, which are designed to connect with the Resistance band on one side and the exercise equipment on the other. The E purchased separately and includes the following: 2-5 kg bands, 2-7 kg bands, 2-9 row bar, 1 rope, and 1 polyester bag.

Exercise Kit part number: 79699



Exercise Kit

### Key Takeaways

- Exercise Kit can be used for a variety of non-impact exercises



## RESISTANCE BANDS KIT

All models have two anchors, except for the E550 which has four anchors, which are designed to connect with the Resistance Bands kit. This kit can be purchased separately and includes the following: 2 5 kg bands, 2 7 kg bands, 2 9 kg bands, and 1 canvas bag.

Resistance Band part number: 78393



Resistance Bands

### Key Takeaways

- Resistance bands can be used for a variety of non-impact exercises

## SWIM TETHER KIT

The swim tether kit can be purchased separately and is compatible with all swim spa models. Tether kits include the following: 2-piece tether rod, 3 bands (61 cm, 91.5 cm, and 122 cm), 1 adjustable strap, 1 waist belt, and 1 bag.

Swim Tether Kit part number (all models): 77689



### Key Takeaways

- The swim tether will add additional resistance to the swimmer and will help align the swimmer to remain centred in the counter current
- The swim tether will help elevate the swimmers hips to promote better form

## FLOOR MIRROR

Swimmers can view and improve swimming form using the optional 61 x 130 cm stainless steel mirror. The mirror can be placed on the floor of any model although it is not recommended on models with a treadmill. The floor mirror comes with 4 suction cups that help with installation and ensure it stays in place.

Stainless Steel Floor Mirror part number: 77587



Floor Mirror in X200

### Key Takeaways

- The Floor Mirror is a polished stainless-steel mirror that will not break
- Not recommended for use when treadmill is installed

## PACE DISPLAY(S)

---

Available for use exclusively with the E-Series models, Pace Displays plug into the HPU and display speed (treadmill) or pace (swimming). To display both the treadmill speed and swim pace simultaneously, two Pace Displays are required. Pace Displays are adjustable to display imperial or metric units. Follow the instructions on the Pace Display to customise settings. Pace Display part number: 77909



### Key Takeaways

- Highly recommended for use in all E-Series models
- The Pace Display exterior is weather-resistant and is intended for outdoor use
- To show speed (treadmill) and pace (swim machine), two Pace Displays are required
- Not compatible with X-Series or R-Series

## COOLZONE™ COOLING SYSTEM\*

---

All Swim Spas can be paired with a CoolZone™ Cooling System to help cool, heat, or regulate water temperature efficiently. An interface kit is required to pair CoolZone with a Fitness System's control panel. CoolZone Interface Kit part number: 78068

### Key Takeaways

- CoolZone helps cool, heat, and regulate temperature efficiently

## 4-TIER STEPS

---

The four tread 71 cm high 4-Tier Steps allow for easy entry/exit of all Endless™ Pools swim spas models. The new 4-Tier Steps come in one colour combination (Black) with a single handrail, optional back rail (included), and double-wide platform at the top. The steps provide flexibility with multiple configurations for universal installation. Assembly is quick and easy, and the sturdy construction makes these an ideal option for any swim spa.

Dimensions: 76cm L x 127 cm W x 71 cm H

Weight Capacity: 136 kg

4-Tier Steps part number: 78705



4-Tier Steps

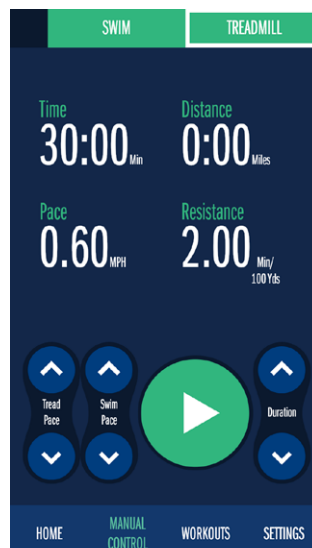
### Key Takeaways

- 4-Tier Steps are offered in one colour, ideal for all models
- Multiple configuration options provide entry flexibility

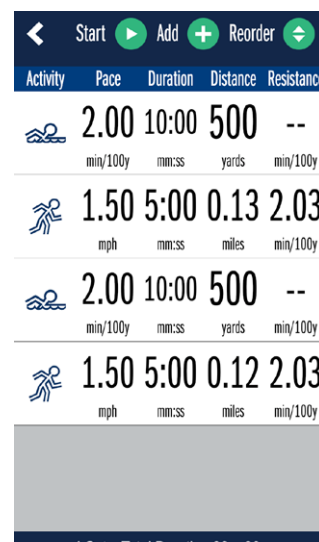
## FIT@HOME™ WI-FI KIT & MOBILE APP

The Endless™ Pools Fit@Home™ App puts full workout functionality at the fingertips of Fitness System owners and can be downloaded free on any device that supports Apple or Android operating systems.

In addition to giving users the ability to create their own workout, the Fit@Home App also gives users the ability to manually adjust speed, pace, and duration specific to their goals. The Fit@Home App should not, however, be considered a replacement to the pace display(s) or remotes. Users should use pace displays in addition to the App for the utmost experience.



Manual Controls



Workout Creation

To use the Fit@Home App with an Endless Pools swim spa, a Wi-Fi Kit installation is required. The WiFi kit consists of a WiFi board and antenna that hook directly to the HPU, producing a WiFi signal compatible with most mobile devices. It is recommended that the Wi-Fi kit be dealer installed.

Fit@Home WiFi Kit part number: 77916

### Key Takeaways

- Control time, distance, pace, and resistance in manual control mode
- Users can create and save custom workouts
- The Fit@Home App should not replace Pace Displays
- Fit@Home WiFi Kit is required – sold separately

## GECKO® IN.TOUCH 2 WI-FI KIT & MOBILE APP

The Gecko® In.Touch 2 App gives users full functionality of temperature, lighting, and the hydrotherapy jets at their fingertips and can be downloaded free on any device that supports Apple or Android operating systems.

To use the Gecko In.Touch 2 App with any Endless™ Pools swim spa (includes X-Series and R-Series models), a Wi-Fi Kit is required. The WiFi kit consists of a WiFi board and antenna that hook directly to the control box, producing a WiFi signal compatible with most mobile devices. It is recommended that the Wi-Fi kit be dealer installed. Include: The X2000 and E2000 require two (2) separate Gecko® In.Touch 2 installations to operate the swim and spa side independently.



Gecko In.Touch 2 WiFi Kit part number: 78428

### Key Takeaways

- The Gecko In.Touch 2 App is for users who prefer to use digital technology to control temperature, lighting, and hydrotherapy

# Covers & Lifters

All Endless™ Pools swim spas offer a variety of cover and lifter options. Please note swim spas do not come standard with a cover or a lifter, they must be ordered separately.

## WATKINS COVERS

---

Watkins covers help maintain heat and reduce evaporation. They can be used with or without lifters, but should remain on the fitness system when it is not being used. The Black solution dyed polyester is available for all models, which is durable with a light-weight material.

### Key Takeaways

- Watkins covers provide insulation and limit evaporation in the swim spa

## WATKINS UPRITE® / PROLIFT® IV LIFTERS

---

Watkins UpRite™ / ProLift™ IV lifters are compatible and work great with all swim spas. It is however, highly recommended users replace the 27 kg shocks with the 41 kg shocks included in the EP lifter kit that is sold separately (PN 77708). When using the UpRite/ProLift IV lifters, please ensure at least 104 cm vertical clearance and 18 cm clearance behind the Fitness System.

### Key Takeaways

- UpRite/ProLift IV lifters are compatible with all swim spas

## WATKINS COVERCRADLE® / PROLIFT® III LIFTERS

---

CoverCradle™ and ProLift™ III lifters are compatible and work great with all swim spas, but do require spacer kits for installation on all models. These lifters are great for ease of use and greater visibility when installed on any model. There is a required spacer kit for X-Series and R-Series models (PN 79124) and E-Series models (PN 79125).

### Key Takeaways

- CoverCradle® and ProLift® lifters are compatible with all swim spas with the required spacer kit for X-Series and R-Series models (PN 79124) and E-Series models (PN 79125)

## EASY SLIDER COVER MOUNTS

---

Easy Slider Cover Mounts are ideal for customers trying to preserve the view when exercising in their swim spa. Compatible with all Fitness Systems, the Easy Slider mounts fully support the weight of the covers and automatically 'open and close' as the covers are pulled on/off the bar top. Easy Sliders are available in two colours that match the cover colours, Mocha and Grey.



### Key Takeaways

- Easy Slider Cover Mounts are compatible with all swim spas

# Water Care

Water care is vital to the success of maintaining and prolonging the life of all Endless™ Pools swim spas. Although it is important to read this section, please note that not all conditions are the same. Usage patterns will often dictate water care requirements and it is recommended that owners consult with a pool care specialist for any specific questions.

## LITRES BY MODEL

Model	Water Capacity (Litres)	Water Capacity W/Treadmill (Litres)
R200	5,054	N/A
R220	4,090	N/A
R500	6,624	N/A
X500	6,250	N/A
X2000	7,570 Swim /1,325 Spa	N/A
E500	6,700	6,575
E550	9,047	8,934
E700	8,140	7,950
E2000	7,740 Swim / 1,325 Spa	7,575 Swim /1,325 Spa

## UVC + CD OZONE\* (60HZ ONLY)

All E-Series and X-Series swim spas come standard with a combined Ultraviolet C (UVC) + Corona Discharge (CD) Ozone system (E2000 and X2000 spa areas have CD Ozone systems only). This sanitation system is a dual process that combines the CD Ozone Generator and an UVC lamp, commonly known as an Advanced Oxidation Process (AOP). The UVC lamp kills bacteria on contact providing a maximum water sanitation solution. Paired with the UVC lamp that provides a germicidal benefit, the UVC + CD Ozone provides a top-quality water sanitation solution.

R-Series swim spas do not come with UVC, but they do come standard with the CD Ozone system.

### Key Takeaways

- UVC lamp kills bacteria on contact to sanitise the water
- Combination of UVC + CD Ozone provides a top-quality water sanitation solution
- X500, X2000 (swim area) E500, E550, E700, and E2000 (swim area) come standard with UVC + CD Ozone
- R200, R220, R500, X2000 spa area, and E2000 spa area come standard with CD Ozone only

For all non-EU countries who have 50 Hz electrical requirements and require Ozone, an after-market ozone system is available as an accessory, which can be installed in the field.

\*Please check with local dealer on availability



## SILVER ION MINERAL CARTRIDGE

The Silver Ion Mineral Cartridge is a purifier that releases silver ions into the water to help control bacteria. It is highly recommended that owners use a Silver Ion Mineral Cartridge in the aquatic fitness area of all models. The cartridge can be placed into the filtration basket for easy access and removal when needed.

## WATER QUALITY

Water quality depends on the source water and usage pattern.

Parameter	Target	Min - Max Range
pH	7.4	7.2 – 7.8
Alkalinity	100 ppm	80 ppm – 120 ppm
Calcium Hardness	100 ppm	50 ppm – 150 ppm
Chlorine	1.5 ppm	1 ppm – 3 ppm

### Key Takeaways

- Keeping the water balanced helps prolong the life of the system components

## NEW OWNERSHIP RECOMMENDATIONS

- Daily:** Test for free chlorine (FC) after you swim, or at least twice a week. Add chlorine to maintain FC levels between 0.5 - 3 ppm.
- Twice a week: Check and adjust water level. Water should be approximately 15 cm from the top. A water level that is 1 cm lower than this can create a choppy current and may cause your skimmer to draw air into the plumbing lines. Having the water level 2.5 cm or higher will cause more water to get splashed out of the spa.
- Test for ph.
- Weekly:** Test for total alkalinity (TA) once a week.
- Every two weeks:** Test for calcium hardness (CH) once every two weeks.
- Every six weeks:** Remove and clean the filter cartridge

## FILTER CHANGE/CLEANING SCHEDULE

It is recommended that owners clean the filters regularly (minimum every 30 days) to maintain high water quality. It is also recommended that owners replace the filters every three years.

### Key Takeaways

- Every 30 Days – clean filters (spray with a garden hose)
- Every 60 Days – change filters (recommend having more than 1 set)
- Every 3 years (or as needed) – replace the filters

## WATER CONSERVATION

Proper maintenance of the water can greatly increase the time between draining and refilling. The cover also reduces evaporation and water waste by 95%.

### Key Takeaways

- Water conservation and maintenance is important
- Water maintenance is largely dependent on usage pattern
- Always use a cover or cover system to help prevent heat loss and water evaporation

## WATER CIRCULATION

Due to the large amount of water in E-Series swim spas, a hi-flow 1/15HP circulation pump turns over water at 76 litres per minute. This circulation pump quietly (48 dB) provides adequate water turnover while energy efficient. The chart below provides the time a full system water turnover will occur and the number of times per day.

Model	Type	Turn Rate	Litres	Turnovers/Day
E500	Swim	76 Litres/Min	6,700	16
E500	Swim + Treadmill	76 Litres/Min	6,757	17
E550	Swim	76 Litres/Min	9,047	12
E550	Swim + Treadmill	76 Litres/Min	8,934	12
E700	Swim	76 Litres/Min	8,140	13
E700	Swim + Treadmill	76 Litres/Min	7,950	14
E2000	Swim	76 Litres/Min	7,575	14
E2000	Swim + Treadmill	76 Litres/Min	7,740	14
E2000	Spa	76 Litres/Min	3501,325	82

Minimum recommendation is to change 50% of the water annually; however, it is dependent on the amount of usage.

### Key Takeaways

- The E-Series swim spas hi-flow circulation pump provides quiet and energy-efficient water circulation 24 hours a day for maximum filtration and water management with the UVC + CD Ozone system\*
- The X-Series and R-Series swim spas low-speed hydromassage pump circulates the water with a factory default setting of 10 hours a day, but it is programmable. For maximum filtration and water management with the UVC + CD Ozone system\*.

\*Please check with local dealer on availability

## WATER MAINTENANCE RECOMMENDATIONS

---

### Filling the System

Use the Clean Screen® pre-filter to remove unwanted contaminants such as rust, dirt, detergents, and algae from the source waters. Dissolved metals, copper, iron, and manganese are also removed. Always fill the system through the filter compartment. Do not fill the system using water from a swimming pool as pool chemicals are very different from those used in E-Series, X-Series, and R-Series swim spas.

### Establish Proper pH Level

The recommended range for pH is between 7.2 and 7.8. If the reading is too high, lower the pH by using a pH Down/Decrease (sodium bisulfate). If the pH level needs to be increased, use a pH Up/Incraser (sodium hydrogen carbonate). Any pH Up or Down should be added one tablespoon at a time, waiting one-half hour between application and re-measuring. Muriatic acid can also be used; adding chemical 1 tablespoon at a time for this volume is conservative.

### Measure Total Alkalinity

The ideal range is between 80-120 parts per million (PPM). If the total alkalinity is too high, it should be reduced by using an Alkalinity Down/Decrease (sodium bisulfate). If the total Alkalinity is too low, it can be increased by adding an Alkalinity Up/Incraser (sodium bicarbonate or sodium hydrogen carbonate). These products should be added in small amounts – a tablespoon at a time. After adding one tablespoon, wait one half-hour before re-measuring. A quarter cup may be best for any unit with over 7,570 litres.

### Determine Calcium Hardness

It is important to bring the calcium range between 50-150 PPM. If the water is too soft (below 50 ppm) calcium hardness should be added to the water to increase the PPM reading. If the water is too hard (above 150 ppm), it can be corrected by adding a mixture of hard and soft water to attain a reading in the safe range or by adding stain and scale control. If calcium hardness is a problem with the local source water (either too hard or too soft), a test kit that measures calcium hardness, is essential.

### Sanitising

The water must be sanitised using chlorine (sodium dichloride). Add two tablespoons of Chlorine and increase as necessary to reach a level of 0.5-3 ppm. Check and maintain the level weekly, and before and after using the system. To minimise the potential for cyanuric acid build up and chlorine lock, liquid sodium hypochlorite, bleach, or lithium hypochlorite can also be used.

# Warranty Information

## E-SERIES SWIM SPA WARRANTY INFORMATION

E-Series Swim Spa Limited Warranty	
10-Year No Leak Shell	Watkins warrants against water loss due to defects in the E-Series swim spa shell for ten years.
7-Year Shell Surface	Watkins warrants the acrylic surface material of the E-Series swim spa to be free from defects in materials and workmanship for seven years. Additionally, the acrylic surface material is structurally warranted not to leak for a period of seven years. The acrylic surface material is non-permeable and will not absorb odours, bacteria or pollutants.
5-Year No Leak Plumbing	Watkins warrants the E-Series swim spa against leaks caused by defects in manufacturing and workmanship for five years. This warranty specifically covers leaks from the wall fittings, jet fittings, internal plumbing, internal glue joints, drains, hoses, and all bonded parts.
5-Year Component	Watkins warrants the electrical components, pumps, jets, air valves, levers, bezels and other E-Series swim spa components against defects in materials and workmanship for five years. Some parts, most of which can be changed out without the use of tools, such as filter cartridges, filter lid, and cover locks, are not included in this warranty, but are warranted to be free from defects in materials and workmanship at the time of delivery. System covers and other accessories are specifically excluded from this warranty, although they may be covered by other warranties. Please check with E-Series swim spa dealer for details.
5-Year Heater	Watkins unconditionally warrants the heater to be free from defects in materials and workmanship for five years. This warranty defines unconditional, with the exclusion of commercial or industrial use, and improper installation, as warranty coverage provided that the component has failed to operate properly within the system.
5-Year Cabinet	Watkins warrants the E-Series swim spa cabinet material to be free from defects in materials and workmanship for five years. This warranty specifically covers the cabinet's structural integrity (exclusive of surface stain), including the material and assembly.
2-Year Light Assembly	Watkins warrants the LED light assemblies, which consists of all lights within the system, including the underwater and exterior to be free from defects in materials and workmanship for two years.
2-Year Water Sanitation	Watkins warrants the electrical components, ozone tubing, check valve, injector, UVC light bulb, corona discharge cell and exterior housing of the corona discharge ozone purification system against defects in material and workmanship for two years.
1-Year Sound System	Watkins warrants the factory-installed sound system, which includes the stereo, speakers, and amplifier to be free from defects in material and workmanship for one year.
2-Year Swim Machine	Watkins warrants to the original purchaser of E-Series Swim Spa Hydrodrive™ Technology to be free from defects in materials and workmanship for two years. Watkins obligations under this warranty shall be limited to the repair or exchange (at our options) of any part or parts which prove defective under normal use within two years from the date of purchase by the original purchaser, and which our examination shall disclose to our satisfaction to be thus defective.
2-Year Treadmill	Watkins warrants to the original purchaser of E-Series Treadmill to be free from defect in material and workmanship under normal use for two years from purchase. Watkins obligations under this warranty shall be limited to the repair or exchange (at our option) of any part or parts which prove defective under normal use within two years from date of purchase by the original purchaser, and which our examination shall disclose to our satisfaction to be thus defective.

## X-SERIES WARRANTY INFORMATION

X-Series Swim Spa Limited Warranty	
10-Year No Leak Shell	Watkins warrants against water loss due to defects in the X-Series swim spa shell for ten years.
7-Year Shell Surface	Watkins warrants the acrylic surface material of the X-Series swim spa to be free from defects in materials and workmanship for seven years. Additionally, the acrylic surface material is structurally warranted not to leak for a period of seven years. The acrylic surface material is non-permeable and will not absorb odours, bacteria or pollutants.
5-Year No Leak Plumbing	Watkins warrants the X-Series swim spa against leaks caused by defects in manufacturing and workmanship for five years. This warranty specifically covers leaks from the wall fittings, jet fittings, internal plumbing, internal glue joints, drains, hoses, and all bonded parts.
5-Year Component	Watkins warrants the electrical components, pumps, jets, air valves, levers, bezels and other X-Series swim spa components against defects in materials and workmanship for five years. Some parts, most of which can be changed out without the use of tools, such as filter cartridges, filter lid, and cover locks, are not included in this warranty, but are warranted to be free from defects in materials and workmanship at the time of delivery. System covers and other accessories are specifically excluded from this warranty, although they may be covered by other warranties. Please check with X-Series swim spa dealer for details.
5-Year Heater	Watkins unconditionally warrants the heater to be free from defects in materials and workmanship for five years. This warranty defines unconditional, with the exclusion of commercial or industrial use, and improper installation, as warranty coverage provided that the component has failed to operate properly within the system.
5-Year Cabinet	Watkins warrants the X-Series swim spa cabinet material to be free from defects in materials and workmanship for five years. This warranty specifically covers the cabinet's structural integrity (exclusive of surface stain), including the material and assembly.
2-Year Light Assembly	Watkins warrants the LED light assemblies, which consists of all lights within the system, including the underwater and exterior to be free from defects in materials and workmanship for two years.
2-Year Water Sanitation	Watkins warrants the electrical components, ozone tubing, check valve, injector, UVC light bulb, corona discharge cell and exterior housing of the corona discharge ozone purification system against defects in material and workmanship for two years.
1-Year Sound System	Watkins warrants the factory-installed sound system, which includes the stereo, speakers, and amplifier to be free from defects in material and workmanship for one year.



## R-SERIES WARRANTY INFORMATION

R-Series Swim Spa Limited Warranty	
10-Year No Leak Shell	Watkins warrants against water loss due to defects in the R-Series swim spa shell for ten years.
5-Year Shell Surface	Watkins warrants the acrylic surface material of the R-Series swim spa to be free from defects in materials and workmanship for five years. Additionally, the acrylic surface material is structurally warranted not to leak for a period of five years. The acrylic surface material is non-permeable and will not absorb odours, bacteria or pollutants.
3-Year No Leak Plumbing	Watkins warrants the R-Series swim spa against leaks caused by defects in manufacturing and workmanship for three years. This warranty specifically covers leaks from the wall fittings, jet fittings, internal plumbing, internal glue joints, drains, hoses, and all bonded parts.
3-Year Component	Watkins warrants the electrical components, pumps, jets, air valves, levers, bezels and other R-Series swim spa components against defects in materials and workmanship for three years. Some parts, most of which can be changed out without the use of tools, such as filter cartridges, filter lid, and cover locks, are not included in this warranty, but are warranted to be free from defects in materials and workmanship at the time of delivery. System covers and other accessories are specifically excluded from this warranty, although they may be covered by other warranties. Please check with R-Series swim spa dealer for details.
3-Year Heater	Watkins unconditionally warrants the heater to be free from defects in materials and workmanship for three years. This warranty defines unconditional, with the exclusion of commercial or industrial use, and improper installation, as warranty coverage provided that the component has failed to operate properly within the system.
3-Year Cabinet	Watkins warrants the R-Series swim spa cabinet material to be free from defects in materials and workmanship for three years. This warranty specifically covers the cabinet's structural integrity (exclusive of surface stain), including the material and assembly.
2-Year Light Assembly	Watkins warrants the LED light assemblies, which consists of all lights within the system, including the underwater and exterior to be free from defects in materials and workmanship for two years.
1-Year Water Sanitation	Watkins warrants the electrical components, ozone tubing, check valve, injector, corona discharge cell and exterior housing of the corona discharge ozone purification system against defects in material and workmanship for one year.
1-Year Sound System	Watkins warrants the factory-installed sound system, which includes the stereo, speakers, and amplifier to be free from defects in material and workmanship for one year.

## AFTERMARKET ACCESSORIES WARRANTY INFORMATION

Aftermarket Accessories Limited Warranty	
2-Year Pace Display	Watkins warrants the pace display to be free from defects in material, workmanship, and operation for two years provided the component has failed to operate properly within normal use conditions.
2-Year Exercise Kit	Watkins warrants the Exercise Kit to be free from defects in material, workmanship, and function for two years provided the component is installed correct and has failed to operate properly within normal use conditions.
2-Year Resistance Bands Kit	Watkins warrants the resistance band kit to be free from defects in material, workmanship, and function for two years provided the component is installed correct and has failed to operate properly within normal use conditions.
2-Year Swim Tether Kit	Watkins warrants the swim tether kit to be free from defects in material, workmanship, and function for two years provided the component is installed correct and has failed to operate properly within normal use conditions.
2-Year Floor Mirror	Watkins warrants the floor mirror to be free from defects in material and workmanship for two years provided the component has failed to operate properly within normal use conditions.
2-Year AquaBike	Watkins warrants the AquaBike to be free from defects in material and workmanship for two years provided the component has failed to operate properly within normal use conditions.
2-Year Endless Pools® Surface Kits	Watkins warrants Endless Pools® Surface Kits covered products to be free from defects in workmanship and materials for two years provided the material is installed correct and has failed to function properly within normal use conditions.
2-Year CoolZone®	Watkins warrants to the original consumer purchaser, at retail, that the components of the CoolZone Hot Tub Cooling System will be free from defects in material and workmanship for two years from the original purchase date.

# Product Specifications

## E-SERIES E500

E500	Swim	Swim & Treadmill
Dimensions	457 x 226 x 147 cm	457 x 226 x 147 cm
Water Capacity	6,705 litres	6,570 litres
Dry Weight	1,320 kg	1,375 kg
Filled Weight*	8,800 kg	8,725 kg
Shell Colour Options	Alpine White or Ice Grey	
Cabinet Colour Options	Mocha or Grey	
Swim Technology	Hydrodrive™ Technology	
Hydraulic Power Unit	5.0 HP HPU	5.0 HP Tandem HPU
Hydromassage Seats	3	
Hydromassage Jets - 27	1 Large Jet; 2 Rotary Jets; 2 Directional Jets; 22 Mini Jets	
Hydromassage Jet Pump	2.5 HP Continuous Duty; 5.2 HP Breakdown Torque - 1 Speed Pump	
Control System**	LCD Control Panel; 230V/50Hz 24A + 32A	LCD Control Panel; 230V/50Hz 2x24A
Water Feature	2 Illuminated Waterfalls	
Water Management System***	UVC + CD Ozone	
Circulation Pump	High-Flow Circulation Pump	
Effective Filtration Area	18 m <sup>2</sup>	
Lighting System	18 Multi-Colour LED Points of Light & Exterior LED Illumination Bar	
Substructure	2 mm Galvanised Steel Frame	
Base Pan	Thermoformed ABS Base Pan	
Heater	3000w/220 - 240v	
Energy Efficiency	EPS Foam + Reflective Film; Certified to the APSP 14 National Standard and the California Energy Commission (CEC) in accordance with California Law	
Music Option	8 Speakers + Subwoofer, Bluetooth® Enabled	

For the most up-to-date information, please visit [EndlessPools.co.uk](http://EndlessPools.co.uk).

All rights reserved. Specifications, colours, and surface materials subject to change without notice

\*Includes water and 10 adults weighting 80 kg each

\*\*Also offered in a 3 Phase configuration 380-415V, 3N-, 16A, 50Hz, Three Phase 16A/phase G.F.C.I protected circuit, other electrical configurations

\*\*\*Please check with local dealer on availability

## E-SERIES E550

E550	Swim	Swim & Treadmill
Dimensions	457 x 239 x 147 cm	457 x 239 x 147 cm
Water Capacity	9,050 litres	8,935 litres
Weight	1,625 kg (Dry) / 11,450 kg (Filled*)	1,680 kg (Dry) / 11,390 kg (Filled*)
Shell Colour Options	Alpine White or Ice Grey	
Cabinet Colour Options	Mocha or Grey	
Swim Technology	Hydrodrive™ Technology	
Swim Power Unit	5.0 HP HPU	5.0 HP Tandem HPU
Hydromassage Jets - 23	1 Large Jet, 3 Rotary Jets, 3 Directional Jets, 16 Mini Jets	
Hydromassage Jet Pump	2.5 HP Continuous Duty; 5.2 HP Breakdown Torque – 1 Speed Pump	
Control System**	LCD Control Panel 230V/50 Hz	
	2 x 24A	24A + 32A
Water Management System***	UVC + CD Ozone (60Hz only)	
Effective Filtration Area	18 m <sup>2</sup>	
Lighting System	24 Multi-Colour LED Points of Lights & Exterior Illumination Bar	
Substructure	2 mm Galvanised Steel Frame	
Base Pan	Thermoformed ABS Base Pan	
Energy Efficiency	EPS Foam + Reflective Film; Certified to the APSP 14 American Standard and the California Energy Commission (CEC) in accordance with California Law	
Music Option	8 Speakers + Subwoofer, Bluetooth® Enabled	

For the most up-to-date information, please visit [EndlessPools.co.uk](http://EndlessPools.co.uk).

All rights reserved. Specifications, colours, and surface materials subject to change without notice

\*Includes water and 10 adults weighting 80 kg each

\*\*Also offered in a 3 Phase configuration 380-415V, 3N-, 16A, 50Hz, Three Phase 16A/phase G.F.C.I protected circuit, other electrical configurations

\*\*\*Please check with local dealer on availability

## E-SERIES E700

E700	Swim	Swim & Treadmill
Dimensions	518 L x 226 W x 147 H cm	518 L x 226 W x 147 H cm
Water Capacity	8,140 litres	7,950 litres
Weight	1,375 kg (Dry) / 10,290 kg (Filled*)	1,430 kg (Dry) / 10,160 kg (Filled*)
Shell Colour Options	Alpine White or Ice Grey	
Cabinet Colour Options	Mocha or Grey	
Swim Technology	Hydrodrive™ Technology	
Swim Power Unit	5 HP Hydraulic Power Unit	
Hydromassage Seats	3	
Hydromassage Jets - 27	1 Large Jet, 2 Rotary Jets, 2 Directional Jets, 22 Mini Jets	
Hydromassage Jet Pump	2.5 HP Continuous Duty; 5.2 HP Breakdown Torque - 1 Speed Pump	
Control System**	LCD Control Panel 230V/50 Hz	
	2 x 24A	24A + 32
Water Feature	2 Illuminated Waterfalls	
Water Management System***	UVC + CD Ozone	
Effective Filtration Area	18 m <sup>2</sup>	
Lighting System	20 Multi-Colour LED Points of Light & Exterior LED Illumination Bar	
Substructure	2 mm Galvanised Steel Frame	
Base Pan Thermoformed	ABS Base Pan	
Energy Efficiency	EPS Foam + Reflective Film; Certified to the APSP 14 American Standard and the California Energy Commission (CEC) in accordance with California Law	
Music Option	8 Speakers + Subwoofer, Bluetooth® Enabled	
Base Pan	Thermoformed ABS Base Pan	
Heater	3000w/220 - 240v	
Energy Efficiency	Certified to the APSP 14 National Standard and the California Energy Commission (CEC) in accordance with California Law	

For the most up-to-date information, please visit [EndlessPools.co.uk](http://EndlessPools.co.uk).

All rights reserved. Specifications, colours, and surface materials subject to change without notice

\*Includes water and 10 adults weighting 80 kg each

\*\*Also offered in a 3 Phase configuration 380-415V, 3N-, 16A, 50Hz, Three Phase 16A/phase G.F.C.I protected circuit, other electrical configurations possible

\*\*\*Please check with local dealer on availability

## E-SERIES E2000

E2000	Swim	Swim & Treadmill
Dimensions	610 L x 226 W x 147 H cm	610 L x 226 W x 147 H cm
Swim Side:	457 L x 147 H x 226 W cm	457 L x 147 H x 226 W cm
Spa Side:	152 L x 93 H x 226 W cm	152 L x 93 H x 226 W cm
Water Capacity	8,900 Litres	9,065 Litres
Swim Side:	7,575 Litres	7,740 Litres
Spa Side:	1,325 Litres	1,325 Litres
Weight	1,915 kg (Dry) / 11,590 kg (Filled*)	1,860 kg (Dry) / 11,705 kg (Filled*)
Shell Colour Options	Alpine White or Ice Grey	
Cabinet Colour Options	Mocha or Grey	
Swim Technology	Hydrodrive™ Technology	
Hydraulic Power Unit	5.0 HP HPU	5.0 HP Tandem HPU
Hydromassage Seats	3	
Hydromassage Jets - 36	2 Large Jets, 2 Rotary Jets, 6 Directional Jets, 26 Mini Jets	
Hydromassage Jet Pump	2.5 HP Continuous Duty, 5.2 HP Breakdown Torque - 2 Speed Pump	
Control System**	LCD Control Panel 230V/50 Hz 24A + 32A	2 x 24A
Water Feature	2 Illuminated Waterfalls	1 Illuminated Waterfall
Water Management System***	UVC + CD Ozone	CD Ozone
Substructure	2 mm Galvanised Steel Frame	
Base Pan	Thermoformed ABS Base Pan	
Energy Efficiency	EPS Foam + Reflective Film; Certified to the APSP 14 American Standard and the California Energy Commission (CEC) in accordance with California Law	
Music Option	8 Speakers + Subwoofer, Bluetooth® Enabled	
	Swim Side	Spa Side
Seats	Bench Seat	4 Hydrotherapy Seats + Cool Down Seat
Effective Filtration Area	18 m <sup>2</sup>	5 m <sup>2</sup>
Lighting System	14 Multi-Colour LED Points of Light & LED Illumination Bar	12 Multi-Colour LED Points of Light

For the most up-to-date information, please visit [EndlessPools.co.uk](http://EndlessPools.co.uk).

All rights reserved. Specifications, colours, and surface materials subject to change without notice

\*Includes water and 10 adults weighting 80 kg each

\*\*Also offered in a 3 Phase configuration 380-415V, 3N-, 16A, 50Hz, Three Phase 16A/phase G.F.C.I protected circuit, other electrical configurations possible

\*\*\*Please check with local dealer on availability



## X-SERIES X500

X500	
Dimensions (L x W x H)	457 x 226 x 127 cm
Water Capacity	6,250 litres
Weight	1,230 kg (Dry) / 8,280 kg (Filled*)
Shell Colour Options	Alpine White or Ice Grey
Cabinet Colour Options	Mocha or Grey
SwimCross® Technology	3 round Swim Jets (top row): 757-850 litres per minute River Jet (bottom row): 614-682 litres per minute
Swim Jet Pumps	(2) 2.5 HP XP3 Continuous Duty, 5.2 HP Breakdown Torque
Hydromassage Seats	3
Hydromassage Jets - 27	1 Large Jet, 2 Rotary Jets, 2 Directional Jets, 22 Mini Jets
Hydromassage Jet Pump	2.5 HP Continuous Duty; 5.2 HP Breakdown Torque – Dual Speed Pump
Control System**	LCD Control Panel; 230V, 32A, 50Hz
Water Feature	2 Illuminated Waterfalls
Water Management System***	UVC + CD Ozone
Effective Filtration Area	18m <sup>2</sup>
Lighting System	Multi-Colour 16 LED Lights, Exterior LED Lighting (optional)
Substructure	2 mm Galvanised Steel Frame
Base Pan	Thermoformed ABS Base Pan
Energy Efficiency	Certified to the APSP 14 National Standard and the California Energy Commission (CEC) in accordance with California Law
Music Option	8 Speakers + Subwoofer, Bluetooth® Enabled

For the most up-to-date information, please visit [EndlessPools.co.uk](http://EndlessPools.co.uk).

All rights reserved. Specifications, colours, and surface materials subject to change without notice

\*Includes water and 10 adults weighting 80 kg each

\*\*Other electrical configurations possible

\*\*\*Please check with local dealer on availability

## X-SERIES X2000

### Lifter Options

X2000		
Dimensions	610 L x 226 W x 147 H cm Swim Side: 457 L x 226 W x 147 H cm Spa Side: 152 L x 226 W x 147 H cm	
Water Capacity	8,895 Litres (Swim Side: 7,570 Litres / Spa Side: 1,325 Litres)	
Weight	1,855 kg (Dry) / 11,710 kg (Filled*)	
Shell Colour Options	Alpine White or Ice Grey	
Cabinet Colour Options	Mocha or Grey	
SwimCross® Technology	3 round Swim Jets (top row): 757-850 litres per minute River Jet (bottom row): 614-682 litres per minute	
Swim Jet Pumps	(2) 2.5 HP XP3 Continuous Duty, 5.2 HP Breakdown Torque	
Substructure	2 mm Galvanised Steel Frame	
Base Pan	Thermoformed ABS Base Pan	
Energy Efficiency	Certified to the APSP 14 National Standard and the California Energy Commission (CEC) in accordance with California Law	
Music Option	8 Speakers + Subwoofer, Bluetooth® Enabled	
	Swim Side	Spa Side
Seats	Bench Seat	4 Hydrotherapy Seats + Cool Down Seat
Hydrotherapy Jets – 36	Not Applicable	2 Large Jets, 2 Rotary Jets, 6 Directional Jets, 26 Mini Jets
Hydromassage Jet Pump	Not Applicable	2 – 2.5 HP Continuous Duty; 5.2 HP Breakdown Torque – Single Speed Pumps
Control System**	LCD Control Panel 230v/48amp, 50Hz	LCD Control Panel
Water Feature	2 Illuminated Waterfalls	1 Illuminated Waterfall
Water Management System***	UVC + CD Ozone	CD Ozone
Effective Filtration Area	18 m <sup>2</sup>	5 m <sup>2</sup>
Lighting System*	14 Multi-Colour LED Points of Light * Exterior LED Lighting (optional)	12 Multi-Colour LED Points of Light

For the most up-to-date information, please visit [EndlessPools.co.uk](http://EndlessPools.co.uk).

All rights reserved. Specifications, colours, and surface materials subject to change without notice

\*Includes water and 10 adults weighting 80 kg each

\*\*Other electrical configurations possible

\*\*\*Please check with local dealer on availability

## R-SERIES R200

R200	
Dimensions	366 L x 226 W x 127 H cm
Water Capacity	5,054 Litres
Weight	837 kg (Dry) / 6,680 kg (Filled*)
Shell Colour Options	Alpine White or Ice Grey
Cabinet Colour Options	Mocha or Grey
RecSport® Technology	3 Swim Jets – Max 815 Litres Per Minute
Swim Jet Pump	2.5 HP Continuous Duty; 5.2 HP Breakdown Torque – Dual Speed Pump
Seats	5
Hydromassage Jets - 27	1 Large Jet, 2 Rotary Jets, 2 Directional Jets, 22 Mini Jets
Hydromassage Jet Pump	2.5 HP Continuous Duty; 5.2 HP Breakdown Torque – Dual Speed Pump
Control System**	LCD Control Panel, 230v/24amp, 50 Hz
Water Feature	1 Illuminated Waterfall
Water Management System***	CD Ozone
Effective Filtration Area	9 m <sup>2</sup>
Lighting System	20 Multi-Colour LED Points of Light, Exterior LED Lighting (optional)
Substructure	Wood
Base Pan	Thermoformed ABS Base Pan
Energy Efficiency	Certified to the APSP 14 National Standard and the California Energy Commission (CEC) in accordance with California Law
Music Option	8 Speakers + Subwoofer, Bluetooth®-Enabled

For the most up-to-date information, please visit [EndlessPools.co.uk](http://EndlessPools.co.uk).

All rights reserved. Specifications, colours, and surface materials subject to change without notice

\*Includes water and 10 adults weighting 80 kg each

\*\*Other electrical configurations possible

\*\*\*Please check with local dealer on availability

## R-SERIES R220

R220	
Dimensions	366 L x 226 W x 127 H cm
Water Capacity	4,090 Litres
Weight	805 kg (Dry) / 5,680 kg (Filled*)
Shell Colour Options	Alpine White or Ice Grey
Cabinet Colour Options	Mocha or Grey
RecSport® Technology	3 Swim Jets – Max 815 Litres Per Minute
Swim Jet Pump	2.5 HP Continuous Duty; 5.2 HP Breakdown Torque – Dual Speed Pump
Seats	9
Hydromassage Jets - 31	1 Large Jet, 2 Rotary Jets, 4 Directional Jets, 24 Mini Jets
Hydromassage Jet Pump	2.5 HP Continuous Duty; 5.2 HP Breakdown Torque – Dual Speed Pump
Control System**	LCD Control Panel, 230v/24amp, 50 Hz
Water Feature	1 Illuminated Waterfall
Water Management System***	CD Ozone
Effective Filtration Area	9 m <sup>2</sup>
Lighting System	15 Multi-Colour LED Points of Light, Exterior LED Lighting (optional)
Substructure	Wood
Base Pan	Thermoformed ABS Base Pan
Heater	3000w/230V
Energy Efficiency	Certified to the APSP 14 National Standard and the California Energy Commission (CEC) in accordance with California Law
Music Option	8 Speakers + Subwoofer, Bluetooth®-Enabled

For the most up-to-date information, please visit [EndlessPools.co.uk](http://EndlessPools.co.uk).

All rights reserved. Specifications, colours, and surface materials subject to change without notice

\*Includes water and 10 adults weighing 80 kg each

\*\*Other electrical configurations possible

\*\*\*Please check with local dealer on availability

## R-SERIES R500

R500	
Dimensions	457 L x 226 W x 127 H cm
Water Capacity	6,757 litres
Weight	932 kg (Dry) / 8,477 kg (Filled*)
RecSport® Technology	3 Swim Jets - Max 815 Litres Per Minute
Swim Jet Pump	2.5 HP Continuous Duty; 5.2 HP Breakdown Torque – Dual Speed Pump
Seats	5
Hydromassage Jets - 27	1 Large Jet, 2 Rotary Jets, 2 Directional Jets, 22 Mini Jets
Hydromassage Jet Pump	2.5 HP Continuous Duty; 5.2 HP Breakdown Torque – Dual Speed Pump
Control System**	LCD Control Panel, 230v/24amp, 50 Hz
Water Feature	1 Illuminated Waterfall
Water Management System***	CD Ozone
Effective Filtration Area	9 m <sup>2</sup>
Lighting System	20 Multi-Colour LED Points of Light, Exterior LED Lighting (optional)
Substructure	Wood
Base Pan	Thermoformed ABS Base Pan
Heater	3000w/230V
Energy Efficiency	Certified to the APSP 14 National Standard and the California Energy Commission (CEC) in accordance with California Law
Music Option	8 Speakers + Subwoofer, Bluetooth®-Enabled

For the most up-to-date information, please visit [EndlessPools.co.uk](http://EndlessPools.co.uk).

All rights reserved. Specifications, colours, and surface materials subject to change without notice

\*Includes water and 10 adults weighting 80 kg each.

\*\*Other electrical configurations possible

\*\*\*Please check with local dealer on availability



@endlesspools



@endlesspools



endlesspools



**RM-SPAS**

Chemin des Rottes 27  
1907 Saxon / Valais

E. [info@rm-spas.ch](mailto:info@rm-spas.ch)  
T. +41 27 746 64 00

[www.rm-spas.ch](http://www.rm-spas.ch)



**PERSONAL AND CONFIDENTIAL**

*This document contains trade secret, confidential and other proprietary information of Watkins Manufacturing Corporation. It is intended only for the use of the individual or entity to which it is addressed and contains information that is privileged and exempt from disclosure under applicable law. In no event shall any recipient of the information disclose, directly or indirectly, any of the information to any competitor of Watkins. Therefore, you are hereby notified that any dissemination, distribution or copying of the document is strictly prohibited.*