



# 2025

## PRODUCT KNOWLEDGE GUIDE

### 50HZ EDITION

# HOT SPRING FAMILY OF SPAS

Every retail salesperson knows that product knowledge is a vital part of being successful in this business. And what's even more critical is having the ability to select the right amount of information to share and knowing when to share it.

There are three Collections that make up the Hot Spring® Spas product portfolio – **Highlife®**, **Limelight®**, and **Hot Spot®**. Each Collection is designed with a specific strategy in mind, to appeal to a specific spa shopper. It is critical that we identify which spa shopper we are working with before diving into the specific details of any Collection.

What follows is a summary of the product strategy behind the Hot Spring family of spas and a review of the features and benefits that make each Collection valuable to consumers. Once you identify the needs of a customer, you can then best match them with the spa's features and benefits. Remember, it is always about **the customer**. It is your job to help them identify the hot tub that is right for them.



# TABLE OF CONTENTS

## HOT TUB

Product Strategy	4
Hot Spring Collections	5
Highlife Collection	6-7
Limelight Collection	8-9
Hot Spot Collection	10-11
Shell and Cabinet Colour Palette	12-13
Hydrotherapy	14
Energy Efficiency	20
Clean Water	24
Spa Control Systems	32
Legendary Quality	38
Sights & Sounds	42
Necessaries™	46

## COLD PLUNGE

Intro	52
Positioning	54
Product Strategy	56
Colour Palette, Features, Product Details	57-61

## RESOURCES

Product Specifications	62
HSS Video Quick Bits - QR Links	63



# ONE BRAND: THREE COLLECTIONS

*Hot Spring® Spas consists of three distinct Collections – Highlife®, Limelight®, and Hot Spot®.*

*Together they align to compose a “Good, Better, and Best” product offering strategy to meet the needs of all hot tub shoppers looking to make every day better!*





## HIGHLIFE COLLECTION

The Highlife Collection was designed for those who expect The Absolute Best Hot Tub Ownership Experience™. Like no other, its **exceptional design** and **intentional engineering** provide the **ultimate hydrotherapy experience**.

From its modern architectural design, innovative features, and powerful hydrotherapy system, our best-selling spa Collection is an ideal choice for customers who desire the very best. There are eight total models in the Collection, so there's a size and configuration for just about everyone.



## LIMELIGHT COLLECTION

The premium Limelight Collection provides **contemporary styling** with **best-in-class features** for design-focused spa customers. Its fresh look, clean lines, and unique lighting add beauty and ambiance to the spa user experience.

With six total models in the Collection, there are small, medium, large, and extra-large options with seating from four to seven bathers that will fit almost any space.



## HOT SPOT COLLECTION

The Hot Spot Collection is the convergence of **style**, **performance**, and **dependability**. It offers the quality and value you would expect from a Hot Spring spa, priced to fit your budget.

There are two large models for families and social use, one medium-size dual-lounge model, two smaller models for two to three users, plus a compact model for couples or individual use.



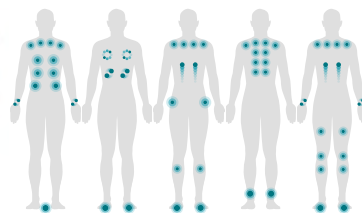
# HIGHLIFE® COLLECTION

## Lounge Models



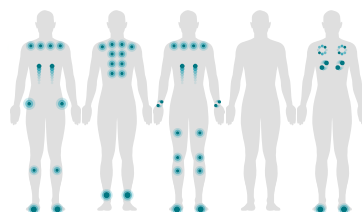
### ENVOY™

Seats 5 Adults  
55 Jets  
254 × 231 × 97 cm



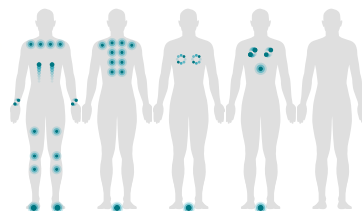
### ARIA™

Seats 5 Adults  
42 Jets  
221 × 221 × 91 cm



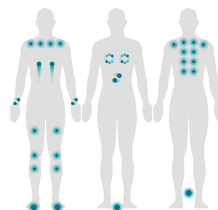
### SOVEREIGN™

Seats 5 Adults  
32 Jets  
203 × 236 × 84 cm



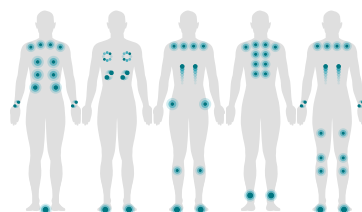
### JETSETTER™ LX

Seats 3 Adults  
30 Jets  
213 × 173 × 84 cm



### JETSETTER™

Seats 3 Adults  
22 Jets  
213 × 173 × 84 cm

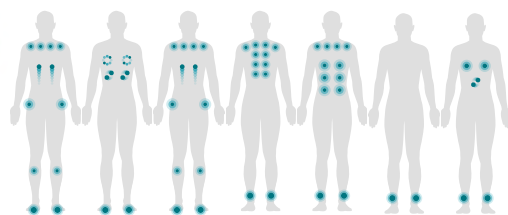


## Open-Seating Models



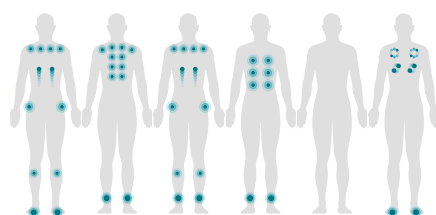
### GRANDEE™

Seats 7 Adults  
49 Jets  
254 × 231 × 97 cm



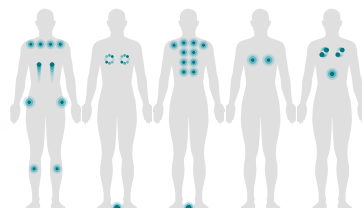
### VANGUARD™

Seats 6 Adults  
42 Jets  
221 × 221 × 91 cm



### PRODIGY™

Seats 6 Adults  
28 Jets  
213 × 198 × 84 cm





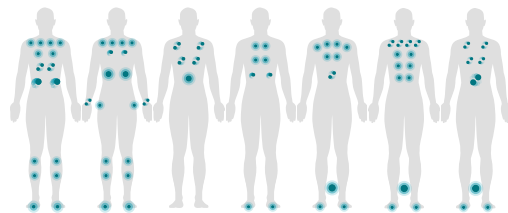
# LIMELIGHT® COLLECTION

## Lounge Models



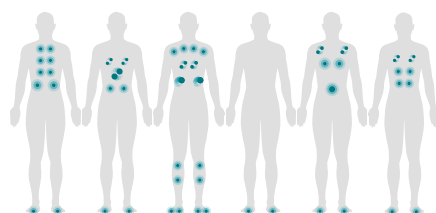
### PRISM™

Seats 7 Adults  
73 Jets  
279 × 231 × 97 cm



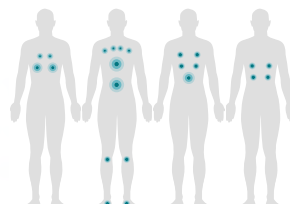
### FLAIR™

Seats 6 Adults  
43 Jets  
213 × 213 × 91 cm



### STROBE™

Seats 4 Adults  
23 Jets  
196 × 208 × 84 cm

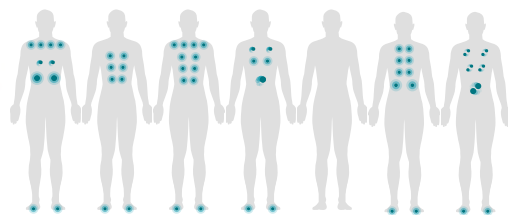


## Open-Seating Models



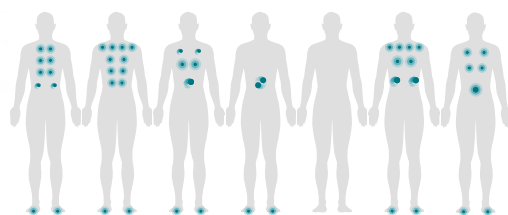
### PULSE™

Seats 7 Adults  
49 Jets  
226 × 226 × 97 cm



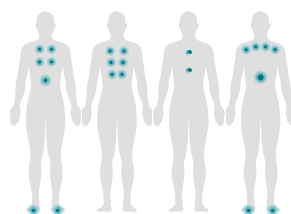
### FLASH™

Seats 7 Adults  
41 Jets  
213 × 213 × 91 cm



### BEAM™

Seats 4 Adults  
19 Jets  
203 × 203 × 84 cm





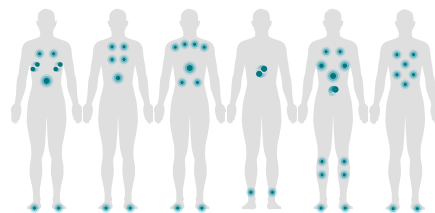
# HOT SPOT® COLLECTION

## Lounge Models



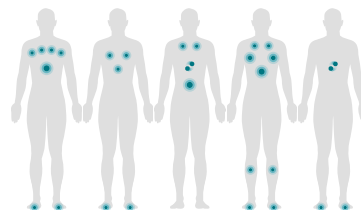
### RELAY™

Seats 6 Adults  
40 Jets  
213 × 213 × 91 cm



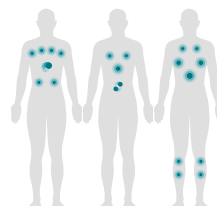
### PROPEL™

Seats 5 Adults  
24 Jets  
208 × 208 × 84 cm



### STRIDE™

Seats 3 Adults  
20 Jets  
213 × 165 × 74 cm



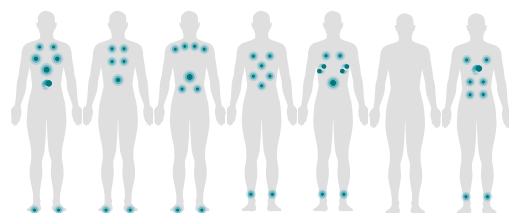


## Open-Seating Models



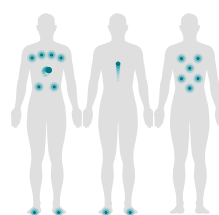
### RHYTHM™

Seats 7 Adults  
40 Jets  
213 × 213 × 91 cm



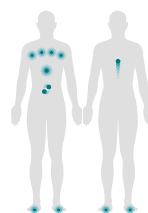
### SX

Seats 3 Adults  
18 Jets  
183 × 196 × 84 cm



### TX

Seats 2 Adults  
11 Jets  
183 × 183 × 74 cm



# COLOUR PALETTE

## Highlife® Collection

### CABINETS



Charcoal

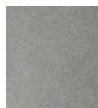
### SHELLS



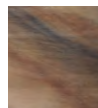
Alpine White



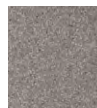
Ice Grey



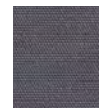
Platinum



Tuscan Sun



Pebble



Grey

### COVERS

WeatherPro™

### STEPS

Optional



Charcoal



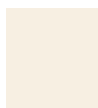
Java



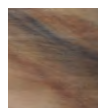
Alpine White



Ice Grey



Ivory



Tuscan Sun



Pebble



Storm



Java



Brushed Nickel



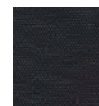
Alpine White



Ice Grey



Platinum



Black



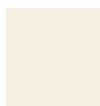
Blackwood



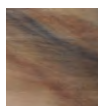
Linen



Alpine White



Ivory



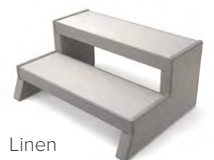
Tuscan Sun



Pebble



Shadow



Linen



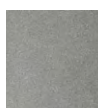
Blackwood



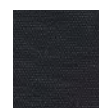
Alpine White



Ice Grey



Platinum



Black



Blackwood

## Limelight® Collection

### CABINETS



Espresso

### SHELLS



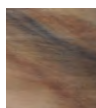
Alpine White



Ice Grey



Platinum



Tuscan Sun



Desert



Storm

### COVERS

WeatherPro

### STEPS

Optional



Espresso



Sable



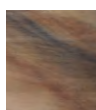
Alpine White



Ice Grey



Platinum



Tuscan Sun



Desert



Storm



Sable



Coastal Grey



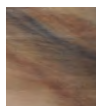
Alpine White



Ice Grey



Platinum



Tuscan Sun



Desert



Storm



Coastal Grey

## Hot Spot® Collection

### CABINETS

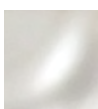


Havana

### SHELLS



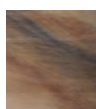
Alpine White



Pearl



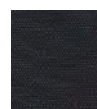
Pebble



Tuscan Sun

### COVERS

WeatherPro



Black

### STEPS

Optional



Havana



Almond



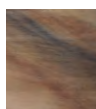
Alpine White



Pearl



Pebble



Tuscan Sun



Chestnut



Almond



Storm



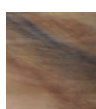
Alpine White



Pearl



Pebble



Tuscan Sun



Grey



Storm



# HYDROTHERAPY



## **Every Day Made Better®**

*For over four decades, Hot Spring® Spas has been perfecting the art of warm water massage. Each collection features precisely engineered jets and intuitive controls, all designed to deliver comfort, recovery, and renewed vitality with every soak.*

*Hot Spring hydrotherapy jets are thoughtfully positioned to target key muscle groups from the neck and shoulders to the back, calves, and feet. While jet types and placements vary by collection, they work in harmony to deliver the legendary massage experience that customers expect from a Hot Spring spa.*

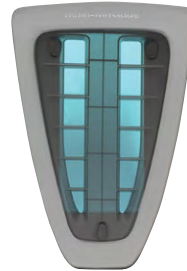
- Highlife® Collection Hydrotherapy
- Limelight® Collection Hydrotherapy
- Hot Spot® Collection Hydrotherapy

# HYDROTHERAPY

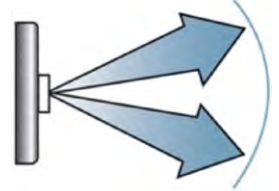
## Highlife Collection

Greater jet variety allows spa owners to experience targeted hydrotherapy as they move from seat to seat, giving them more ways to feel better. There are eight jet types used in the Highlife® Collection spas, creating a number of distinctive massages:

**MOTO-MASSAGE® DX** jets are an exclusive, patented design and a signature feature found throughout the Highlife Collection. Dual, powerful streams of water sweep up and down your back for a one-of-a-kind massage experience. This unique jet can be found in the back area of every lounge model, and the centrepiece of every Moto-massage seat. All dual jet pump models (Envoy™, Grandee™, Aria™, and Vanguard™) feature two Moto-Massage DX jets.



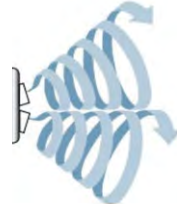
**FOOTSTREAM™** is the largest jet found in the Collection that provides a broad, powerful jet stream for a vigorous foot and lower body massage experience. A pair of Footstream jets are located at the base of each lounge model (single in Jetsetter™) plus up to three (Envoy) in the foot well of each model (except Jetsetter).



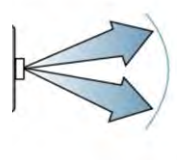
**SOOTHINGSTREAM™** jets provide a pulsating massage to your shoulders and upper back muscles. A pair of these jets are placed in the shoulder area of a dedicated seat in each Highlife Collection model.



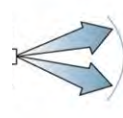
**HYDROMASSAGE ROTARY** jets deliver a broad, swirling jet stream that provides a vigorous kneading style massage for aching upper and lower back muscles.



**HYDROMASSAGE DIRECTIONAL** jets have a large adjustable nozzle that delivers a powerful, singular jet stream to provide a deep tissue back massage right where you need it. The 13 cm Directional jets are interchangeable with the Rotary and SoothingStream jets so you can customise your massage experience.



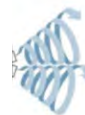
**HYDROSTREAM™** jets are medium-sized jets that deliver a vigorous jet stream that can be adjusted to provide a deep tissue massage to your back and hip areas.



**PRECISION™** jets are compact jets that work together in powerful clusters to relieve tension in your neck, shoulders, back, and calves.



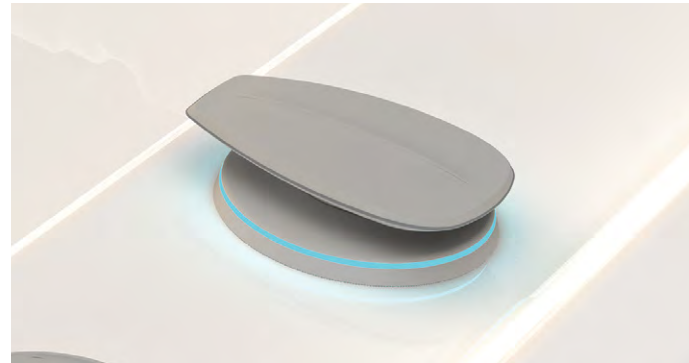
**PRECISION™ ROTARY** jets are small, pulsating jets, which are placed in the wrist area of each lounge model to provide a soothing hand, wrist, and elbow massage.





The SmartJet™ system allows users to focus the power of each WaveMaster™ jet pump to specific jet seats with the diverter valves, optimising jet performance and energy consumption.

With the Comfort Control™ system, users can adjust the water flow by turning the jet face and the massage intensity via the air valves located within comfortable reach from each respective seat, for a customised hydrotherapy experience.



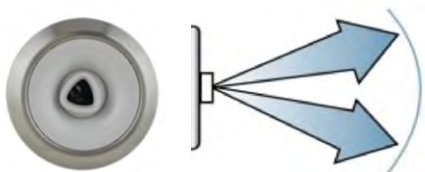
# HYDROTHERAPY

## Limelight Collection

Each Limelight® Collection spa model has many jets, in a variety of sizes, with nine types in total. Brushed stainless steel escutcheons with Harbor Grey jet bodies add to the modern styling. All the jets, except for the Precision™ jets and FootStream™ XL jet, are adjustable at the face.

**XL JETS** are the largest jets found in the Limelight Collection, each providing a powerful jet stream for a vigorous massage experience. Available in Directional, Single Rotary, and Dual Rotary.

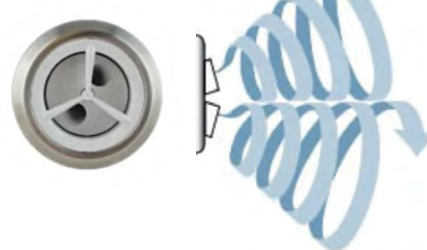
**XL Directional**



**XL Single Rotary**

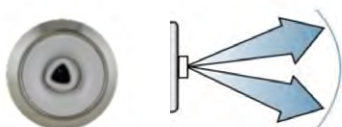


**XL Dual Rotary**



**STANDARD JETS** are medium-sized jets that deliver a variety of soothing massage actions. Available in Directional, Single Rotary, and Dual Rotary.

**Standard Directional**



**Standard Single Rotary**



**Standard Dual Rotary**

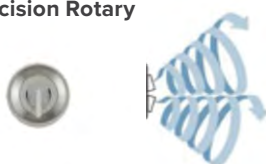


**PRECISION JETS** are compact jets that work together in powerful clusters to relieve tension in your neck, shoulders, back, calves, and feet. Both Directional and Rotary types are used throughout the Collection.

**Precision Directional**



**Precision Rotary**



---

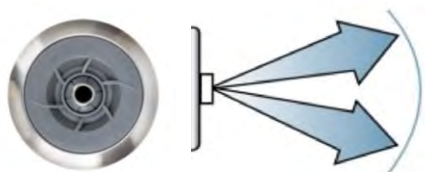
## Hot Spot Collection

The Hot Spot® Collection boasts six different types of jets: Moto-Massage® (single stream, available on the SX & TX models only), Directional Hydrotherapy Jet, Directional XL Hydrotherapy Jet, Rotary Hydrotherapy Jet, Rotary XL Hydrotherapy Jet, and Precision™ Jets. All the jets come with a charcoal grey body and brushed stainless steel escutcheons.

The Relay™ and Rhythm™ models offer **40 jets**; both models include foot well jets. The 24-jet, dual-lounge Propel™ model and the Relay also features calf and foot jets in the lounge.

**XL JETS** are the largest jets found in the Hot Spot Collection, each providing a powerful jet stream for a vigorous massage experience. Available in Directional, and Single Rotary.

**XL Directional**

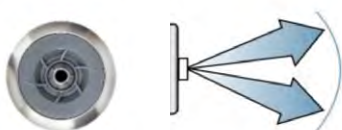


**XL Single Rotary**



**STANDARD JETS** are medium-sized jets that deliver soothing massage action in either Directional, or Single Rotary.

**Standard Directional**



**Standard Single Rotary**



**PRECISION JETS** is a compact Directional jet that works together in powerful clusters to relieve tension in your neck, shoulders, back, calves, and feet.

**Precision Directional**



**MOTO-MASSAGE** jet is an exclusive, patented design that provides a soothing single stream of water that sweeps up and down your back. This jet can be found in the SX and TX models.





# ENERGY EFFICIENCY



## **Save Energy, Save Money**

*Hot Spring® spas are designed to be the most energy efficient spas on the market. Several different features of the spa, which vary by Collection, work together as part of the Energy Smart™ system to achieve this energy efficiency. Each model is certified to the California Energy Commission (CEC) and APSP 14 energy efficiency standards for portable spas. Cutting corners in this area can save a manufacturer big money, but in doing so, they saddle their customers with a costly ownership experience. Our Energy Smart system consists of the following:*

- Hot Tub Insulation
- Jet Pump(s)
- SilentFlo 5000™ Circulation Pump
- No-Fault® Heater
- Energy-Saving Mode
- Sealing Thermal Cover

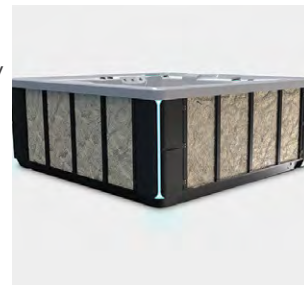
# ENERGY EFFICIENCY

## Hot Tub Insulation

### HIGHLIFE COLLECTION

Many spas today are “fully foamed” with polyurethane insulation. Often this 100% insulation is achieved with 8 kg/m<sup>3</sup> density open-cell foam, which has very little insulation value. Highlife® Collection spas are not just fully foamed, they are completely insulated with a multi-layered variety of polyurethane foams in different weights, each chosen for the following reasons:

- 480kg/m<sup>3</sup> foam is sprayed on key areas underneath the shell for structural support.
- 56 kg/m<sup>3</sup> foam totally encases the shell creating an important insulation layer.
- More 56 kg/m<sup>3</sup> foam is added to increase the spa's temperature retention.
- A small amount of 8 kg/m<sup>3</sup> foam gives the layers of heavier foam “breathing room” to expand over time.
- The final layer is a heavy-duty ABS base pan to prevent insect and moisture penetration. (More information on this base pan can be found in the “Legendary Quality” section)



### LIMELIGHT COLLECTION / HOT SPOT COLLECTION

Limelight® Collection and Hot Spot® Collection hot tubs are fully insulated with innovative FiberCor® insulation, applied at a 32 kg/m<sup>3</sup> density level – which is 4 times greater than 8 kg/m<sup>3</sup> foam used in most spas. Plus, it is entirely reusable, easily disposable and made from 25% recycled materials.



## SilentFlo 5000 Circulation Pump

### ALL HOT SPRING SPAS

The SilentFlo 5000™ circulation pump quietly provides continuous filtration and circulation, silently and efficiently filtering more than 19,000 litres of water per day. Continuous circulation helps to maintain a constant water temperature and limits the amount of energy output required by the heater. Nearly 80% of the energy used to run the pump is transferred directly into the water as heat energy, resulting in energy cost savings. The SilentFlo 5000 pump, a 40-watt design that is exclusive to Watkins Wellness®, is designed to be perfectly in tune with the flow rate of our heater and jet pump(s) – and costs less to power than a 40-watt light bulb.



## No-Fault Heater

### ALL HOT SPRING SPAS

Our exclusive No-Fault® design virtually eliminates heater failures due to water chemistry, which are often excluded from most competitive spa warranties. The heater housing and element sheath on all our Hot Spring® spas are constructed from materials that are corrosive resistant to extreme water care environments providing our customers with the peace of mind they deserve throughout the life of their spa. Because of its generous size (low-density design), the No-Fault heater lasts longer than most conventional heaters, while maximising the efficiency (nearly 100%) of heat transfer! It provides effective heating on 230-volt models, which is a much-needed and desired option for many shoppers.



## Energy-Saving Mode

### HIGHLIFE COLLECTION / LIMELIGHT COLLECTION

Energy-Saving Mode allows users to disable the heating function during on-peak hours when electricity rates are highest. Two independent, and predetermined times of day can be set for up to six hours each.



## WaveMaster Jet Pumps

### ALL HOT SPRING SPAS

Every Hot Spring spa features powerful WaveMaster® jet pump(s) to provide maximum water flow to the hydrotherapy jets for a vigorous massage. The WaveMaster jet pump is efficient and activates only when the jets are turned on.

## Sealing Thermal Cover

### ALL HOT SPRING SPAS

The spa cover is a critical part of the spa's heat-retention system. Our WeatherPro™ spa covers are meticulously designed, engineered, and manufactured by Watkins Wellness to fit your Hot Spring spa like a glove. They provide a custom, tight fit seal that prevents heat from escaping, which helps to keep your energy costs as low as possible. A thick insulated gasket running the entire length of the hinge helps prevent heat from escaping between the cover halves.

Combining the WeatherPro cover with one of our proprietary CoverCradle™, UpRite™ or Lift 'n Glide™ cover lifters, helps to seat the cover correctly every time to achieve that energy efficient seal. Our cover lifter systems also save wear and tear on the cover helping them to last longer.



CLEAN WATER



## **Less Maintenance, More Enjoyment**

*The ultimate hot tub experience starts with water that looks, feels, and smells amazing. Hot Spring® Spas makes it easier than ever to enjoy clean, crystal clear spa water, thanks to smart, innovative technologies that streamline water maintenance. From advanced filtration to intuitive water care systems, everything is designed to help keep your spa fresh and ready for your next soak.*

- FreshWater® IQ
- FreshWater Salt System
- 100% No-Bypass Filtration
- Tri-X™ Filters
- FreshWater® III Ozone System
- Vanishing Act™ & On-the-Go®
- CleanScreen™ Pre-Filter



# CLEAN WATER

**freshwater** IQ

ONE OF THE MOST INTELLIGENT SALT SYSTEMS ON THE PLANET



FreshWater® IQ is an in-line self-monitoring salt system that tells you what it needs to maintain clean, natural-feeling water, with less time and effort.

FreshWater IQ is the combination of the **FreshWater Salt System (FWSS)** and the new **Smart Monitoring Sensor (SMS)**.

Our patented smart monitoring technology, found only in the FreshWater IQ System is a result of 10 years of collaboration with Watkins, Masco Research & Development, and the University of Michigan. It automatically tests the spa water every hour and is more accurate and dependable than test strips. It then provides clear recommendations when adjustments are needed.



The Smart Monitoring System is a water quality diagnostic system that:

- Tests spa water hourly for: Chlorine, Salt, and pH levels.
- Diagnoses water quality.
- Provides recommendations to adjust Chlorine, Salt, and pH levels.
- Displays Monitoring System Sensor life and Salt cartridge life.
- Provides users access to water care readings via the topside control updated hourly.

The Smart Monitoring System will only work when the FreshWater Salt System is operational. Also, a few important reminders:

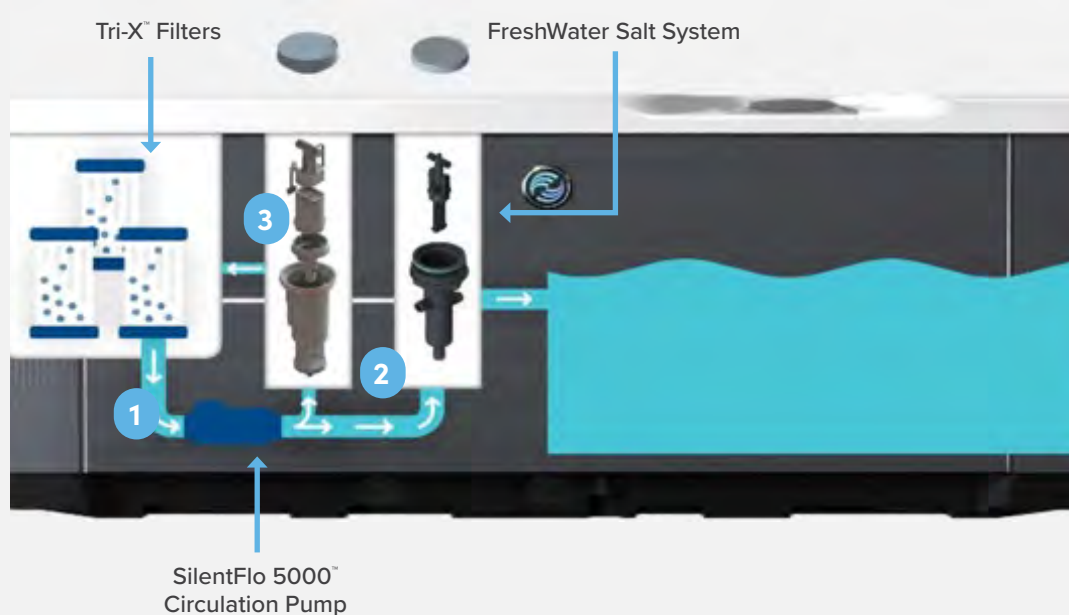
- FreshWater IQ is not an automatic water care system - it still requires the owner to make the adjustments.
- The Smart Monitoring System will not automatically control the Salt System operations or settings.
- The Smart Monitoring System is available on all HighLife® and Limelight® Collection models.

## HOW DOES THE MONITORING SYSTEM WORK?

- The Smart Monitoring System (SMS) is fully integrated into the spa's electrical and plumbing systems.
- The FWSS and SMS are two separate devices located in separate housings installed in the bar top.
- All Highlife and Limelight spas come "system-ready" with the T-handle wired to the control box and a non-functional shipping plug, that will need to be removed.
- To install the Smart Monitoring System, remove the shipping plug from the handle and replace it with the Controller and Sensor, which comes pre-assembled in the Monitoring System Start-up Kit (80201FW).



### FreshWater IQ Integration on Highlife Collection Models



- 1 Water is drawn through Tri-X filters by the SilentFlo 5000 circulation pump, fed through the FWSS housing and then returned to the spa.
- 2 Small bleed line runs from circulation pump to the SMS housing to test and diagnose chlorine, salt, and pH levels.
- 3 Bleed line runs from SMS housing to filter bucket.

# CLEAN WATER



The FreshWater® Salt System is an affordable and easy-to-use water care system that eliminates the worry of maintaining sparkling clean and natural-feeling soft spa water without requiring a drain and refill for 12 months.\*

All Highlife® Collection spas include the FreshWater Salt System, whereas all Limelight® and Hot Spot® Collection spas are system ready, requiring the FWSS start-up kit.

The FreshWater Salt System introduced an industry-first, fully integrated and user-accessible, in-line design that delivers on our brand promise of Every day made better® through better water that is simply easier for all. The system requires very little time and maintenance, uses fewer chemicals so there's no harsh side effects and preserves spa water for up to a full year.\*

When combined with the Smart Monitoring System and our other water care exclusives such as 100% no-bypass filtration and Tri-X™ filters, you get the cleanest spa water possible.

Comprised of factory-installed spa components, integrated spa control software, a start-up kit and aftermarket replenishment parts, the FreshWater Salt System is unlike anything else on the market today. All Limelight Collection and Hot Spot Collection spas come pre-plumbed with the housing, cap, and shipping plug - to be replaced with a FreshWater salt cartridge. Highlife Collection spas come with FreshWater Salt as a standard feature, which includes a factory-installed salt controller, FreshWater salt cartridge, Owner's Manual, and Quick Start Guide.

Limelight Collection and Hot Spot Collection spas require the purchase of the FreshWater Salt start-up kit, which includes a single cartridge, 4.5 kg bag of salt, system controller, salt test strips, Freshwater 5-way test strips, Owner's Manuals, and Quick Start Guide.



## HOW DOES THE FRESHWATER SALT SYSTEM WORK?

- The titanium electrodes in the cartridge work with the salt in the water to automatically generate chlorine and keep the water crystal clear. It doesn't require additional chemicals to sanitise the water, so the water feels soft, natural, odour-free, and lasts longer.
- The disposable cartridge lasts four months and does not require any maintenance.
- The spa display will prompt the spa owner to check the spa water every 10 days adjusting the output level if needed, and if not equipped with the Smart Monitoring System, manually testing the water using the FreshWater 5-way test strips.
- The spa display will also let the spa owner know when the cartridge has reached its end of life, which can easily be replaced by the owner in less than a minute.



## KEY ADVANTAGES

- Patented technology in-line design and user serviceability allow the spa water to truly be Always Hot and Ready to use.
- Maintenance-free, low-cost cartridge for simple and reliable chlorine generation.
- Easy cartridge replacement from the bar top with no need to disconnect wires, drain or call for a service technician.
- Convenient, predictable, and disposable cartridge that lasts four months.
- Replacement cartridges sold in a convenient 3-pack to provide a one-year supply of water care.
- Proprietary cartridges will only be sold through the specialty retail market, driving aftermarket sales.
- System is integrated with the spa control panel and plumbing for convenient and reliable operation.
- The instructions on the spa's control panel indicate when the salt system needs attention and what steps to take, which eliminates the guesswork.
- With fewer additives needed, the water stays cleaner longer and doesn't need to be drained and refilled for 12 months\*. This helps to conserve water, reduce maintenance effort, and lower operating costs.

\*Cartridge life and water life are dependent upon the condition of the fill water, and the proper treatment for calcium hardness, metals, and phosphates. Note: FreshWater Salt System is only compatible with 2018 or newer Highlife Collection and Limelight Collection spa models.

# CLEAN WATER

## 100% No-Bypass Filtration

### HIGHLIFE COLLECTION

In other spa brands, bypass fittings located in the foot well or filter compartment allow water to be taken directly back to the pump without passing through the filter. This means unfiltered water is re-entering the spa. In addition, many spas are designed with multiple jet pumps but provide only one or two filters, meaning even more water is being bypassed around the filtration system. It could be described as too much pump, not enough filter.

Highlife® Collection spas ensure that every drop of water must pass through the filter before it re-enters the spa through the jets. Each jet pump has two inlets, which are located below the filter standpipes. Highlife Collection multi-filter cartridge design ensures that all the water is filtered, not just some of it. It also assures the user that the inlets are out of harm's way, an additional safety feature. For a Highlife Collection owner, 100% no-bypass filtration means cleaner water, and an easier ownership experience. This system is constantly at work, it never postpones cleaning your water.

Our multiple-filter design not only makes water care easier, but it also extends the life of the filters, saving the customer money over the life of the spa. Because only one filter works all the time, if you rotate them like tires on a car, they should last 3-5 years! - Learn More by using the QR Code found on Page 63.

## Tri-X Filters

### HIGHLIFE COLLECTION

The exclusive Tri-X™ Filter redefines “crystal clear water”, taking filtration to a new dimension. One Tri-X Filter cartridge represents 6 square metres of filtration area - that's more than twice the effective cleaning area of a similarly sized cartridge.

The total effective cleaning area in the Highlife Collection Grandee™, Envoy™, Aria™ and Vanguard™ spa models (with 5 filters in each model) measures square metres. The Sovereign™, Prodigy™, Jetsetter™ LX and Jetsetter™ spa models (with 3 filters in each model) measures 18 square metres. That's easily the most filtration in any portable spa on the market! The larger cleaning area (6 square metres per element) allows the filters to work longer before needing to be cleaned.

Tri-X Filters are easy to clean. If you choose, you can just rinse them off with a hose or run them through your dishwasher (TIP: no soap and no dry cycle). The filter will last longer because of its durable design, so it's one less thing to think about.

Tri-X Filters also make spa operation easier on the pumps because they only draw water that has been filtered first. With cleaner water and a long-lasting pump, spa owners will save time and money.



### LIMELIGHT COLLECTION

Limelight Collection spas feature a two-filter system for constant and more effective water filtration.

The first filter is connected to the SilentFlo™ 5000 circulation pump, which provides, quiet and continuous 24-hour filtration. The second filter is connected to the WaveMaster® jet pump to clean water when you need it most. Two independent filters working together provide total, more effective filtration to help keep the spa water cleaner with less maintenance. The simple, top-loading design allows for easy access for filter cleaning.



## FreshWater III Ozone System

### LIMELIGHT COLLECTION / HOT SPOT COLLECTION

The FreshWater® III Ozone System is available as an alternative\* to the FreshWater Salt System on Limelight Collection spa models, and Hot Spot Collection spas.

The FreshWater III Ozone System uses Corona Discharge cell technology to continuously generate extremely high levels of ozone. Unlike UV bulb or CD chip systems, it functions efficiently for years with virtually no maintenance required and is far more powerful.

\*Important: FreshWater III Corona Discharge Ozone, or any other type of ozone generator is not compatible with the FreshWater Salt System or the Smart Monitoring System. Please check your dealer for availability.



## Vanishing Act & On-the-Go

### SOFTER WATER

Maintaining the recommended calcium hardness level in a spa with the FreshWater Salt System is critical. The hardness level should be maintained at 50 ppm to minimise scaling on the cartridge titanium electrodes. Use the Vanishing Act™ calcium remover or the On-the-Go® portable water softener to remove needed calcium hardness.

- Vanishing Act is used in areas where calcium hardness is between 75-150 ppm. Use the Vanishing Act XL for larger spas over 1,500 litres of water capacity.
- On-the-Go portable water softener is used in areas where calcium hardness is over 150 ppm.



## CleanScreen Pre-Filter

### METAL REMOVER

For sparkling clean water, and proper set-up for the FreshWater Salt System, metals must be removed from the fill water. The CleanScreen™ Pre-Filter can simply be attached to an ordinary garden hose to remove the organic contaminants, metals like copper and iron, and tannins from your water while filling your spa.





# IQ 2020™ CONTROLS



## READY, SET, RELAX

*Hot Spring® Spas are designed to make relaxation simple. Intuitive control panels allow for easy adjustments, while the sleek, glowing On/Ready indicator light shows at a glance when the spa is powered on and ready to enjoy. These thoughtful, user-friendly touches elevate the experience, making it effortless to unwind, any time.*

- Control Panels
- On/Ready Indicator Logo Light

# IQ 2020™ CONTROLS

## Highlife Collection

### FULL COLOUR LCD TOUCHSCREEN CONTROL PANEL

Our wired LCD touchscreen control features a brand-new user interface that provides Highlife® owners with more information and greater control over spa functions. Using innovative touchscreen technology, this advanced control panel provides a series of simple and easy-to-navigate, full-colour menus to adjust temperature settings, monitor water quality, and control lighting and music (if installed) when entertaining in the garden.



#### Key benefits and features of this new control panel include:

- Real-time Clock that enables several new capabilities that include:
  - **Energy Saving Mode** that disables the heating function during on-peak hours when electricity rates are highest.
  - **Soak Timer** allows users to set their desired soaking time that will alert them when time is up.
  - **Auto Clean Cycle** that activates a pre-determined cleaning cycle.
- Enhanced Lighting Control gives users more control of lighting zones by touching any of the individual zones on the screen to select light colour, adjust brightness, and set timers.
- Faster Flip Screen allows users to quickly invert the display and back again.
- Model Info provides easy access to model and firmware information.





---

## Limelight® Collection

### FULL COLOUR LCD CONTROL PANEL

The control panel is sleek and elegant in its design and provides unparalleled functionality. Spa owners learn how to operate this control panel in under a minute.

- Features an easy to read 8.9 cm high-resolution, colour LCD screen.
- Located on the bar top, for convenient access to controls from inside or outside the spa.
- Four outer “hard” buttons that have dedicated functions: Jets, Lights, Options and Back
- Four interior “soft” buttons (closer to the screen), that activate functions as they appear on screen.



### Full Colour LCD Control Panel Intuitive Menus

The control panel menus are designed to make navigating all spa functions easy. Here are some key benefits owners will enjoy:

- Hard button shortcuts make it easy to access the most commonly adjusted functions – the jets and the lights.
- Spa settings, such as Set Temperature and Summer Timer, are simple to find via the Options hard button.
- From any screen, press the Back hard button twice to return to the Home Screen
- Convenient access to the Automatic Clean Cycle from the Home Screen
- Lit icons indicate current spa status including Power, Ready, Jets, and Lights
- Actual spa temperature display on control panel Home Screen
- 41°C set temperature capability.
- Quick access to music menus when the wireless sound system is installed.
- Memory function allows spa owners to save personalised spa settings.

---

## Hot Spot Collection

### MONOCHROMATIC LCD CONTROL PANEL

The Hot Spot control panel features a 76 mm monochromatic LCD screen– the largest in the industry for a value segment spa panel – allowing for larger fonts, icons, and commands. Convenient Jet and Lights buttons are part of an easy-to-use menu interface.



# IQ 2020™ CONTROLS

## On/Ready Indicator Logo Light

### HIGHLIFE COLLECTION

The Highlife® Collection Logo Light is like the badge found on luxury automobiles and is the perfect accent to these spas. Centred on the front cabinet panel and trimmed with a brushed stainless steel accent ring, the 3D logo light prominently displays the spa's status with large diagnostic indicator lights incorporated into the Hot Spring logo. The On/Ready indicator light allows owners to easily see that the spa has power (blue) and is at the desired set temperature (green).

A built-in photosensor automatically controls the brightness of the logo light.



Teal top swirl indicates spa is at temperature and ready to use.



Flashing Yellow outer ring indicates the spa needs attention.



Flashing Red light indicates spa has entered Protection Mode.



## LIMELIGHT COLLECTION

The Limelight® Collection logo light is like that on Highlife models and provides diagnostic information. The lit colour bar on the left side of the logo light features four different colours to show what level of attention the hot tub may need. This will be accompanied by a short message on the control panel for more details.

- Green** = The spa is ready to use.
- Yellow** = The spa is safe to use. However, an optionally installed feature may need attention – such as FreshWater® Salt System, CoolZone®, or the music system.
- Red** = Contact the dealer. Share the information shown on the control panel with the dealer to determine what's needed.
- White** = The logo light is not communicating correctly to the control box.





LEGENDARY QUALITY



## **Built to Last**

*The Hot Spring® brand is synonymous with quality and lasting performance. With durable materials, thoughtfully engineered frames, and precision construction, each spa is built to deliver comfort and reliability for years to come. It's the kind of quality that has made Hot Spring the world's best-selling spa brand, trusted by more people to bring wellness and vitality home.*

- Highlife® Collection Features
- Limelight® & Hot Spot® Collection Features

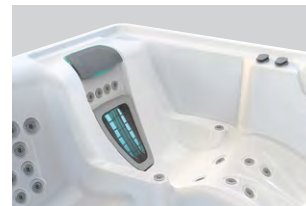


# LEGENDARY QUALITY

## Highlife Collection

### ABS BACKED SHELL

Highlife® Collection spas feature beautiful acrylic shells that are co-extruded with impact-resistant ABS backing to ensure strength – a superior, more consistent process than traditional fibreglass backing. Select from a variety of shell colours and finishes to match any outdoor décor. The shell is offered in Alpine White, Ivory, Ice Grey, Tuscan Sun, Platinum, and Pebble.



### CABINET

The Highlife Collection has a clean, linear architectural exterior. Simpler graphics and fewer panels contribute to a timeless look for broader customer appeal. Cabinets are constructed from custom materials that combines the colours, finishes and textures of woods and stainless steel accents with the durability and weatherability of tough polymer plastic—resulting in a low-maintenance cabinet that saves the owner time and will look beautiful for years. The Highlife cabinet is available in Charcoal, Java, Brushed Nickel, Blackwood, and Linen.



### ARCHITECTURAL MOLDED CORNERS

Unique molded corners provide elegant architectural styling as the lines of the corner meet the panel edges and lines of the shell. Each corner features an intricate texture that adds depth and dimension and is molded in shades that complement the siding options. The cabinet and corner colour combinations are as follows:

- Blackwood cabinet – Blackwood corner
- Brushed Nickel cabinet – Blackwood corner
- Charcoal cabinet – Smoke corner
- Java cabinet – Java corner
- Linen cabinet – Linen corner



### POLYMERIC SUB-STRUCTURE

The polymeric sub-structure provides structural support, while making it possible to achieve the distinctive floating effect that separates Highlife Collection spas from the rest. The polymeric sub-structure frame also increases durability and helps preserve fit and finish after years of ownership. It will never rust or rot.



### POLYMERIC BASE PAN

Made from heavy-duty ABS, the base pan is recessed diagonally at each corner to create the illusion that the spa is standing on its corners. In addition to preventing moisture from getting into the bottom of the spa, the base pan is engineered with “ribs” that help increase energy efficiency by minimising contact with the ground.

### QUICK RELEASE REMOVABLE CABINET PANELS

The side and back cabinet panels use quick-release clips for easy removal without tools. Simply grasp the bottom of the panel, pull it away from the frame to release from the clips and the panel comes free. To re-install, slide the top of the panel under the bar top, then firmly push the bottom of the panel to snap the clips back together. The front equipment door on the Highlife Collection spas include small ledge clips on the bottom that must be loosened.



---

## Limelight Collection

### EVERWOOD CABINET

Limelight® cabinets are constructed of exclusive Everwood™ siding. This custom material combines the beauty of real wood with the durability and weatherability of tough polymer plastic – resulting in an easy-care cabinet that saves the owner time and looks beautiful for years.

The long horizontal planks of varied widths on the Limelight Collection exterior are both visually appealing and complementary to outdoor furniture design trends. The look is simple and distinctly modern.

The Everwood cabinet on Limelight Collection spas is available in Coastal Grey, Espresso, and Sable.



### QUICK RELEASE REMOVABLE CABINET PANELS

As with the Highlife Collection, the side and back cabinet panels use quick-release clips for easy removal without tools. Simply grasp the bottom of the panel, pull it away from the frame to release from the clips and the panel comes free. To re-install, slide the top of the panel under the bar top, then firmly push the bottom of the panel to snap the clips back together. The front equipment door on the Limelight Collection spas is held in place with colour-matched screws.

---

## Hot Spot Collection

### EVERWOOD CABINET

As with the Limelight Collection, Hot Spot® cabinets are constructed of exclusive Everwood siding. This custom material combines the beauty of real wood with the durability and weatherability of tough polymer plastic – resulting in an easy-care cabinet that saves the owner time and looks beautiful for years.

The clean and contemporary, wide-format panels on the Hot Spot spas are available in Almond, Havana and Storm – all featuring streaking and a detailed embossing pattern for a striking visual appeal.



### DELIVERY AND SERVICE-FRIENDLY FRAME & DOOR

Designed with our dealers in-mind, the Hot Spot frames now include a 2.5 cm gap below each cabinet panel for better grip when moving and delivering the spas. The equipment door is service-friendly with removable “Z” parts, held by only three screws, and a single panel cabinet held with clips. Remove the Z-parts, lift the panel up under the bar top to disengage the clips and remove the panel.

# SIGHTS & SOUNDS



## Set the Mood

*Hot Spring® Spas are designed to engage the senses. With colourful lighting inside and out, plus soothing water features that add gentle sound and movement, every detail works together to create a calming, immersive environment that enhances relaxation and elevates the spa experience.*

- Highlife® Collection Lighting & Water Features
- Limelight® Collection Lighting & Water Features
- Hot Spot® Collection Lighting & Water Features



# SIGHT & SOUNDS

## Highlife Collection

### FOUR-ZONE LUMINESCENCE™ LIGHTING SYSTEM

The unique Highlife® Collection spas lighting system allows customers to customise their spa experience and create a lighting scheme that matches their mood.

#### The four lighting zones are:

1. Underwater Lighting: *standard spa light and Moto-Massage® jet lighting*
2. Bar Top Lighting: *diverter valves, and speaker pedestal*
3. Pillow Lighting
4. BellaFontana™ Lighting

#### Control lighting using the main control panel:

- Independent on/off control of all lighting zones
- Independent colour control of zones above and below the water line
- If the colour wheel is activated above and below the water line, the zones will automatically sync

### EXTERIOR LIGHTING ZONE

Highlife Collection spas feature dramatic exterior lighting zones with multi-colour LED lights to illuminate the spa at each corner, casting a soft glow onto the ground below. The exterior lighting is controlled independently and can be adjusted for colour and brightness. Set the lights to automatically turn on and off at the same time each evening to create a beautiful focal point in the garden.

### BELLAFONTANA™ WATER FEATURE

This water feature creates three elegant backlit arches of water – a beautiful fountain that can be enjoyed from inside or outside the spa.



---

## Limelight Collection

### RAIO LIGHTING SYSTEM

The interior lighting system features multiple points of light in a mix of three lens sizes placed within the spa interior to accent the shell contours. Match the colour to your mood, selecting the hue and brightness of your choice, from serene to energetic. Or, for a more playful experience, set the lights to slowly cycle through all six vibrant colours.

LED corner lighting is integrated into the front corners as full-length light bars behind frosted acrylic diffusers that deliver a beautiful, even glow. No other hot tubs make such a statement. Owners can choose from one of six different colours or wheel through each colour. They can also be adjusted to three different brightness levels.

### VIDRO WATERFALL

This waterfall, backlit by multicolour LED lighting that changes with the Raio™ lighting system, delivers a beautiful arching sheet of water that flows smoothly into the Limelight® Collection hot tubs. Use the conveniently located valve to control the intensity or turn off the Vidro™ waterfall.



---

## Hot Spot Collection

### LIGHTING SYSTEM

Relay™, Rhythm™ and Propel™ spa models include 10 multi-colour interior LED points of light, strategically positioned to provide a soft glow to the water. Four lights in the footwell light the interior, while six lights located just above the water line create a reflection that increases their visual impact. Stride™ and SX models have six points of light, while the TX model has four points of light. The Relay, Rhythm, Propel, and Stride also include four multi-colour exterior LED points of light – one in each of the two “canyons” per front corner.

The spa user can enjoy any of six colours or use the colour wheel, along with a 3-step dimming feature, on both the interior and exterior lighting.

### WATER FEATURE

The Rhythm, Relay and Propel models include a beautiful arching sheet of water.

Note: The Hot Spot® water feature does not illuminate.





# NECESSARIES™





## Enhance the Spa Experience

*A range of thoughtfully designed accessories are available to personalise any Hot Spring® spa. From wireless audio systems to colour coordinated steps and a range of cover lifters for added convenience, these enhancements are crafted to elevate safety, enjoyment, and ease.*

- Wireless Audio System
- Cover Lifters
- Spa Steps

# NECESSARIES™

## Wireless Audio System

The Wireless Audio System with Bluetooth® technology is an option for all Highlife® Collection, Limelight® Collection and Hot Spot® Collection spas\*. It's wireless, so there's no need to cut into the spa cabinet and it pairs easily with Bluetooth technology-enabled audio devices. The Wireless Audio System has several value-added features that your customer should know about before making their final decision.

- Utilise any Bluetooth technology enabled source device as a remote with track control and separate volume adjustment.
- View the song title and artist on the spa control panel (varies based on spa model and audio source).
- Enhance the audio quality by adding in the optional subwoofer located in the equipment compartment. Subwoofer is not available on the Jetsetter LX and Jetsetter models.
- Fine-tune audio settings through the spa's main control panel like treble, bass, balance, and subwoofer volume.

\*Note: The Wireless Audio System is factory-installed on the Relay, Rhythm and Propel Hot Spot music-ready models only. Music is not available on the Stride, SX and TX models. The Wireless Audio System is an accessory, dealer-installed item for the Highlife Collection and Limelight Collection models.

The Bluetooth word mark and logos are registered trademarks owned by Bluetooth SIG, Inc and any use of such marks by Watkins Mfg. Corp is under license. Other trademarks and trade names are those of their respective owners.



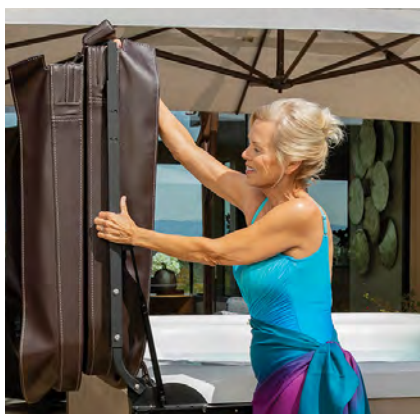
## Cover Lifters



### COVERCRADLE AND COVERCRADLE II COVER LIFTERS

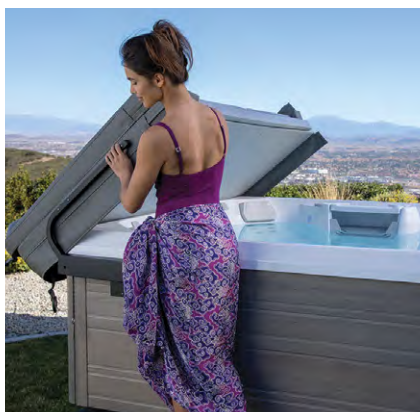
These exclusive cover lifters were designed specifically for our WeatherPro™ covers making it quick and easy to remove and replace even the largest spa cover. The top-of-the-line CoverCradle™ lifter features a low-profile design and ultra-smooth gliding mechanism. Dual pneumatic gas springs in the arms of this lifter make cover removal a breeze.

Similar in design to the original CoverCradle, the CoverCradle II uses a single pneumatic gas spring to allow smooth operation. CoverCradle and CoverCradle II cover lifters require 61 cm of clearance behind the spa.



### UPRITE™ COVER LIFTER

This system lifts the cover over the spa bar top. It is ideal for limited clearance applications such as decks and gazebos. Requires only 18 cm clearance.



### LIFT 'N GLIDE™ COVER LIFTER

Just lift and glide your cover off with this economical cover lifter. Requires 36 cm clearance.

Note: Actual clearance may vary depending on spa model and location.



# NECESSARIES™

## Spa Steps

What hot tub experience would be complete without a complementary step for safe entry? Just like doors in a car, we recommend at least two (2) points of entry to your spa. Hot Spring® Spas offers exclusive cabinet colour and material matching steps to make it easy for owners to enjoy their Hot Spring spa as often as possible.

### HIGHLIFE STEPS

Highlife® Steps are designed to match the modern and elegant design of the Highlife Collection cabinet and corners. The step endcaps and colours, directly match the look and colours of the spa corners. A textured tread provides traction for a highly functional, must-have Highlife accessory.



### EVERWOOD STEPS - LIMELIGHT

Our elegant and durable synthetic spa steps are designed to complement the Limelight® Collection cabinet profiles and provide an unparalleled colour match. These sturdy steps provide a safe way to enter and exit the spa. Your customers have chosen the best hot tub available make sure they know they can add a matching Limelight Everwood™ step in Coastal Grey, Espresso, and Sable to complete the package.



### EVERWOOD STEPS - HOT SPOT

For Hot Spot® Collection spas, we have Everwood Steps that match the two-panel cabinet design, texture and colours (Almond, Havana and Storm).



### POLYMER STEPS

For the value-minded shopper, the durable and affordable, polymer steps are available in Black, Sable, Teak, Grey and Espresso.



## Side Enhancements



### HAND RAIL

This handrail's base plate slips securely under the spa cabinet for stability, and swings in and out of your spa — making it easy to reach when entering or exiting the spa. It also features a battery powered LED light for added convenience and safety at night.



### TOWEL TREE

Keep your towel within reach with this easy-to-assemble towel tree, constructed from powder aluminum with a bronze finish that makes a stylish and convenient addition to your backyard.



### SIDE UMBRELLA

Bring shade to your spa with the 360° rotatable spa side umbrella. Constructed from powder coated aluminium and zinc-plated steel, this umbrella is rust-resistant with a base plate under the spa cabinet for stability.

INTRODUCING  
THE VIGOR™  
COLD PLUNGE





## **The Next Evolution of Hot Spring Wellness**

*For more than 45 years, Hot Spring® Spas has been the trusted leader in warm water wellness, delivering industry-leading quality, innovation, and performance. Now, we're bringing that same expertise to cold water wellness with the Vigor™ Cold Plunge. Built with the same precision and craftsmanship as our best-selling Highlife® Collection at our state-of-the-art manufacturing facility, Vigor delivers an unmatched cold plunge experience.*

*Guided by our Good, Better, Best product philosophy—represented by our Hot Spot®, Limelight®, and Highlife® Collections—Vigor™ extends our legacy of premium hydrotherapy solutions, ensuring customers find the right fit for their wellness journey. As the most trusted name in warm water wellness, Hot Spring® is expanding its legacy with the Vigor™ Cold Plunge—the next evolution in our commitment to performance, innovation, and total body wellness.*

# VIGOR COLD PLUNGE



## Better Water

### SIMPLIFIED WATER CARE FOR COLD THERAPY

Water care has always been a defining strength of Hot Spring®, and with Vigor™, we've taken a smart, simplified approach tailored for cold plunging. The built-in UVC water treatment helps reduce the need for excess chlorine, keeping the water fresh and clean with minimal effort. Since cold plunges typically see fewer bathers for shorter durations, water stays cleaner longer, requiring less frequent drain-and-refill cycles. This means Vigor owners get the same trusted water care innovations in a way that's optimised for cold immersion.



## Better Energy

### ENGINEERED FOR EFFICIENCY AND PERFORMANCE

Just as in our hot tubs, energy efficiency is at the core of Vigor's design. Our comprehensive insulation system, including strategic placement of insulation between the pump and water to minimise heat transfer, a sealed bottom, and a WeatherPro™ insulated cover, ensures optimal cold retention and energy savings.

For users seeking ultimate performance, our integrated heat pump guarantees precise cold temperatures, delivering the consistency and reliability Hot Spring is known for.



## Better Quality

### BUILT TO LAST, BACKED BY DECADES OF EXPERTISE

Vigor isn't just another cold plunge—it's a Hot Spring cold plunge, crafted with the same commitment to quality and innovation that has made us the industry's leading hot tub brand. Built on the Highlife® Collection line, Vigor benefits from the same advanced manufacturing techniques, premium materials, and rigorous quality control that define our spas.

Every detail, from the high-grade shell construction to the ergonomic design and intuitive controls, reflects the same meticulous engineering that customers expect from Hot Spring. Designed for durability and ease of use, Vigor is made to deliver years of reliable performance—whether used as a dedicated cold therapy tool or as a complement to hot tub hydrotherapy.



## VIGOR

### THE NEXT EVOLUTION OF WELLNESS FROM HOT SPRING

By bringing together our expertise in Better Water, Better Energy, and Better Quality, we've created a cold plunge that stands apart in the market. Whether for recovery, performance, or overall well-being, Vigor offers trusted reliability, innovative engineering, and premium experience that only Hot Spring can deliver.





# VIGOR COLD PLUNGE

## Product Strategy

Elevate your edge and infuse vitality into every aspect of your life with the Vigor™ cold plunge by Hot Spring® Spas. Experience cold water immersion that revitalises your body, sharpens your focus, and elevates your mood. It's not just about feeling good – it's also about reducing inflammation, speeding recovery, and optimising your performance. By making cold plunging part of your wellness routine, you'll fuel your energy, strengthen your immune system, and build resilience. Harness the life-changing benefits of cold-water therapy, and step into a revitalised, stronger version of yourself—ready to take on any challenge.

## The Science of Cold Exposure

**Cold immersion provides powerful benefits for both mind and body.**

Regular exposure enhances stress resilience by training the nervous system to stay calm under pressure, which can help reduce baseline anxiety over time.

For athletes and active individuals, cold therapy reduces muscle soreness and inflammation by lowering tissue temperature and decreasing pro-inflammatory cytokines. This leads to faster recovery and less discomfort after intense activity.

With proven benefits in stress management, mood, and recovery, cold plunging is a simple yet effective way to enhance overall well-being.



## Colour Options

The Vigor Cold Plunge is designed to complement any space with a sleek, modern aesthetic. The acrylic shell is available in a crisp Alpine White, offering a clean and sophisticated look. For the exterior, the Everwood™ All-Weather Cabinet comes in two versatile finishes—Ash, a contemporary light grey, or Mocha, a rich, warm brown—allowing customers to choose a style that best fits their setting. Completing the design, the insulated WeatherPro™ cover is available in Grey or Storm, providing both protection and energy efficiency while seamlessly blending with the overall look.

### CABINETS\*

Everwood

### COVERS\*

WeatherPro



Ash



Grey



Mocha



Storm

\*Actual colours and products may vary from print representation.

## Seating

Designed for both comfort and functionality, the Vigor Cold Plunge features spacious, large-capacity seating that allows users to fully immerse themselves with ease. The contoured design is shaped to fit the body, providing a natural and supportive position for optimal comfort and recovery. An angled deck design ensures efficient water drainage, while the non-skid seating pad enhances both safety and comfort, creating a secure and enjoyable cold plunge experience.



## Filter

The Vigor Cold Plunge features a top-loading 2.3m<sup>2</sup> polyester filter, designed for efficient water filtration and easy maintenance. Cleaning is simple—just remove the filter and rinse it with a garden hose to keep the water fresh and clear. For optimal performance, the filter should be replaced once per year to ensure continued water quality and system efficiency.



Filter Lid



Filter

# VIGOR COLD PLUNGE

## Electrical Specifications

The Vigor™ Cold Plunge is designed for easy setup and reliable performance with a Mono Colour LCD Control Panel, providing intuitive operation and precise temperature control. It features a 4kW quiet variable speed compressor heat pump, ensuring efficient and consistent cooling.

Component	Specification
Control System	Mono Colour LCD Panel
Heater	4kW Quiet Variable Speed Compressor Heat Pump
Power Requirements	230 V / 13A, 50Hz

## Necessaries

### WHY WE DON'T RECOMMEND ACCESSORIES

We don't recommend accessories for the Vigor Cold Plunge for a few key reasons. The 74 cm height is similar to a standard bathtub, making it easy to enter and exit safely, so steps are unnecessary and could be a safety risk.

The cover weighs just 2.7 kg, making it easy to remove by hand, so no cover lifter is needed.

Additionally, bath salts or essential oils should not be added, as they can clog the filtration system and reduce its effectiveness.

By keeping it simple, the Vigor Cold Plunge provides a safe, efficient, and hassle-free cold therapy experience.





## Superior Insulation & Circulation for Maximum Efficiency

The Vigor Cold Plunge is engineered for exceptional cold retention and energy efficiency using advanced insulation and a continuous water circulation system. A multi-density, closed-cell polyurethane foam fill surrounds the shell, while fully insulated plumbing reduces external heat transfer, helping maintain a stable cold temperature with minimal energy use.

At the core of Vigor's performance is the SilentFlo 5000™ circulation pump—the same proven technology used in Hot Spring® spas. This Watkins Wellness® exclusive 40-watt design runs 24/7, quietly circulating and filtering over 19,000 litres of water per day. In a cold-water environment, continuous circulation plays a key role in maintaining a consistent cold temperature throughout the plunge. It also helps the system run more efficiently by reducing the workload on the heat pump.

Even in cold applications, the SilentFlo 5000 is designed for whisper-quiet, low-energy operation, using less power than a 40-watt light bulb. Its precise alignment with the flow rate of the system ensures optimised performance, clean water, and minimal energy consumption.

To support thermal retention, the Vigor comes with a custom-fit WeatherPro™ insulated cover featuring a tapered core and hinge seal, blocking out external heat. A sealed HDPE bottom helps prevent thermal gain and moisture buildup from below, contributing to long-term durability and performance.

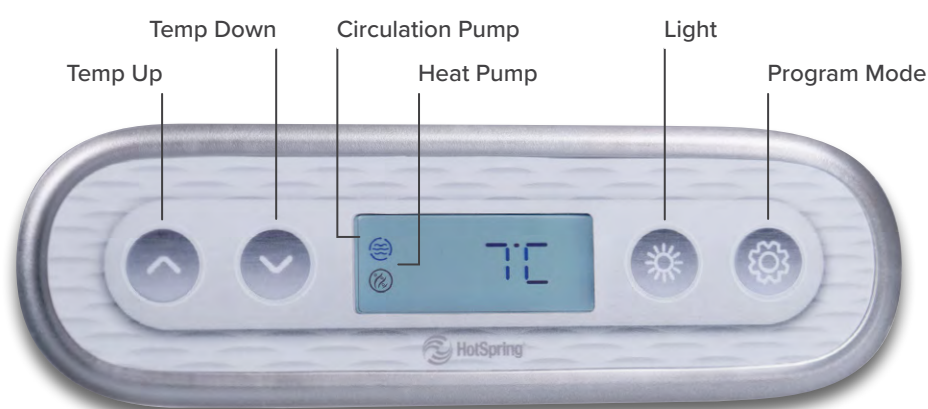


# VIGOR COLD PLUNGE

## Intuitive Control at Your Fingertips

The Mono Colour LCD Panel offers simple, user-friendly operation, allowing users to adjust and monitor their cold plunge experience with ease. Designed for clarity and convenience, the bright LCD screen provides clear temperature readings and responsive controls, ensuring precise adjustments for an optimal cold therapy session.

For added safety, the panel includes a child lock function, preventing unintended changes. Multi-colour LED lighting enhances the experience, allowing users to customise the ambiance to fit their mood. Built for durability and reliability, the weather-resistant panel is designed to withstand frequent use, providing effortless control at the touch of a button.



Message	Meaning	Action Required
	No message on display. Power has been cut off to the cold plunge.	The control panel will be disabled until power returns. Cold plunge settings will be preserved until next power up.
<b>F10</b>	No communication between the control panel and the control box.	Call your dealer or service provider.
<b>F11</b>	No communication between the control box and heat pump.	Call your dealer or service provider.
<b>E03</b>	Water flow failure.	Shut power off and back on (reset) several times if necessary. Clean your filter if dirty.
<b>E04—E44</b>	Error codes that require service.	Power down for 5 minutes and power back up. If this doesn't work, call your dealer or service provider.
<b>E20</b>	Error code that indicates the ambient temperature is too hot (above 38°C)	Wait until ambient temperature is below 38°C then shut power off and back on (reset).

**⚠ WARNING! SHOCK HAZARD! NO USER SERVICEABLE PARTS.**

Do not attempt service of the control box. Contact your local dealer for assistance. Follow all owner manual power connection instructions.

## Easy Water Care & Maintenance

During the initial setup of the Vigor™ Cold Plunge, it's important to test and balance the water chemistry by adjusting total alkalinity, pH, and calcium hardness using the recommended chemicals. (See owners manual) This step ensures the water is properly conditioned to protect the system and provide a clean, safe environment. Once balanced, ongoing maintenance is simple, requiring only regular chlorine use to keep the water clean and sanitised.

The SilentFlo 5000™ 24-hour circulation pump ensures continuous water movement to prevent stagnation and support water clarity. The 2.3 square metres. filter captures debris efficiently, while the UV-C Sanitisation System provides powerful, chemical-free disinfection by neutralising bacteria. For hassle-free water changes, the built-in-floor drain allows for quick, efficient draining when needed.

With advanced systems and a straightforward care routine, the Vigor Cold Plunge offers crystal-clear, refreshing water with minimal effort—so users can focus on the benefits of cold therapy, not maintenance.

Chemical	Purpose	When to Use
<b>Alkalinity Up</b>	Raises total alkalinity	If TA is below 40 PPM
<b>Alkalinity Down</b>	Lowers total alkalinity	If TA is above 120 PPM
<b>pH Up</b>	Raises pH level	If pH is below 7.2
<b>pH Down</b>	Lowers pH level	If pH is above 7.8
<b>Calcium Increaser</b>	Raises calcium hardness	If calcium is below 75 PPM
<b>Stain &amp; Scale Control</b>	Helps manage high calcium	If calcium is above 150 PPM
<b>Sodium Dichlor</b>	Sanitises water (preferred sanitiser)	Weekly and before/after each use
<b>Granular Bromine</b>	Alternative sanitiser (if not using chlorine)	Weekly and before/after each use

## Warranty Coverage

The Vigor™ Cold Plunge is backed by a comprehensive warranty, giving owners peace of mind with coverage on key components and materials. Below is a quick overview of what's included:

Coverage Area	Warranty Term	Details
<b>Shell &amp; Surface</b>	5 Years	Covers water loss and surface defects in the acrylic shell.
<b>Plumbing</b>	3 Years	Covers leaks from fittings, joints, drains, and bonded parts.
<b>Components</b>	3 Years	Covers electrical components, valves, and the circulation pump.
<b>Heat Pump</b>	3 Years	Covers defects in materials and workmanship.
<b>Cabinet</b>	3 Years	Covers structural integrity. Cosmetic finish covered only at delivery.
<b>LED Lighting</b>	2 Years	Covers factory-installed underwater lighting components.
<b>UV Water Sanitation System</b>	2 Years	Covers housing, tubing, and electrical components (UV-C lamp excluded).

Please note that minor parts such as filter cartridges are not covered under the warranty. Check with your local dealer for more information. With this robust coverage, the Vigor Cold Plunge is built to deliver years of reliable performance.



# PRODUCT SPECIFICATIONS

## 50Hz Models

Collection	Model	Seats	Jets	Length	Width	Height	Dry Weight	Water Capacity	Filled Weight	Electrical Requirements
Highlife	Grandee™	7	49	254 cm	231 cm	97 cm	360 kg	1,725 l	2,645 kg	230V/20A
	Envoy™	5	55	254 cm	231 cm	97 cm	355 kg	1,725 l	2,480 kg	230V/20A
	Aria™	5	42	221 cm	221 cm	91 cm	310 kg	1,400 l	2,110 kg	230V/20A
	Vanguard™	6	42	221 cm	221 cm	91 cm	320 kg	1,425 l	2,225 kg	230V/20A
	Sovereign™	5	32	203 cm	236 cm	84 cm	270 kg	1,250 l	1,920 kg	230V/16A
	Prodigy™	5	28	213 cm	198 cm	84 cm	260 kg	1,025 l	1,685 kg	230V/16A
	Jetsetter™ LX	3	30	213 cm	173 cm	84 cm	235 kg	950 l	1,425 kg	230V/16A
	Jetsetter™	3	22	213 cm	173 cm	84 cm	225 kg	925 l	1,390 kg	230V/16A
Limelight	Prism™	7	73	279 cm	231cm	97 cm	540 kg	1,990 l	3,085 kg	230V/16A + 25A
	Pulse®	7	49	226 cm	226 cm	97 cm	460 kg	1,685 l	2,700 kg	230V/20A
	Flair®	6	43	213 cm	213 cm	91 cm	400 kg	1,270 l	2,140 kg	230V/16A
	Flash™	7	41	213 cm	213 cm	91 cm	385 kg	1,365 l	2,300 kg	230V/16A
	Beam™	4	19	203 cm	203 cm	84 cm	320 kg	1,115 l	1,750 kg	230V/16A
	Strobe™	4	23	208 cm	196 cm	84 cm	375 kg	1,020 l	1,715 kg	230V/16A
Hot Spot	Rhythm™	7	40	213 cm	213 cm	91 cm	383 kg	1,250 l	2,185 kg	230V/20A
	Relay™	6	40	213 cm	213 cm	91 cm	375 kg	1,290 l	2,140 kg	230V/20A
	Propel™	5	24	208 cm	208 cm	84 cm	350 kg	1,135 l	1,880 kg	230V/16A
	Stride™	3	20	213 cm	165 cm	74 cm	260kg	850 l	1,350 kg	230V/16A
	SX	3	18	183 cm	196 cm	84 cm	295 kg	870 l	1,400 kg	230V/16A
	TX	2	11	183 cm	183 cm	74 cm	290 kg	720 l	1,165 kg	230V/16A
Cold Plunge	Vigor™	1	—	224 cm	107 cm	74 cm	165 kg	425 l	670 kg	230V/13A

# VIDEO LINKS

## Product Training Video Links

Scan each QR Code with your smartphone or smart pad camera to access valuable Hot Spring Spas product information.



### HSS QUICK BITS VIDEO LIBRARY

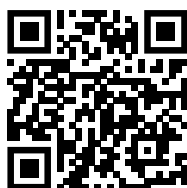
<https://vimeo.com/showcase/hss-quickbits>

Password: quickbits



### HIGHLIFE COLLECTION INTRODUCTION

<https://vimeo.com/742019990/b48b7a7ef7>



### 100% NO-BYPASS FILTRATION TRAINING

<https://m.youtube.com/watch?v=aV1p8XBp3No>



### FRESHWATER SALT SYSTEM STARTUP INSTRUCTIONS

<https://www.youtube.com/watch?v=4g2Vmu1uSdw>

## Take the Quiz!

Click the title or scan the QR Code with your smartphone or smart pad camera to take the quiz.



[CLICK TO TEST YOUR PRODUCT KNOWLEDGE](#)

## NOTES



**RM-SPAS**  
Chemin des Rottes 27  
1907 Saxon / Valais  
E. [info@rm-spas.ch](mailto:info@rm-spas.ch)  
T. +41 27 746 64 00



**HotSpring®**  
*Every day made better®*

©2025 WATKINS WELLNESS All Rights Reserved. Highlife, Hot Spring, Moto-Massage DX, FootWell, Grandee, Envoy, Vanguard, Aria, Sovereign, Prodigy, Jetsetter, Jet-Cluster, SmartJet, Comfort Control, No-Fault, IQ 2020, Wavemaster, Silent Flo-5000, SoothingStream, JetStream, Precision, Everwood, CoverCradle, UpRite, Lift 'n Glide, Clean Screen, Vanishing Act, FreshWater, FreshWater AG+, Tri-X, HydroStream, Luminescence, BellaFontana, are trademarks of WATKINS WELLNESS.