

HIGHLIFE® COLLECTION

JETSETTER™ LX



FreshWater® IQ
System Ready



100% Filtration
SilentFlo Circulation



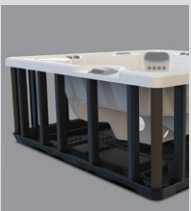
Moto-Massage® DX



Super Energy
Efficient



Colour LCD
Touchscreen



Polymer Substructure
& Base Pan



Shown with Alpine White Shell and
Charcoal Cabinet

| | | | |
|---------------|----------------|-------------|----------------|
| People | Seating | Jets | Voltage |
| 3 Seats | Lounge | 30 Jets | 230 V |

Size
213 × 173 × 84 cm

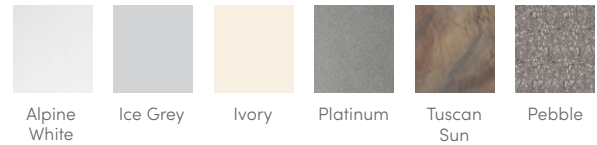
Water Care
FreshWater® Salt System Included

HIGHLIFE® COLLECTION

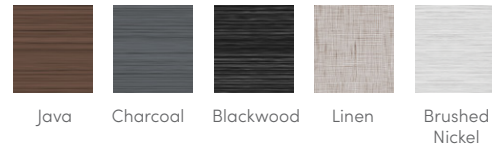
JETSETTER™ LX



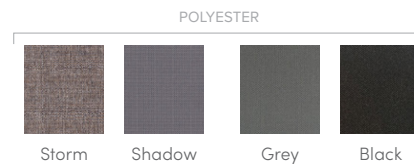
SHELL COLOURS



CABINET COLOURS



COVER COLOURS



CABINET AND SHELL COLOUR OPTIONS*

| Cabinet Colours | Java | Charcoal | Blackwood | Linen | Brushed Nickel |
|-----------------|---|--|--------------------------------------|---|--------------------------------------|
| Shell Colours | Alpine White Ice Grey Ivory Tuscan Sun Pebble | Alpine White Ice Grey Platinum Tuscan Sun Pebble | Alpine White Ice Grey Platinum | Alpine White Ivory Tuscan Sun Pebble | Alpine White Ice Grey Platinum |

LEGENDARY MASSAGE

- 30 Personalised-Control Jets**
- Moto-Massage® Lounge
 - Soothing Stream™ Seat
 - Precision™ Jet Seat

EASY WATER CARE

| | |
|--------------------------|---|
| Water Care System | FreshWater® Salt System Included, Smart Monitoring System Optional |
| Filtration System | 100% No-bypass Filtration, Exclusive, High-flow Tri-X® Filters, 18 m² Filtration Area |

LEADING ENERGY EFFICIENCY

| | |
|-------------------------|---|
| Jet Pump | WaveMaster® 9000; One-speed, 2.5 HP Continuous Duty, 5.2 HP Breakdown Torque |
| Circulation Pump | SilentFlo 5000™ for quiet, continuous filtration |
| Heater | No-Fault® 1,500 W / 230 V |
| Insulation | Multiple Layers of Foam Insulation; Certified to California Energy Commission (CEC) and APSP 14 energy efficiency standards for portable spas |
| Cover | WeatherPro™ 10 cm Tapered Custom-Fit with Hinge Seal |

SIZE

| | |
|-------------------|-------------------|
| Dimensions | 213 × 173 × 84 cm |
|-------------------|-------------------|

CAPACITY

| | |
|-------------------------|-------------------------------|
| Seating Capacity | 3 seats with lounge |
| Water Capacity | 950 litres |
| Weight | 235 kg dry; 1,425 kg filled** |

ADDITIONAL FEATURES

| | |
|-----------------------------|---|
| Smart Spa Technology | Hot Spring Spas App, Powered by the Connected Spa Kit |
| Cover Lifters | CoverCradle™, CoverCradle II, Lift 'n Glide™, or UpRite™ (F/B only) |
| Steps | Steps are available to match cabinet colours |
| Entertainment | Bluetooth® Wireless Sound System (Optional) |
| Control System | IQ 2020™ with Colour LCD Touchscreen, 230 V / 16 amp, 50 Hz |
| Lighting System | Luminescence™ multi-colour four-zone |

*No special orders or shell substitutions available. Actual colours and products may vary from print representation. See dealer to verify.
**Includes water and 3 adults weighing 80 kg each.