

HIGHLIFE® COLLECTION

# JETSETTER™



FreshWater® IQ  
System Ready



100% Filtration  
SilentFlo Circulation



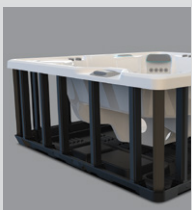
Moto-Massage® DX



Super Energy  
Efficient



Colour LCD  
Touchscreen



Polymer Substruc-  
ture & Base Pan



*Shown with Alpine White Shell  
and Blackwood Cabinet*

<b>People</b>	<b>Seating</b>	<b>Jets</b>	<b>Voltage</b>
3 Seats	Lounge	22 Jets	230 V

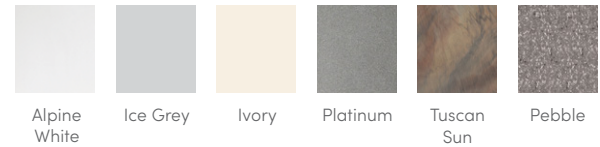
**Size**  
213 × 173 × 84 cm

**Water Care**  
FreshWater® Salt System Included

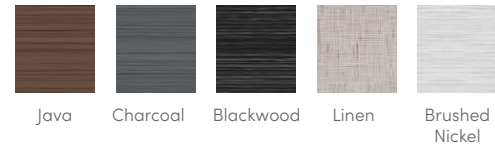
# HIGHLIFE® COLLECTION JETSETTER™



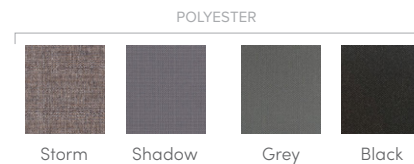
## SHELL COLOURS



## CABINET COLOURS



## COVER COLOURS



## CABINET AND SHELL COLOUR OPTIONS\*

Cabinet Colours	Java	Charcoal	Blackwood	Linen	Brushed Nickel
Shell Colours	Alpine White Ice Grey Ivory Tuscan Sun Pebble	Alpine White Ice Grey Platinum Tuscan Sun Pebble	Alpine White Ice Grey Platinum	Alpine White Ivory Tuscan Sun Pebble	Alpine White Ice Grey Platinum

## LEGENDARY MASSAGE

- 22 Personalised-Control Jets**
- Moto-Massage® Lounge
  - Soothing Stream™ Seat
  - Precision™ Jet Seat

## EASY WATER CARE

<b>Water Care System</b>	FreshWater® Salt System Included, Smart Monitoring System Optional
<b>Filtration System</b>	100% No-bypass Filtration, Exclusive, High-flow Tri-X® Filters, 18 m² Filtration Area

## LEADING ENERGY EFFICIENCY

<b>Jet Pump</b>	WaveMaster® 9000; One-speed, 2.5 HP Continuous Duty, 5.2 HP Breakdown Torque
<b>Circulation Pump</b>	SilentFlo 5000™ for quiet, continuous filtration
<b>Heater</b>	No-Fault® 1,500 W / 230 V
<b>Insulation</b>	Multiple Layers of Foam Insulation; Certified to California Energy Commission (CEC) and APSP 14 energy efficiency standards for portable spas
<b>Cover</b>	WeatherPro™ 10 cm Tapered Custom-Fit with Hinge Seal

## SIZE

<b>Dimensions</b>	213 × 173 × 84 cm
-------------------	-------------------

## CAPACITY

<b>Seating Capacity</b>	3 seats with lounge
<b>Water Capacity</b>	925 litres
<b>Weight</b>	225 kg dry; 1,390 kg filled**

## ADDITIONAL FEATURES

<b>Smart Spa Technology</b>	Hot Spring Spas App, Powered by the Connected Spa Kit
<b>Cover Lifters</b>	CoverCradle®, CoverCradle II, Lift 'n Glide®, or UpRite® (F/B only)
<b>Steps</b>	Steps are available to match cabinet colours
<b>Entertainment</b>	Bluetooth® Wireless Sound System (Optional)
<b>Control System</b>	IQ 2020™ with Colour LCD Touchscreen, 230 V / 16 amp, 50 Hz
<b>Lighting System</b>	Luminescence™ multi-colour four-zone

\*No special orders or shell substitutions available. Actual colours and products may vary from print representation. See dealer to verify.  
\*\*Includes water and 3 adults weighing 80 kg each.

