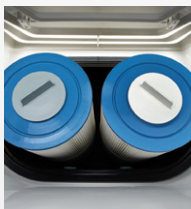




FreshWater® IQ  
System Ready



Dual Action Filtration  
SilentFlo Circulation



FiberCor®  
High-Density Insulation



Colour LCD Display

## LIMELIGHT® COLLECTION

# BEAM™



*Shown with Alpine White Shell  
and Sable Cabinet*

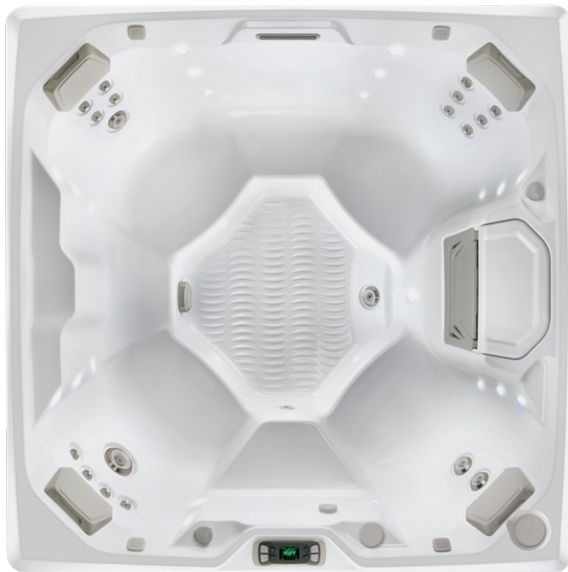
People	Seating	Jets	Voltage
4 Seats	Open	19 Jets	230 V

**Size**  
203 × 203 × 84 cm

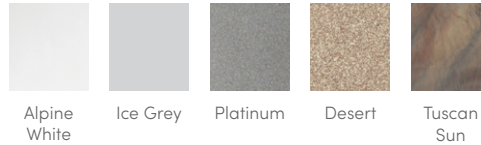
**Water Care**  
FreshWater® Salt System Ready

# LIMELIGHT® COLLECTION

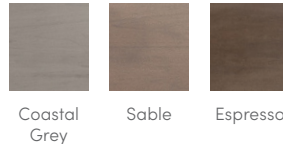
# BEAM™



## SHELL COLOURS\*



## CABINET COLOURS\*



## COVER COLOURS

POLYESTER



Storm

## LEGENDARY MESSAGE

- 19 Personalised-Control Jets**
- 1 XL Dual Rotary jet
  - 2 Standard Single Rotary jets
  - 2 Standard Directional jets
  - 14 Directional Precision™ jets

## EASY WATER CARE

**Water Care System** FreshWater® Salt System Ready, Smart Monitoring System Optional

**Filtration System** Dual action, 9.3 m², top loading

## LEADING ENERGY EFFICIENCY

**Jet Pump 1** WaveMaster® 9000; One-speed, 2.5 HP Continuous Duty, 5.2 HP Breakdown Torque

**Circulation Pump** SilentFlo 5000™ for quiet, continuous filtration

**Heater** No-Fault® 1,500 W / 230 V

**Insulation** FiberCor® Insulation; Certified to Californias Energy Commission (CEC) and APSP 14 energy efficiency standards for portable spas

**Cover** WeatherPro™ 10 cm Tapered Custom-Fit with Hinge Seal

## SIZE

**Dimensions** 203 × 203 × 84 cm

## CAPACITY

<b>Seating Capacity</b>	4 seats
<b>Water Capacity</b>	1,115 litres
<b>Weight</b>	320 kg dry; 1,750 kg filled**

## ADDITIONAL FEATURES

<b>Smart Spa Technology</b>	Hot Spring Spas App, Powered by the Connected Spa Kit
<b>Water Feature</b>	Vidro™ backlit ribbon waterfall
<b>Cover Lifters</b>	CoverCradle™, CoverCradle II, Lift 'n Glide™, or UpRite™
<b>Steps</b>	Limelight Collection Step (Coastal Grey, Espresso, and Sable), Polymer Step (Ash)
<b>Entertainment</b>	Bluetooth® Wireless Sound System (Optional)
<b>Control System</b>	IQ 2020™ with LCD control panel 230 V / 16 amp, 50 Hz
<b>Lighting System</b>	Raio™ multi-colour interior points of light Exterior multi-colour lighting with timer

\*Actual colours and products may vary from print representation. See dealer to verify.

\*\*Includes water and 4 adults weighing 80 kg each.

